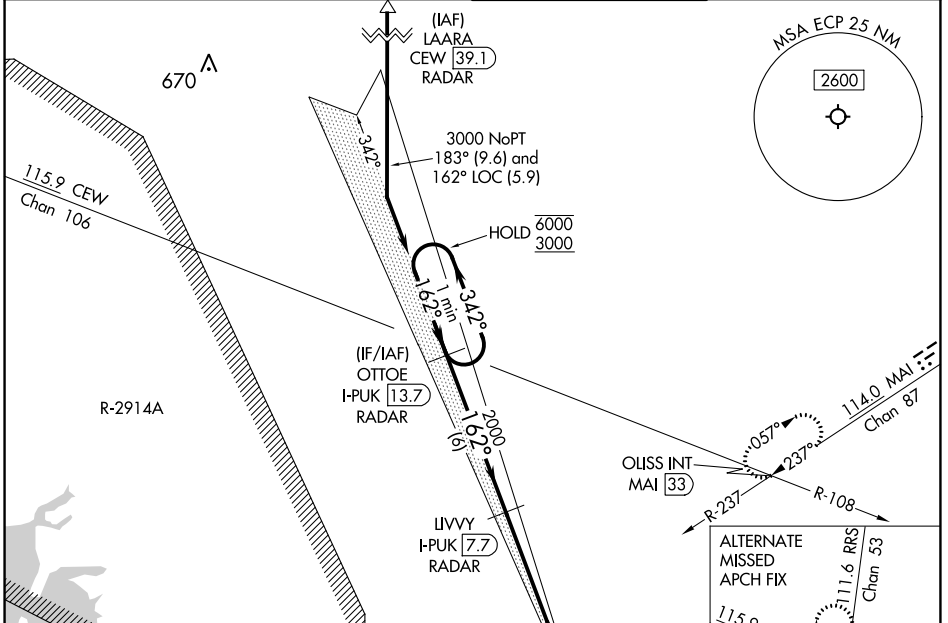


LOC/DME I-PUK <b>111.15</b> Chan 48 (Y)	APP CRS <b>162°</b>	Rwy Idg TDZE Apt Elev	<b>10000</b> <b>69</b> <b>69</b>
---	------------------------	-----------------------------	--

# ILS RWY 16 (SA CAT I & II)

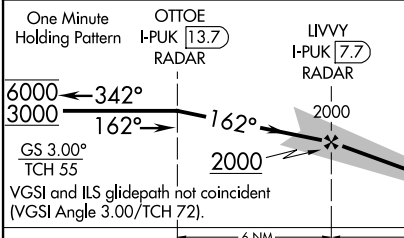
NORTHWEST FLORIDA BEACHES INTL (ECP)

DME required for procedure entry. DME required.		MALS R	MISSED APPROACH: Climb to 600 then climbing left turn to 4000 on heading 025° and on MAI VORTAC R-237 to OUISS INT/MAI 33 DME and hold, continue climb-in-hold to 4000.
<p>SA CAT I: Requires specific OPSPEC, MSPEC, or LOA approval and use of HUD to DH.</p> <p>SA CAT II: Reduced lighting: requires specific OPSPEC, MSPEC, or LOA approval and use of autoland or HUD to touchdown.</p>			
ATIS <b>119.975</b>	TYNDALL APP CON* <b>125.2</b> (N above 5000')	PANAMA CITY TOWER* <b>118.95</b> (CTAF) <b>0</b>	GND CON <b>121.65</b>



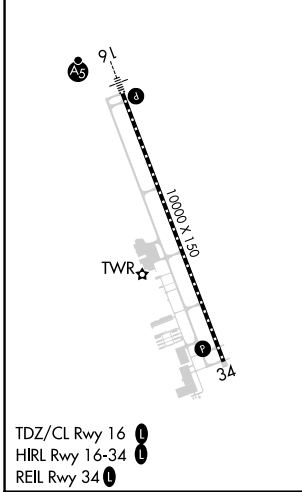
ELEV 69	TDZE 69
---------	---------

LOCALIZER 111.15 I-PUK Chan 48 (Y)



ALTERNATE MISSED APCH FIX

115.9 CEW Chan 106, OUISS INT RRS [49.3], R-108, R-192, R-111.6 RRS Chan 53, hdg 025°, MAI R-237, OUISS INT.



CATEGORY	A	B	C	D
S-ILS 16	SA CAT I RA 151/14 150 DA 219			
S-ILS 16	SA CAT II RA 101/12 100 DA 169			

**SA CATEGORY I & II ILS - SPECIAL AIRCREW & AIRCRAFT CERTIFICATION REQUIRED**

SE-3, 11 JUL 2024 to 08 AUG 2024

SE-3, 11 JUL 2024 to 08 AUG 2024