

WAAS CH 63017 W16A	APP CRS 162°	Rwy Idg 10000 TDZE 69 Apt Elev 69
--	------------------------	--

RNAV (GPS) RWY 16

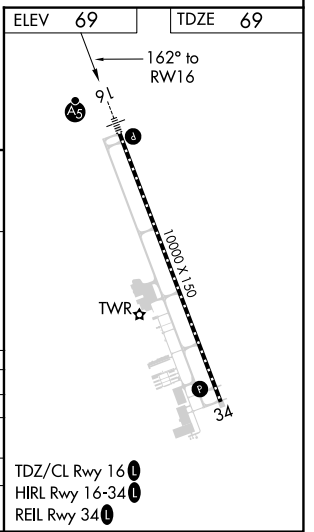
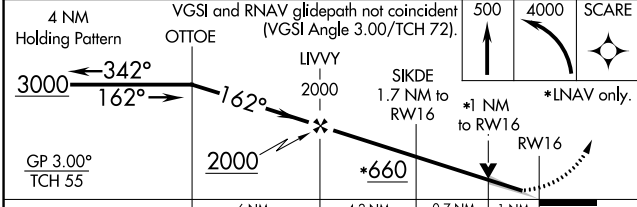
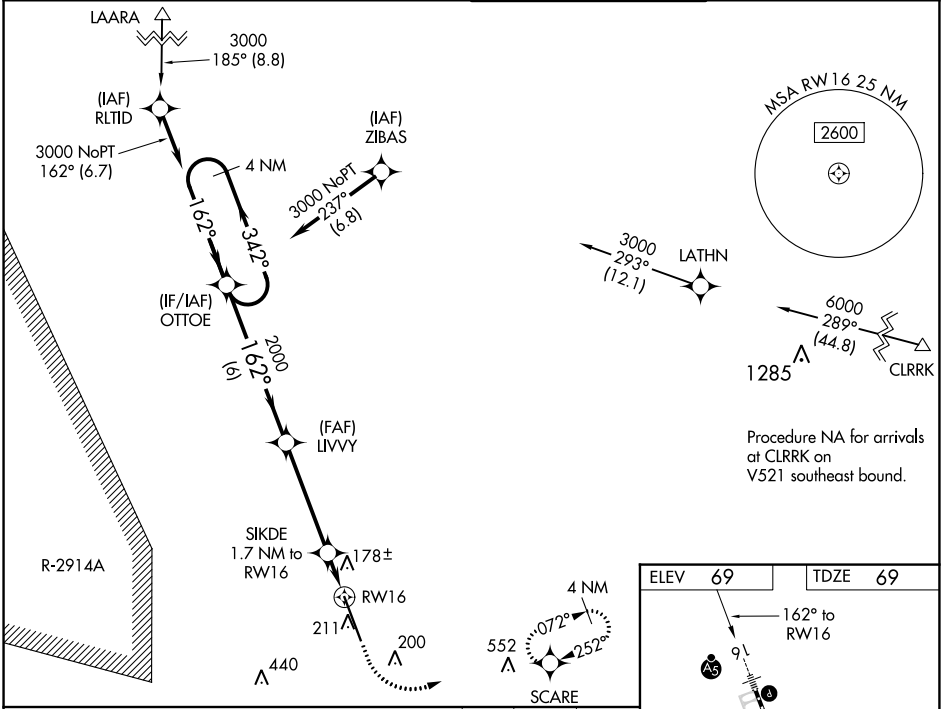
NORTHWEST FLORIDA BEACHES INTL (ECP)

⚠ For uncompensated Baro-VNAV systems, LNAV/VNAV NA below -15°C (5°F) or above 54°C (130°F). DME/DME RNP-0.3 NA. When local altimeter setting not received, use Destin altimeter setting and increase all DA 88 feet, increase all MDA 100 feet, and increase LNAV/VNAV all Cats visibility and LNAV Cat C and D visibility 3/8 mile. Baro-VNAV and VDP NA when using Destin altimeter setting. For inop MALSR, increase LNAV Cat C and D visibility to 1 mile. For inop MALSR when using Destin altimeter setting, increase all LPV visibility to 7/8 mile, increase all LNAV/VNAV visibility to 1 3/8 mile, and increase LNAV Cat C and D visibility to 1 3/8 mile.

MALSR

MISSED APPROACH: Climb to 500 then climbing left turn to 4000 direct SCARE and hold, continue climb-in-hold to 4000.

ATIS 119.975	TYNDALL APP CON* 125.2 (N above 5000')	PANAMA CITY TOWER* 118.95 (CTAF) 0	GND CON 121.65
------------------------	--	---	--------------------------



CATEGORY	A	B	C	D
LPV DA		269-1/2	200 (200-1/2)	
LNAV/VNAV DA		478-7/8	409 (500-7/8)	
LNAV MDA	440-1/2	371 (400-1/2)	440-5/8	371 (400-5/8)
C CIRCLING	520-1	451 (500-1)	520-1 1/2	620-2
			451 (500-1 1/2)	551 (600-2)

TDZ/CL Rwy 16 **0**
HIRL Rwy 16-34 **0**
REIL Rwy 34 **0**

SE-3, 11 JUL 2024 to 08 AUG 2024

SE-3, 11 JUL 2024 to 08 AUG 2024