

WAAS CH 69531 W27A	APP CRS 276°	Rwy Idg TDZE Apt Elev	4403 2036 2037
--	------------------------	-----------------------------	---

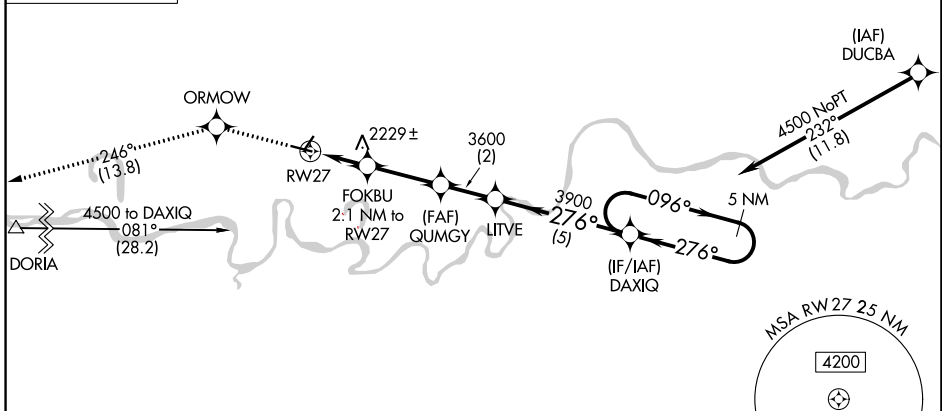
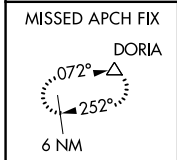
RNAV (GPS) RWY 27

POPLAR MUNI (PO1)

⚠️ NA For uncompensated Baro-VNAV systems, LNAV/VNAV NA below -19°C (-2°F) or above 54°C (130°F). DME/DME RNP -0.3 NA. When local altimeter setting not received, use Wolf Point altimeter setting: increase LPV DA to 2332, LNAV/VNAV DA to 2582 and all Cats visibility ¼ SM; increase all MDAs 60 feet and Circling Cat C/D visibility ¼ SM. Baro-VNAV and VDP NA with Wolf Point altimeter setting. Helicopter visibility reduction below 1 SM not authorized. Circling NA to Rwy 2/20.

MISSED APPROACH: Climb to 6000 direct ORMOW and on track 246° to DORIA and hold, continue climb-in-hold to 6000.

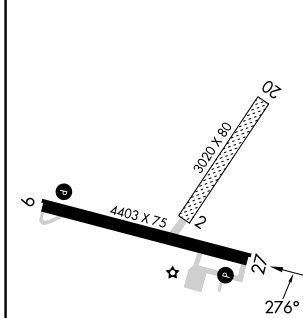
AWOS-3PT 135.325	SALT LAKE CITY CENTER 126.85 305.2	UNICOM 122.8 (CTAF) ①
----------------------------	--	---------------------------------



NW-1, 11 JUL 2024 to 08 AUG 2024

NW-1, 11 JUL 2024 to 08 AUG 2024

ELEV 2037	TDZE 2036
-----------	-----------



MIRL Rwy 9-27 ①	6000	ORMOW	tr 246°	DORIA	VGSI and RNAV glidepath not coincident (VGSI Angle 3.00°/TCH 24).	5 NM Holding Pattern	
	*LNAV only		FOKBU 2.1 NM to RWY 27	QUMGY	LITVE	DAXIQ	
	*1.3 NM to RWY 27		*2740	3600	3900	276°	096°
	1.3 NM		0.8	2.7 NM	2 NM	5 NM	GP 3.00° TCH 40
	CATEGORY	A		B		C	D
LPV DA	2286-1		250 (300-1)				
LNAV/VNAV DA	2536-1¾		500 (500-1¾)				
LNAV MDA	2480-1		444 (500-1)		2480-1⅜ 444 (500-1⅜)		
CIRCLING	2560-1		2600-1		2600-1½		
	523 (600-1)		563 (600-1)		563 (600-1½)		
		2740-2¼		703 (800-2¼)			