

TAKOTNA, ALASKA

RNAV (GPS) RWY 35

APCH CRS	Rwy Idg	3820
350°	TDZE	925
	Arprt Elev	933

[USAF]

TATALINA LRSS (PATL)

RNP APCH

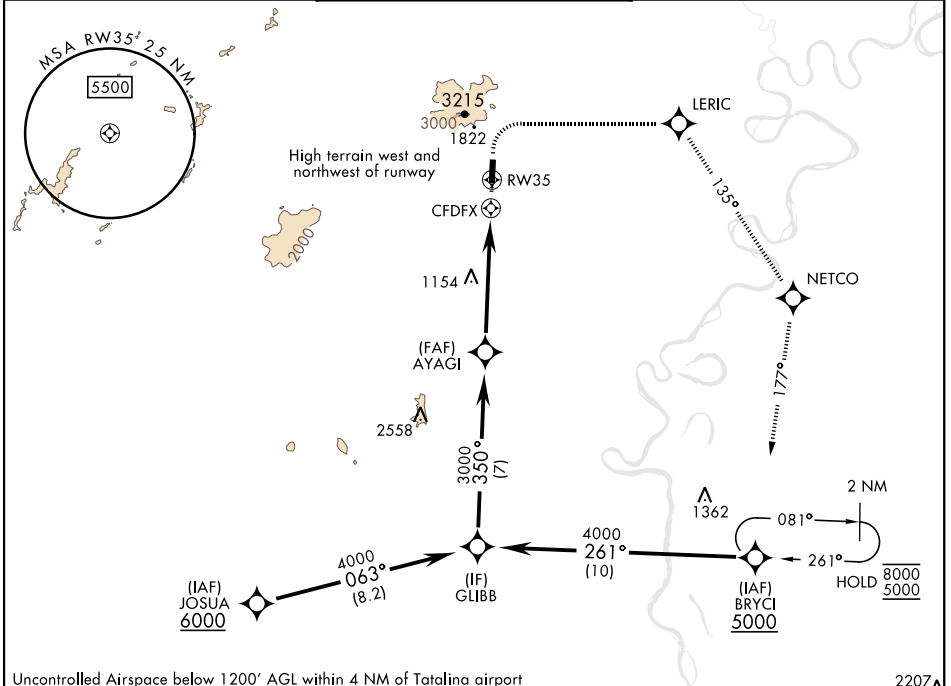
▼ Circling not authorized to Rwy 17. Night Operations not authorized.

MISSED APPROACH: (Do not exceed 165 KIAS until initial turn completion). Climb to 1500 then climbing right turn to 5000 direct LERIC, track 135° to NETCO, track 177° to BRYCI and hold.

KENAI RADIO
122.3

UNICOM
126.2 (CTAF) 364.2

AWOS-3



AK, 11 JUL 2024 to 05 SEP 2024

AK, 11 JUL 2024 to 05 SEP 2024

Uncontrolled Airspace below 1200' AGL within 4 NM of Tatalina airport

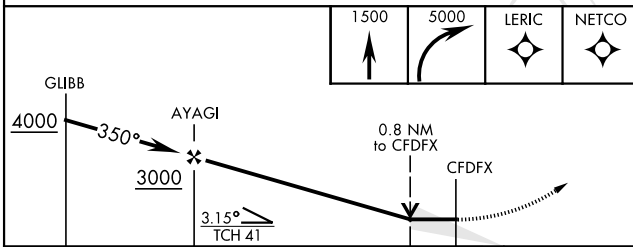
2207 A

NOT FOR CIVIL USE

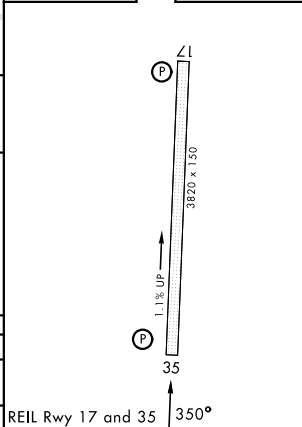
EMERG SAFE ALT 100 NM 12,000

MILITARY CERTIFIED AIRCREWS OR AUTHORIZED CONTRACT AIRCRAFT ONLY

ELEV 933	TDZE 925
----------	----------



CATEGORY	A	B	C	D
RNAV MDA	1500-1¼	575 (600-1¼)	1520-1¾ 595 (600-1¾)	NOT AUTHORIZED
CIRCLING	NOT AUTHORIZED			



TAKOTNA, ALASKA
Amdt 3 30NOV23

62° 54'N-155° 59'W

TATALINA LRSS (PATL)

RNAV (GPS) RWY 35