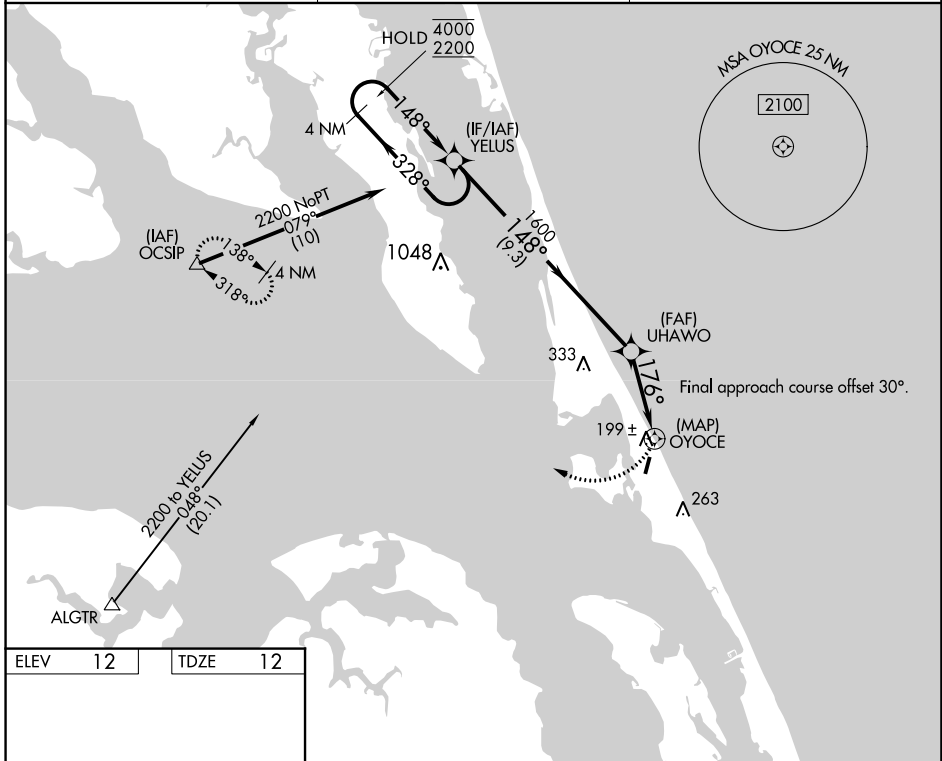


WAAS CH 50240 W21A	APP CRS 176°	Rwy Idg TDZE Apt Elev	3000 12 12
--	------------------------	-----------------------------	---------------------------------------

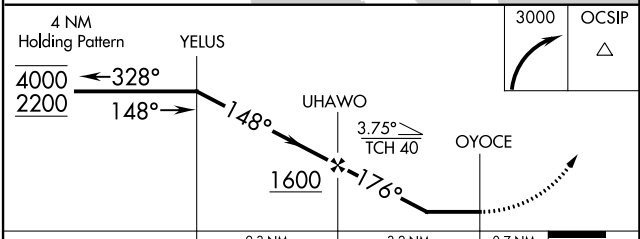
RNAV (GPS) RWY 21

FIRST FLIGHT (FFA)

RNP APCH - GPS.		MISSED APPROACH: Climbing right turn to 3000 direct OCSIP and hold.
<p>▼ Rwy 21 helicopter visibility reduction below 1 SM NA. ▲ Procedure NA at night.</p>		
AWOS-3 118.075	CHERRY POINT APP CON 124.725 350.35	CTAF 122.9



ELEV 12	TDZE 12



CATEGORY	A	B	C	D
LP MDA	460-1	448 (500-1)	NA	
LNAV MDA	500-1	488 (500-1)	NA	
<input checked="" type="checkbox"/> CIRCLING	520-1 508 (600-1)	540-1 528 (600-1)	NA	

SE-2, 11 JUL 2024 to 08 AUG 2024

SE-2, 11 JUL 2024 to 08 AUG 2024