

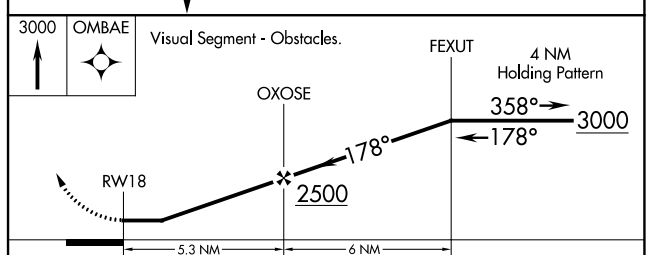
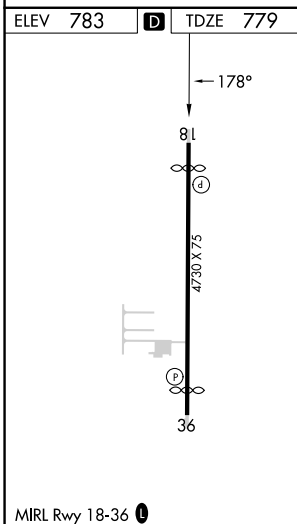
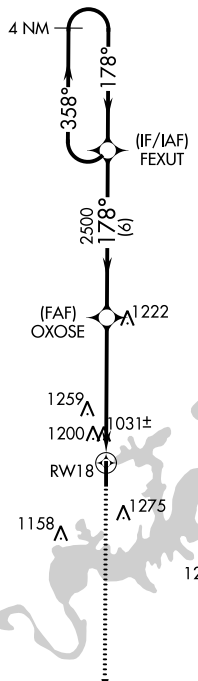
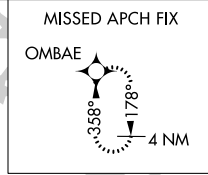
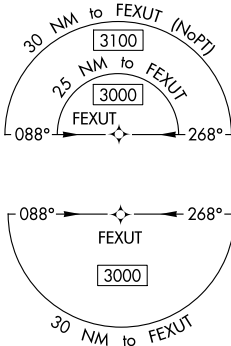
WAAS CH 81840 W18A	APP CRS 178°	Rwy Idg TDZE Apt Elev	4228 779 783
--	------------------------	-----------------------------	---

RNAV (GPS) RWY 18

SOUTH GRAND LAKE RGNL (1K8)

RNP APCH - GPS.		MISSED APPROACH: Climb to 3000 direct OMBAE and hold.
<p>NA Rwy 18 helicopter visibility reduction below 1 SM NA. Use South Grand Lake Rgnl altimeter setting; when not received, use Grove altimeter setting. Straight-in Rwy 18 NA at night, Circling Rwy 18 NA at night.</p>		

AWOS-3PT 118,15	KANSAS CITY CENTER 128,6 282,325	CTAF 122,9
---------------------------	--	----------------------



CATEGORY	A	B	C	D
LP MDA	1320-1	541 (600-1)	1320-1½ 541 (600-1½)	NA
LNAV MDA	1500-1	721 (800-1)	1500-2 721 (800-2)	NA
C CIRCLING	1540-1 757 (800-1)	1620-1¼ 837 (900-1¼)	1620-2½ 837 (900-2½)	NA

SC-1, 11 JUL 2024 to 08 AUG 2024

SC-1, 11 JUL 2024 to 08 AUG 2024