

WAAS CH 69239 W36A	APP CRS 358°	Rwy ldg 4238 TDZE 779 Apt Elev 783
--	------------------------	---

RNAV (GPS) RWY 36

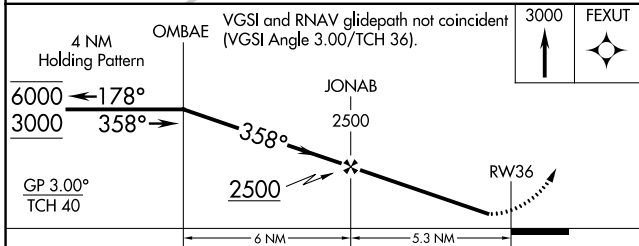
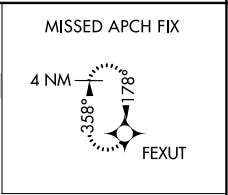
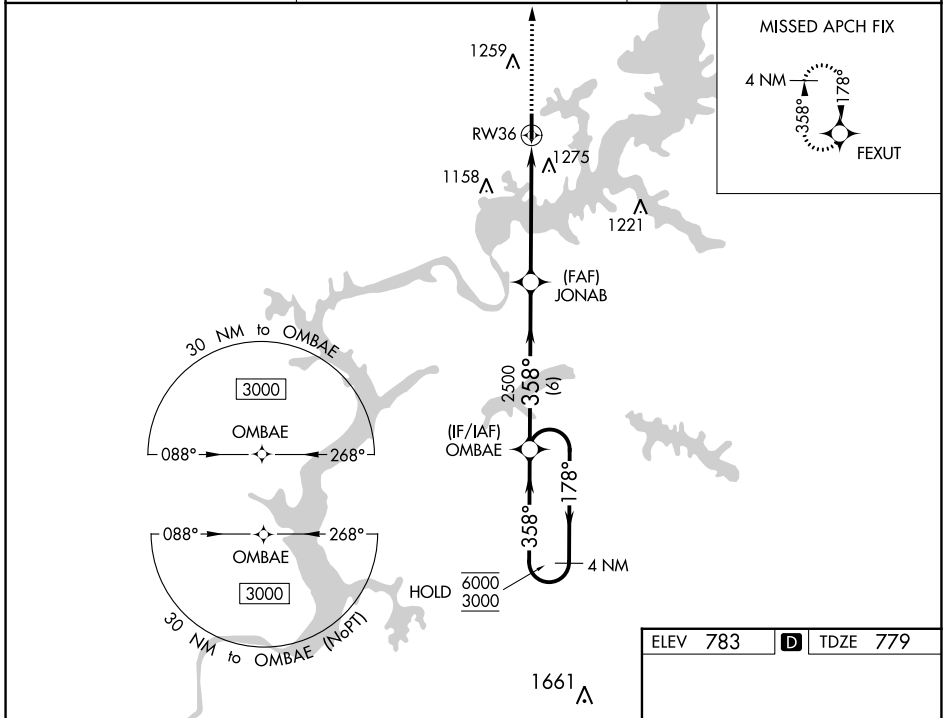
SOUTH GRAND LAKE RGNL (1K8)

RNP APCH - GPS.

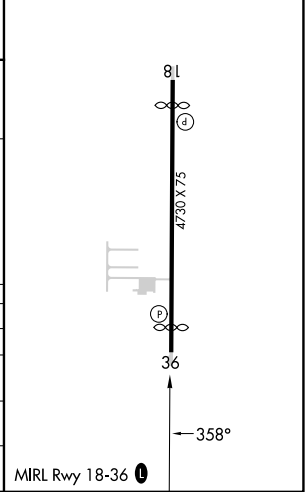
⚠ Circling to Rwy 18 NA at night. Rwy 36 helicopter visibility reduction below $\frac{3}{4}$ SM NA. Baro-VNAV NA. Use South Grand Lake Rgnl altimeter setting; when not received, use Grove altimeter setting.

⚠ MISSED APPROACH: Climb to 3000 direct FEXUT and hold.

AWOS-3PT 118,15	KANSAS CITY CENTER 128,6 282,325	CTAF 122,9
---------------------------	--	----------------------



ELEV 783	D TDZE 779
----------	-------------------



CATEGORY	A	B	C	D
LPV DA	1068-1 289 (300-1)			NA
LNAV/VNAV DA	1635-2½ 856 (900-2½)			NA
LNAV MDA	1540-1 761 (800-1)	1540-1¼ 761 (800-1¼)	1540-2½ 761 (800-2½)	NA
C CIRCLING	1540-1 757 (800-1)	1620-1¼ 837 (900-1¼)	1620-2½ 837 (900-2½)	NA

SC-1, 11 JUL 2024 to 08 AUG 2024

SC-1, 11 JUL 2024 to 08 AUG 2024