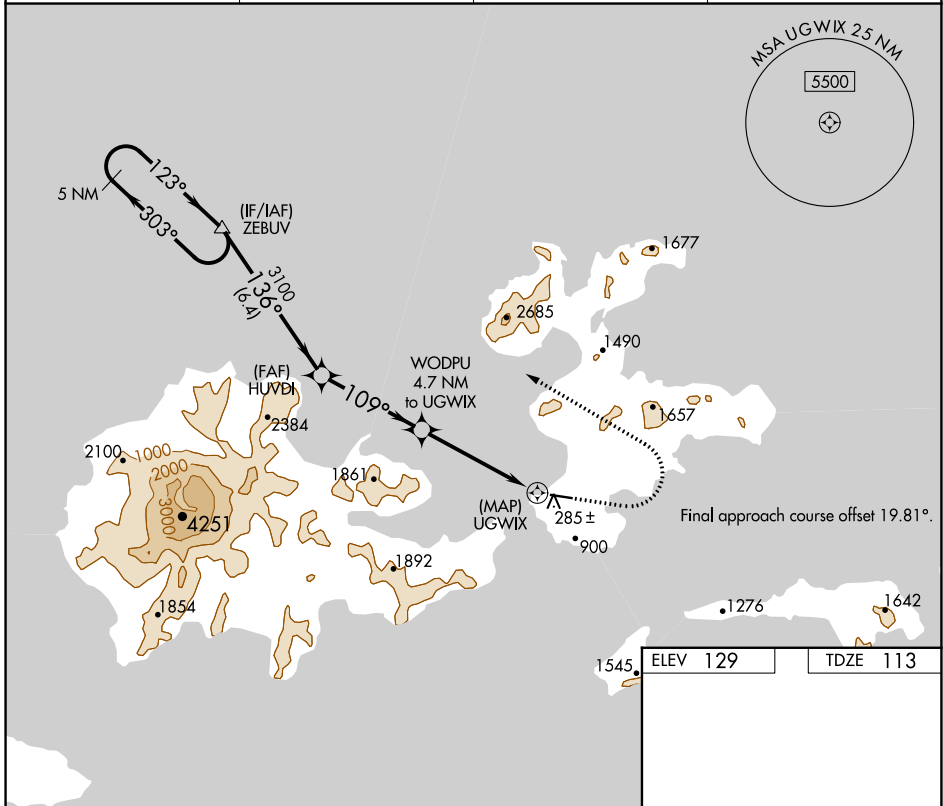


APP CRS	Rwy Idg	4500
109°	TDZE	113
	Apt Elev	129

RNAV (GPS) RWY 9

AKUTAN (7AK)(PAUT)

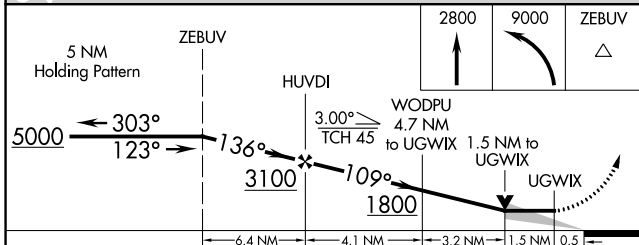
DME/DME RNP-0.3 NA. Procedure NA at night.		MISSED APPROACH: Climb to 2800 then climbing left turn to 9000 direct ZEBUV and hold, continue climb-in-hold to 9000.	
AWOS-3P	ANCHORAGE CENTER	GCO	CTAF
129.05	121.4	130.3	122.9



AK, 11 JUL 2024 to 05 SEP 2024

AK, 11 JUL 2024 to 05 SEP 2024

ELEV 129	TDZE 113
----------	----------



CATEGORY	A	B	C	D
LNVA MDA	780-1	667 (700-1)	780-1 $\frac{7}{8}$	667 (700-1 $\frac{7}{8}$)
CIRCLING	1020-1 $\frac{1}{4}$ 891 (900-1 $\frac{1}{4}$)	1200-1 $\frac{1}{2}$ 1071 (1100-1 $\frac{1}{2}$)	1600-3 1471 (1500-3)	1960-3 1831 (1900-3)

MIRL Rwy 9-27