

COPTER RNAV (GPS) RWY 24

APCH CRS	Rwy ldg	6668
244°	TDZE	16
	Arpt Elev	16

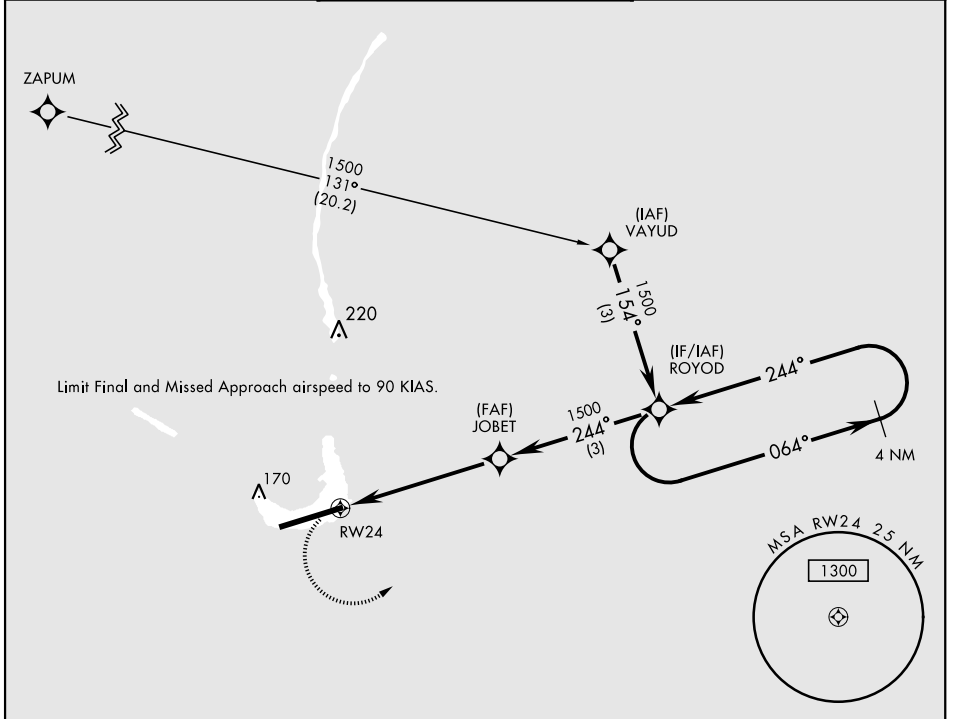
[USA]

BUCHOLZ AAF (PKWA)

When control tower closed, obtain local altimeter setting from Base Ops on 118.8.
DME/DME RNP-0.3 NA

MISSED APPROACH: Climbing left turn to 1500 direct ROYOD and hold.

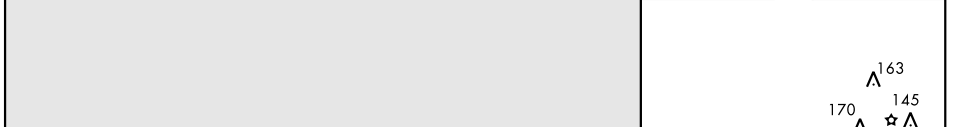
AWOS 119.675	TOWER ★ 126.2 360.2	GND CON 121.9
------------------------	-------------------------------	-------------------------



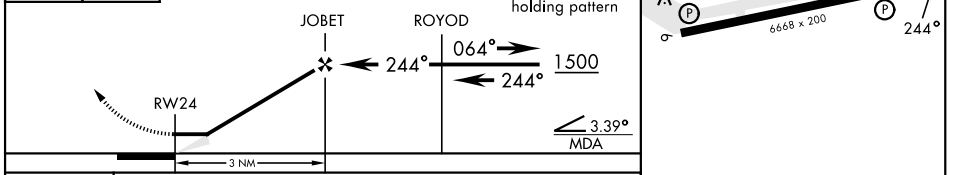
PAC, 11 JUL 2024 to 05 SEP 2024

PAC, 11 JUL 2024 to 05 SEP 2024

ELEV	16	TDZE	16
------	----	------	----



1500 ROYOD TA 5500 VGSI and Descent Angles not coincident.



CATEGORY	COPTER			HIRL Rwy 6-24
LNAV MDA	440-1/2	424	(500-1/2)	REL Rwy 6

COPTER RNAV (GPS) RWY 24