

KWAJALEIN USAKA, MARSHALL I

COPTER RNAV (GPS) RWY 6

APCH CRS	Rwy Idg	6668
064°	TDZE	16
	Arpt Elev	16

[USA]

BUCHOLZ AAF (PKWA)

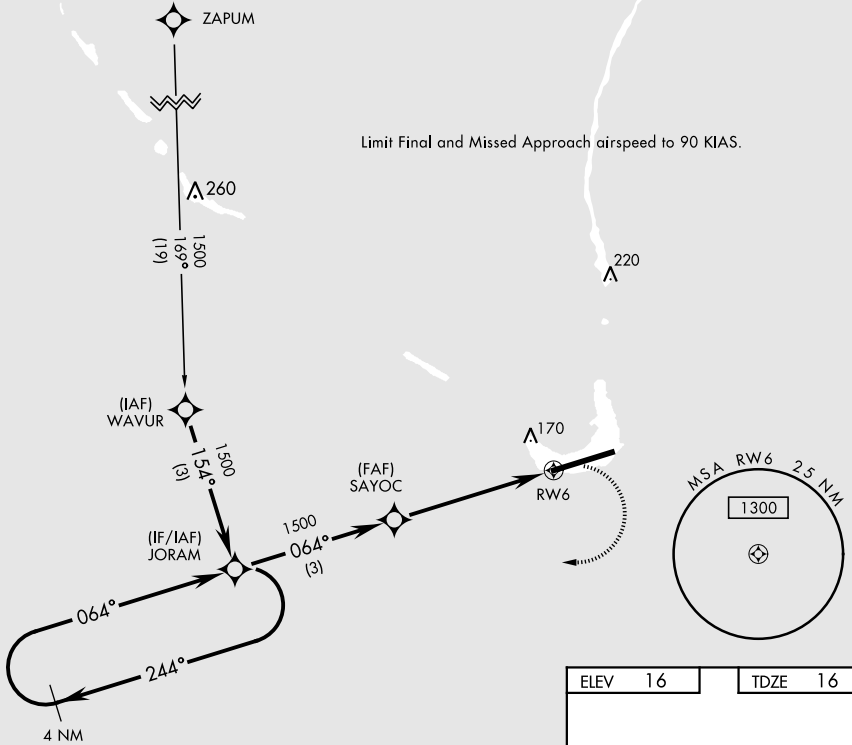
▼ When control tower closed, obtain local altimeter setting from Base Ops on 118.8.
DME/DME RNP-0.3 NA

MISSED APPROACH: Climbing right turn to 1500 direct JORAM and hold.

AWOS
119.675

TOWER ★
126.2 360.2

GND CON
121.9

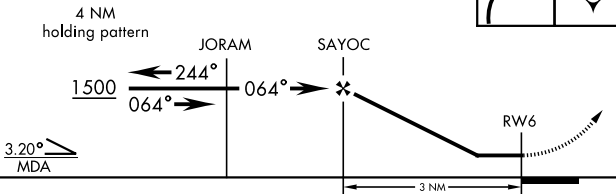


PAC, 11 JUL 2024 to 05 SEP 2024

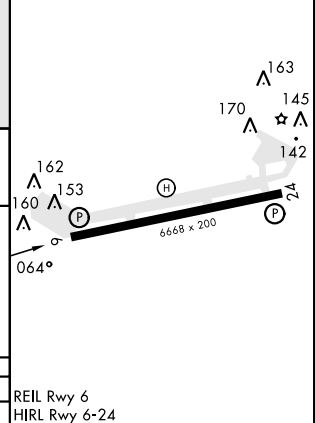
PAC, 11 JUL 2024 to 05 SEP 2024

VGSI and Descent Angles not coincident.

TA 5500



ELEV	16	TDZE	16
------	----	------	----



CATEGORY	COPTER		
LNAV MDA	480-1/2	464	(500-1/2)

REIL Rwy 6
HIRL Rwy 6-24

KWAJALEIN USAKA, MARSHALL I

08° 43' N-167° 44' E

BUCHOLZ AAF (PKWA)

Amdt 1 05JAN17

COPTER RNAV (GPS) RWY 6