

KWAJALEIN USAKA, MARSHALL I

# RNAV (GPS) RWY 6

APCH CRS	Rwy Idg	<b>6668</b>
<b>064°</b>	TDZE	<b>16</b>
	Arprt Elev	<b>16</b>

[USA]

BUCHOLZ AAF (PKWA)

▼ When control tower closed, obtain local altimeter setting from Base Ops on 118.8. DME/DME RNP-0.3 NA.

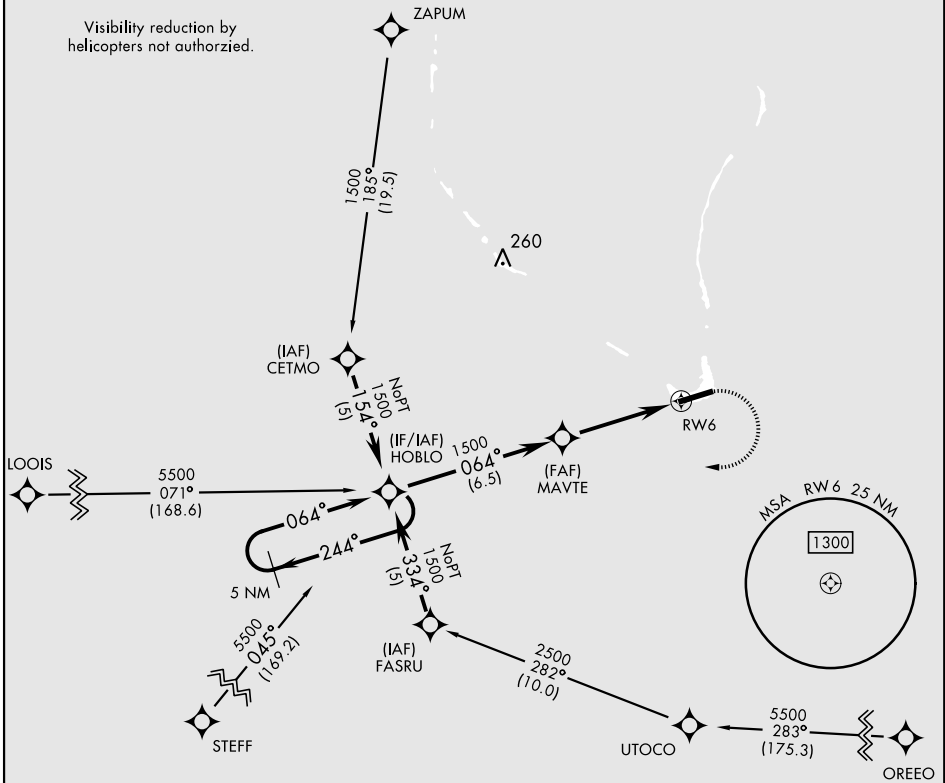
MISSED APPROACH: Climbing right turn to 1500 direct HOBLO and hold

AWOS  
**119.675**

TOWER ★  
**126.2 360.2**

GND CON  
**121.9**

Visibility reduction by helicopters not authorized.



PAC, 11 JUL 2024 to 05 SEP 2024

PAC, 11 JUL 2024 to 05 SEP 2024

5 NM Holding Pattern		TA 5500	1500	HOBLO	ELEV 16	TDZE 16
CATEGORY	A	B	C	D		
LNAV MDA	480-1 464 (500-1)		480-1¼ 464 (500-1¼)	480-1½ 464 (500-1½)		
CIRCLING	500-1 484 (500-1)		500-1½ 484 (500-1½)	580-2 564 (600-2)	HIRL Rwy 6-24 REIL Rwy 6	

KWAJALEIN USAKA, MARSHALL I

08° 43' N-167° 44' E

BUCHOLZ AAF (PKWA)

Amdt 2 02DEC21

# RNAV (GPS) RWY 6