

WAAS CH 53542 W36A	APP CRS 356°	Rwy Idg 4007 TDZE 430 Apt Elev 435
--	------------------------	---

RNAV (GPS) RWY 36

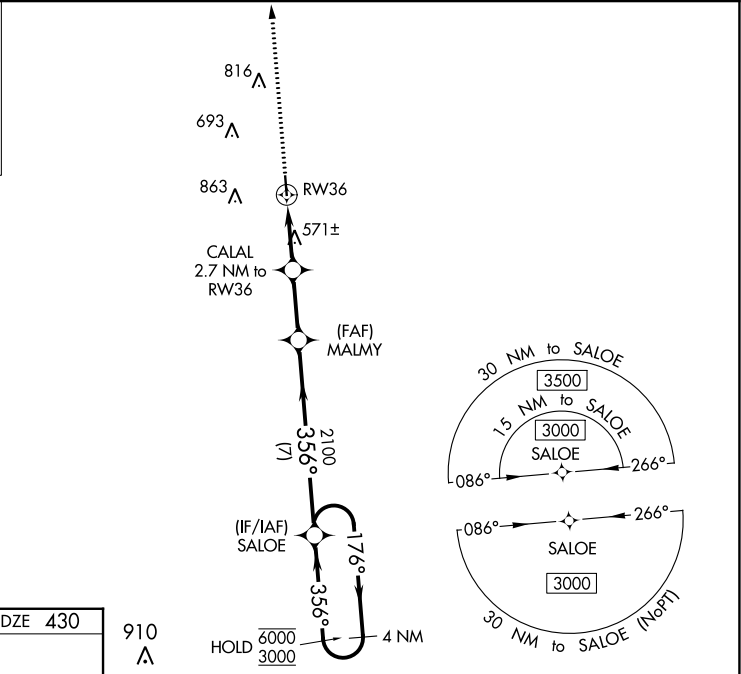
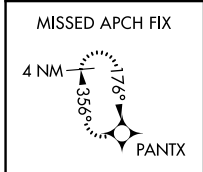
COPIAH COUNTY (M11)

RNP APCH - GPS.

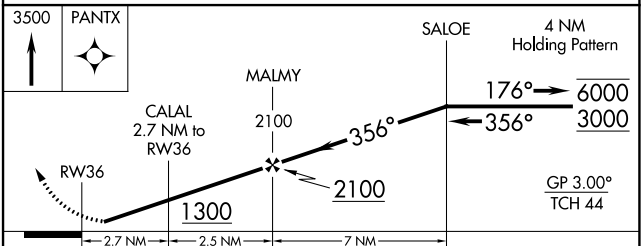
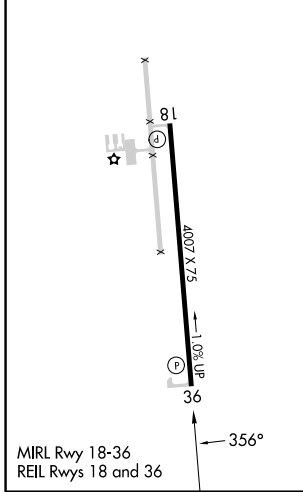
NA Circling Rwy 18 NA at night. Rwy 36 helicopter visibility reduction below $\frac{3}{4}$ SM NA. Baro-VNAV NA. Use Brookhaven altimeter setting; when not received, use Hawkins Fld altimeter setting and increase LPV DA to 756; increase LNAV/VNAV DA to 906; increase all MDAs 40 feet and Circling visibility Cats C and D $\frac{1}{2}$ SM.

MISSED APPROACH: Climb to 3500 direct PANTX and hold, continue climb-in-hold to 3500.

1R7 AWOS-3P 118.125	MEMPHIS CENTER 132.5 259.1	CTAF 122.9
-------------------------------	--------------------------------------	----------------------



ELEV 435	TDZE 430
----------	----------



CATEGORY	A	B	C	D
LPV DA	730-1		300 (300-1)	
LNAV/VNAV DA	880-1 $\frac{3}{8}$		450 (500-1 $\frac{3}{8}$)	
LNAV MDA	880-1	450 (500-1)	880-1 $\frac{3}{8}$	450 (500-1 $\frac{3}{8}$)
CIRCLING	940-1 505 (600-1)	1140-1 705 (800-1)	1280-2 $\frac{1}{2}$ 845 (900-2 $\frac{1}{2}$)	1280-2 $\frac{3}{4}$ 845 (900-2 $\frac{3}{4}$)

SC-4, 11 JUL 2024 to 08 AUG 2024

SC-4, 11 JUL 2024 to 08 AUG 2024