

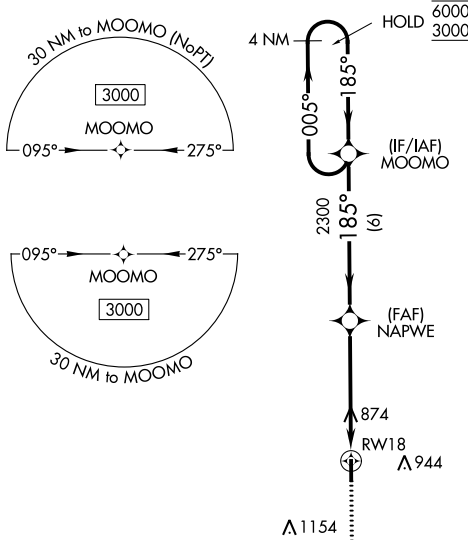
APP CRS	Rwy Idg	4001
185°	TDZE	671
	Apt Elev	671

RNAV (GPS) RWY 18

DELPHI MUNI (I19)

RNP APCH - GPS.	MISSED APPROACH: Climb to 3000 direct OCUPA and hold.
<p>▼ Rwy 18 helicopter visibility reduction below 1 SM NA.</p> <p>▲ NA Use Monticello altimeter setting. Procedure NA at night.</p>	

MCX AWOS-3P 124.05	GRISSEM APP CON* 121.05 338.275	CTAF 122.9
------------------------------	---	----------------------

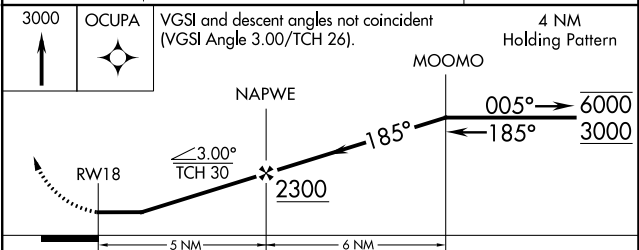
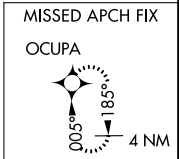


EC-2, 11 JUL 2024 to 08 AUG 2024

EC-2, 11 JUL 2024 to 08 AUG 2024

ELEV 671	TDZE 671
----------	----------

MIRL Rwy 18-36
REIL Rwy 18 and 36



CATEGORY	A	B	C	D
LNAV MDA	1160-1	489 (500-1)	NA	
CIRCLING	1160-1 489 (500-1)	1220-1 549 (600-1)	NA	