

COPTER VOR/DME or TACAN 056°

VORTAC LDN 114.3 Chan 90	APCH CRS 056°	Rwy Idg TDZE Arpt Elev 50 1707 1707
--	-------------------------	---

AL-11678 [USN]

BLUEGRASS (9VA5)

▼ Circling not authorized.
Visibility reduction by helicopter NA.

MISSED APPROACH: Climb to 4000, then right turn to intercept LDN VORTAC R-056 to WLCAT and hold.

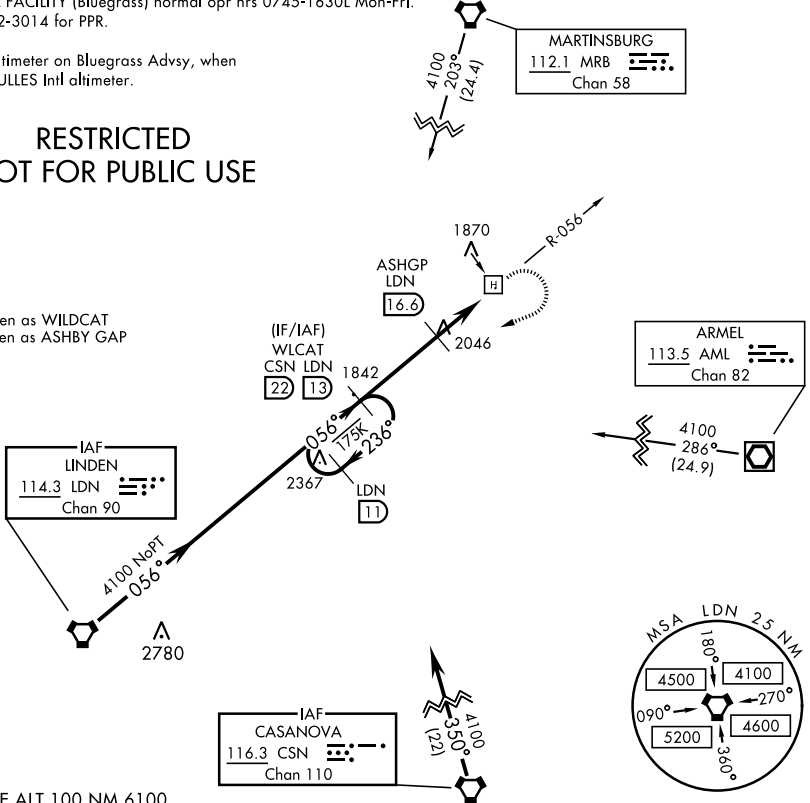
POTOMAC APP CON 120.45 306.925	BLUEGRASS ADVISORY ★ 126.2 241.0
--	--

FEMA SPECIAL FACILITY (Bluegrass) normal opr hrs 0745-1630L Mon-Fri.
Phone 540-542-3014 for PPR.

Obtain local altimeter on Bluegrass Advsy, when not rcvd use DULLES Intl altimeter.

RESTRICTED NOT FOR PUBLIC USE

WLCAT - spoken as WILDCAT
ASHGP - spoken as ASHBY GAP



EMERG SAFE ALT 100 NM 6100

LDN 11	WLCAT CSN LDN 22 13	ASHGP LDN 16.6	4000	WLCAT LDN 13	ELEV 1707	TDZE 1707
CATEGORY	COPTER					
H-056	2440-1 733 (800-1)					
DULLES INTL ALTIMETER SETTING						
H-056	2680-1¼ 973 (1000-1¼)					

COPTER VOR/DME or TACAN 056°

NE-3, 11 JUL 2024 to 08 AUG 2024

NE-3, 11 JUL 2024 to 08 AUG 2024