


LOC/DME I-ABI 110.3 Chan 40	APP CRS 355°	Rwy Idg 7198 TDZE 1776 Apt Elev 1791
---	------------------------	---

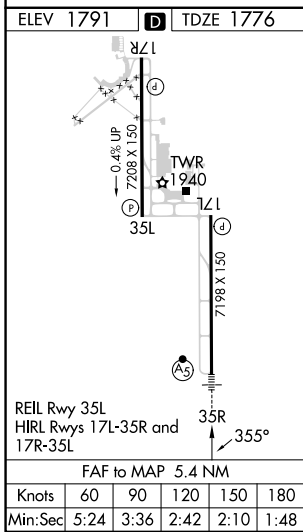
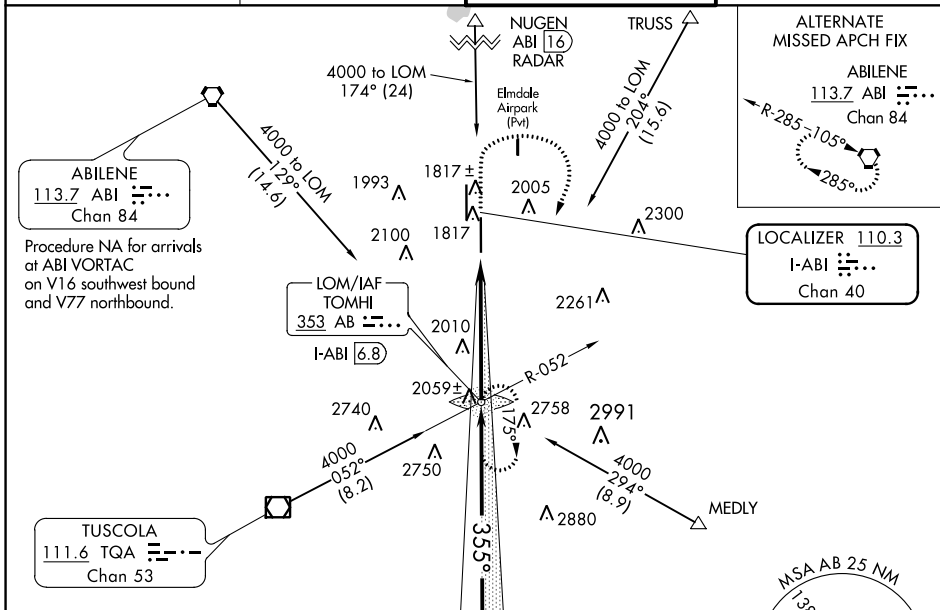
ILS or LOC RWY 35R

ABILENE RGNL (ABI)

ADF required. RADAR required for procedure entry at NUGEN.
 For inop ALS, increase S-ILS 35R Cat E visibility to RVR 4000, and S-LOC 35R Cat C/D/E visibility to 1 3/8 SM.
 ** RVR 1800 authorized with use of FD or AP or HUD to DA.

MALSRL

 MISSED APPROACH: Climb to 3300 then climbing right turn to 4000 direct TOMHI LOM/INT/I-ABI 6.8 DME and hold.

ATIS 118.25	ABILENE APP CON 125.0 336.3 (EAST) 127.2 282.3 (WEST)	ABILENE TOWER 120.1 257.8	GND CON 121.7 348.6
-----------------------	---	-------------------------------------	-------------------------------



3300	4000	TOMHI	TOMHI LOM/INT I-ABI 6.8	Remain within 15 NM
*LOC only.			3573	4000
I-ABI 1.4			I-ABI 2.7	3600
CATEGORY			A	B
S-ILS 35R**			1976/24	200 (200-1/2)
S-LOC 35R			2260/24 484 (500-1/2)	2260/50 484 (500-1)
C CIRCLING	2300-1 509 (600-1)	2320-1 529 (600-1)	2420-1 3/4 629 (700-1 3/4)	2460-2 669 (700-2)
2620-3 829 (900-3)				

SC-2, 08 AUG 2024 to 05 SEP 2024

SC-2, 08 AUG 2024 to 05 SEP 2024