

# HI-ILS or LOC Z RWY 16

LOC I-MUK <b>108.9</b>	APCH CRS <b>158°</b>	Rwy Idg <b>12,134</b> TDZE <b>4083</b> Arprt Elev <b>4093</b>
---------------------------	-------------------------	---

AL-7 [USAF]

HOLLOMAN AFB (KHMN)

RADAR or DME required.

- ▼ \*When ALS inop, increase CAT CDE vis to 3/4 mile.
- \*\*When ALS inop, increase CAT CDE vis to 1 3/8 miles.



MISSED APPROACH: Climb straight ahead to 7000, passing 5000 turn right and intercept HMN R-320 outbound to JOBAM and hold.

ATIS ★ <b>273.5</b>	ALBUQUERQUE CENTER <b>132.65 257.6</b>	APP CON <b>120.6 269.225</b>	TOWER ★ <b>119.3 254.4</b>	GND CON <b>127.05 275.8</b>	CLNC DEL <b>126.7 289.4</b>
------------------------	---	---------------------------------	-------------------------------	--------------------------------	--------------------------------

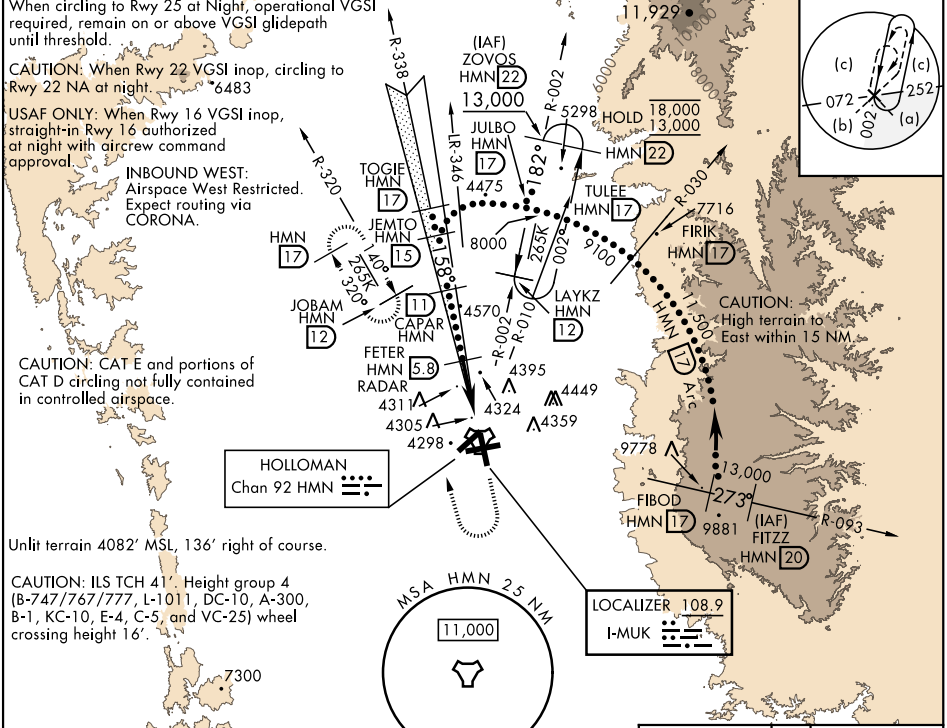
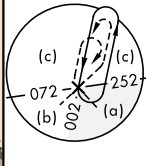
When circling to Rwy 25 at Night, operational VGSI required, remain on or above VGSI glidepath until threshold.

CAUTION: When Rwy 22 VGSI inop, circling to Rwy 22 NA at night. \*6483

USAF ONLY: When Rwy 16 VGSI inop, straight-in Rwy 16 authorized at night with aircrew command approval.

INBOUND WEST: Airspace West Restricted. Expect routing via CORONA.

CAUTION: CAT E and portions of CAT D circling not fully contained in controlled airspace.

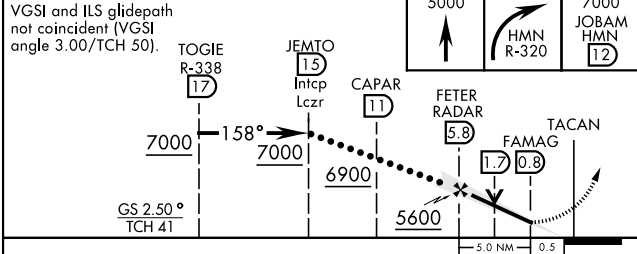


Unlit terrain 4082' MSL, 136' right of course.

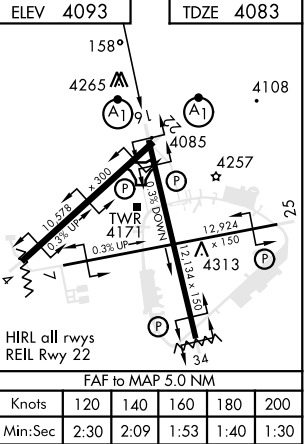
CAUTION: ILS TCH 41. Height group 4 (B-747/767/777, L-1011, DC-10, A-300, B-1, KC-10, E-4, C-5, and VC-25) wheel crossing height 16'.

EMERG SAFE ALT 100 NM 14,200

VGSI and ILS glidepath not coincident (VGSI angle 3.00/TCH 50).



CATEGORY	C	D	E
S-ILS 16 *	4283-1/2	200	(200-1/2)
S-LOC 16 **	4600-1	517	(600-1)
CIRCLING	4680-1 1/2 587 (600-1 1/2)	4740-2 647 (700-2)	4780-2 1/2 687 (700-2 1/2)



# HI-ILS or LOC Z RWY 16

SW-1, 08 AUG 2024 to 05 SEP 2024

SW-1, 08 AUG 2024 to 05 SEP 2024