

LOC/DME I-ETF 111.5 Chan 52	APP CRS 042°	Rwy Idg TDZE 3923 Apt Elev 3962	12020
---	------------------------	---	--------------

LOC/DME RWY 4

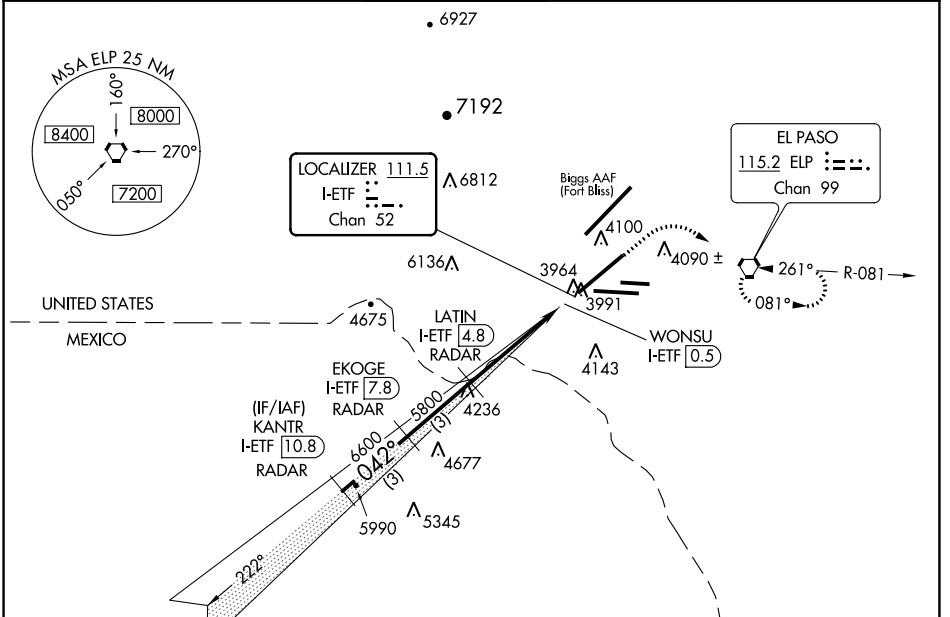
EL PASO INTL (ELP)

RADAR required for procedure entry.

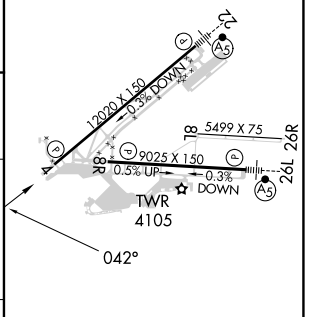
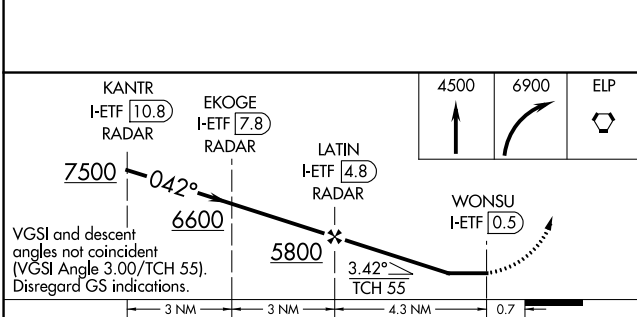
ASR Circling NA for Cat D north of Rwy 26R and northwest of Rwy 4.

MISSED APPROACH: Climb to 4500 then climbing right turn to 6900 direct ELP VORTAC and hold, continue climb-in-hold to 6900.

D-ATIS 120.0 254.3	EL PASO APP CON 124.25 296.85	EL PASO TOWER 118.3 239.275	GND CON 121.9 348.6	CLNC DEL 125.0 379.1
------------------------------	---	---------------------------------------	-------------------------------	--------------------------------



ELEV 3962	D TDZE 3923
-----------	--------------------



CATEGORY	A	B	C	D
S-4	4300/50	377 (400-1)		4300/60 377 (400-1¼)
C CIRCLING	4420-1 458 (500-1)	4460-1 498 (500-1)	4480-1½ 518 (600-1½)	4680-2¼ 718 (800-2¼)

MIRL Rwy 8L-26R
REIL Rwy 4 and 8R
HIRL Rwy 4-22 and 8R-26L

SC-3, 08 AUG 2024 to 05 SEP 2024

SC-3, 08 AUG 2024 to 05 SEP 2024