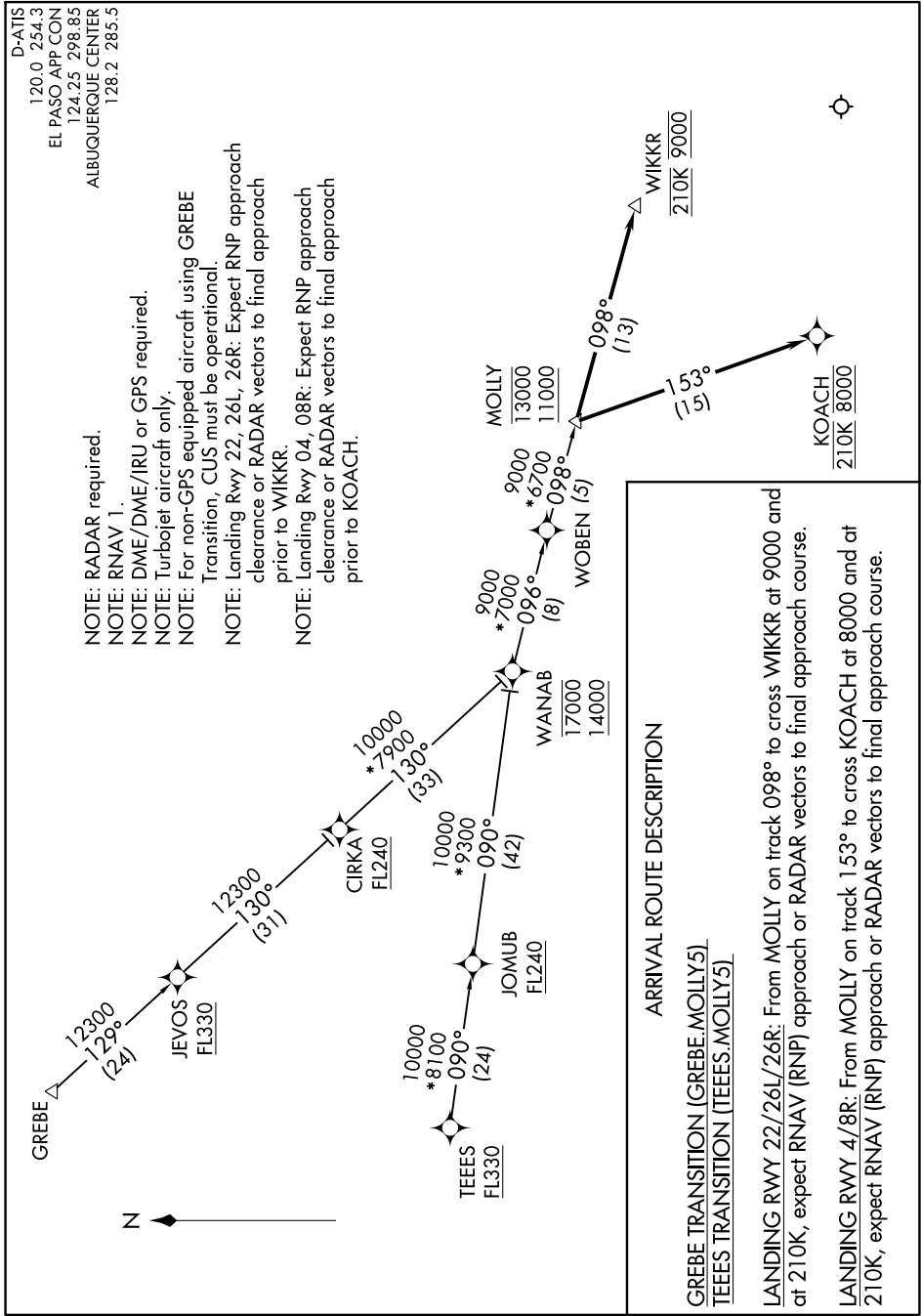


(MOLLY.MOLLY5) 20310
MOLLY FIVE ARRIVAL (RNAV)

AL-134 (FAA)

EL PASO INTL (ELP)
 EL PASO, TEXAS

SC-3, 08 AUG 2024 to 05 SEP 2024



D-ATIS
 120.0 254.3
 EL PASO APP CON
 124.25 298.85
 ALBUQUERQUE CENTER
 128.2 285.5

NOTE: RADAR required.
 NOTE: RNAV 1.
 NOTE: DME/DME/IRU or GPS required.
 NOTE: Turbojet aircraft only.
 NOTE: For non-GPS equipped aircraft using GREBE Transition, CUS must be operational.
 NOTE: Landing Rwy 22, 26L, 26R: Expect RNP approach clearance or RADAR vectors to final approach prior to WIKKR.
 NOTE: Landing Rwy 04, 08R: Expect RNP approach clearance or RADAR vectors to final approach prior to KOACH.

ARRIVAL ROUTE DESCRIPTION

GREBE TRANSITION [(GREBE.MOLLY5)]
TEES TRANSITION [(TEES.MOLLY5)]

LANDING RWY 22/26L/26R: From MOLLY on track 098° to cross WIKKR at 9000 and at 210K, expect RNAV (RNP) approach or RADAR vectors to final approach course.

LANDING RWY 4/8R: From MOLLY on track 153° to cross KOACH at 8000 and at 210K, expect RNAV (RNP) approach or RADAR vectors to final approach course.

MOLLY FIVE ARRIVAL (RNAV)
(MOLLY.MOLLY5) 05NOV20

EL PASO, TEXAS
 EL PASO INTL (ELP)

SC-3, 08 AUG 2024 to 05 SEP 2024