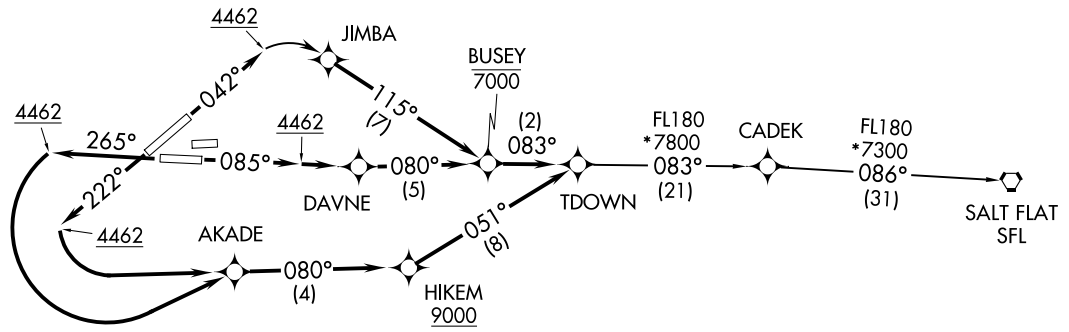
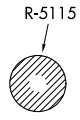
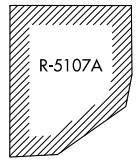


**TOP ALTITUDE:
ASSIGNED BY ATC**

- D-ATIS 120.0 254.3
- CLNC DEL 125.0 379.1
- GND CON 121.9 348.6
- EL PASO TOWER 118.3 239.275
- EL PASO DEP CON 119.15 263.0
- ABQ CENTER 135.875 292.15



TAKEOFF MINIMUMS

Rwys 4, 8R: Standard with a minimum climb of 500' per NM to 4462.
 Rwys 22, 26L: Standard with a minimum climb of 500' per NM to 9000.

- NOTE: DME/DME/IRU or GPS required.
- NOTE: RNAV 1.
- NOTE: For use by Turbojet aircraft only.
- NOTE: RADAR required for non-GPS equipped aircraft.

(NARRATIVE ON FOLLOWING PAGE)

NOTE: Chart not to scale.

TDOWN THREE DEPARTURE (RNAV)
(TDOWN3.TDOWN) 21JUL16

(TDOWN3.TDOWN) 22307
TDOWN THREE DEPARTURE (RNAV)

EL PASO, TEXAS
EL PASO INTL (EILP)

EL PASO INTL (EILP)
EL PASO, TEXAS

TDOWN THREE DEPARTURE (RNAV)



DEPARTURE ROUTE DESCRIPTION

TAKEOFF RWY 4: Climb heading 042° to 4462, then right turn direct JIMBA, then on track 115° to cross BUSEY at or below 7000, then on track 083° to TDOWN. Thence

TAKEOFF RWY 8R: Climb heading 085° to 4462, then direct DAVNE, then on track 080° to cross BUSEY at or below 7000, then on track 083° to TDOWN. Thence

TAKEOFF RWY 22: Climb heading 222° to 4462, then left turn direct AKADE, then on track 080° to cross HIKEM at or above 9000, then on track 051° to TDOWN. Thence

TAKEOFF RWY 26L: Climb heading 265° to 4462, then left turn direct AKADE, then on track 080° to cross HIKEM at or above 9000, then on track 051° to TDOWN. Thence

. . . . on depicted route to SFL VORTAC.

SALT FLAT TRANSITION (TDOWN3.SFL)

SC-3, 08 AUG 2024 to 05 SEP 2024

SC-3, 08 AUG 2024 to 05 SEP 2024