

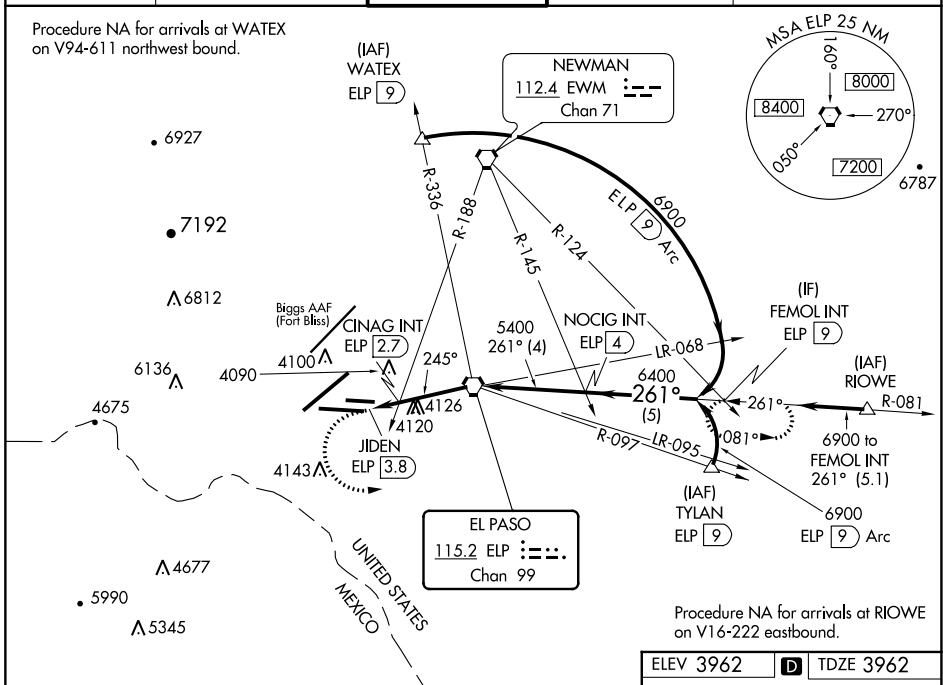
VORTAC ELP <b>115.2</b> Chan <b>99</b>	APP CRS <b>245°</b>	Rwy Idg TDZE <b>3962</b> Apt Elev <b>3962</b>
--	------------------------	---

# VOR RWY 26L

EL PASO INTL (ELP)

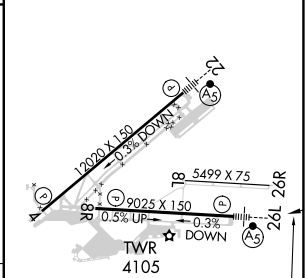
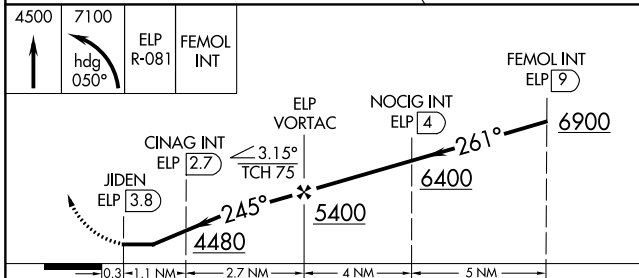
<b>ASR</b> Inop table does not apply to S-26L and CINAG fix minimums S-26L. Circling NA for Cat D northwest of Rwy 4-22.	<b>MALSR</b> 	<b>MISSED APPROACH:</b> Climb to 4500 then climbing left turn to 7100 on heading 050° and on ELP VORTAC R-081 to FEMOL INT/9 DME and hold.
---	------------------	--

D-ATIS <b>120.0 254.3</b>	EL PASO APP CON <b>124.25 298.85</b>	EL PASO TOWER <b>118.3 239.275</b>	GND CON <b>121.9 348.6</b>	CLNC DEL <b>125.0 379.1</b>
------------------------------	---	---------------------------------------	-------------------------------	--------------------------------



Procedure NA for arrivals at RIOWE on V16-222 eastbound.

ELEV 3962	<b>D</b> TDZE 3962
-----------	--------------------



CATEGORY	A	B	C	D	E
S-26L	4480-1 518 (600-1)		4480-1 <sup>3</sup> / <sub>8</sub> 518 (600-1 <sup>3</sup> / <sub>8</sub> )		NA
<b>C</b> CIRCLING	4480-1 518 (600-1)		4480-1 <sup>1</sup> / <sub>2</sub> 518 (600-1 <sup>1</sup> / <sub>2</sub> )	4680-2 718 (800-2)	NA
CINAG FIX MINIMUMS (DUAL VOR RECEIVERS OR DME REQUIRED)					
S-26L	4380-1 418 (500-1)		4380-1 <sup>1</sup> / <sub>8</sub> 418 (500-1 <sup>1</sup> / <sub>8</sub> )		NA
<b>C</b> CIRCLING	4420-1 458 (500-1)	4440-1 478 (500-1)	4480-1 <sup>1</sup> / <sub>2</sub> 518 (600-1 <sup>1</sup> / <sub>2</sub> )	4680-2 <sup>1</sup> / <sub>4</sub> 718 (800-2 <sup>1</sup> / <sub>4</sub> )	NA

MRL Rwy 8L-26R REIL Rws 4 and 8R HIRL Rws 4-22 and 8R-26L					
FAF to MAP 3.8 NM					
Knots	60	90	120	150	180
Min:Sec	3:48	2:32	1:54	1:31	1:16

SC-3, 08 AUG 2024 to 05 SEP 2024

SC-3, 08 AUG 2024 to 05 SEP 2024