


LOC I-PAE <b>109.3</b>	APP CRS <b>163°</b>	Rwy Idg TDZE Apt Elev	<b>9010</b> <b>570</b> <b>608</b>
---------------------------	------------------------	-----------------------------	---

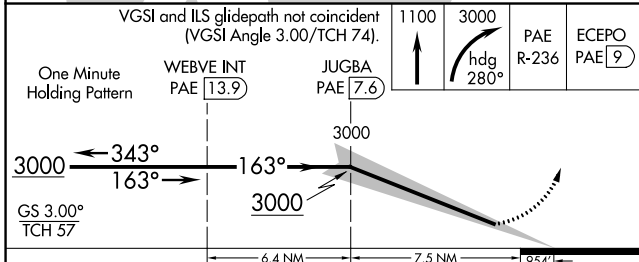
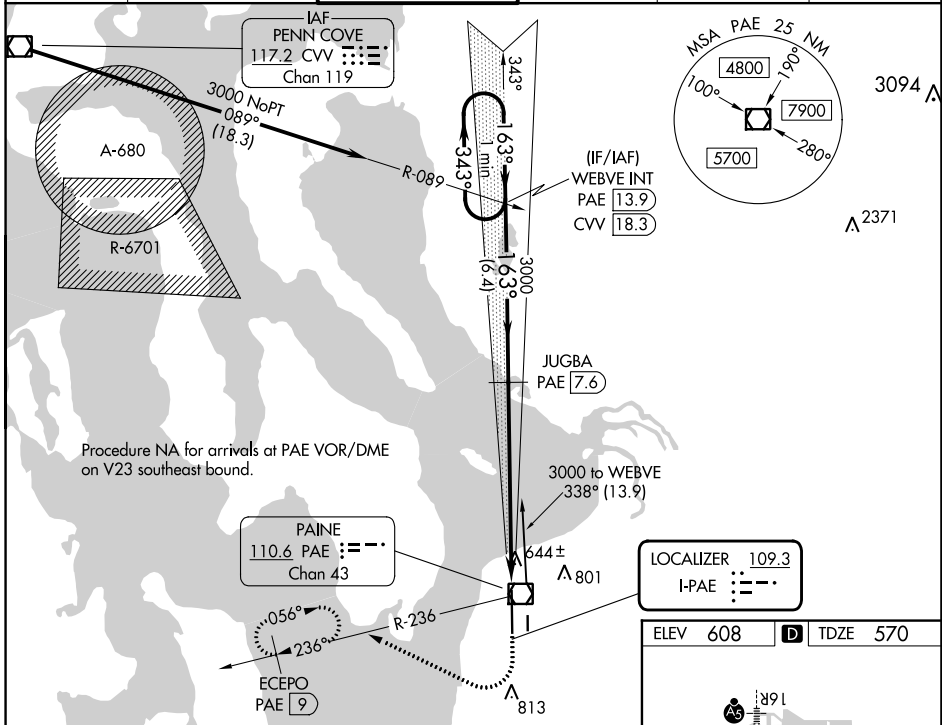
# ILS Z RWY 16R (SA CAT II)

SEATTLE PAINE FLD INTL (PAE)

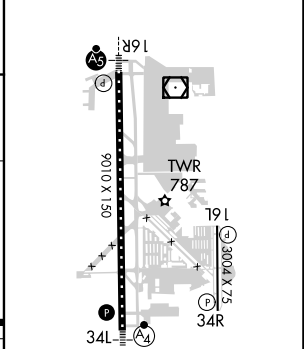
**▼** DME required. Reduced Lighting: Requires specific OPSPEC, MSPEC, or LOA approval and use of autoland or HUD to touchdown.  
**▲** DME from PAE VOR/DME. Simultaneous reception of I-PAE and PAE DME required. Procedure NA when control tower closed.

**MALSR**  MISSED APPROACH: Climb to 1100 then climbing right turn to 3000 on heading 280° and PAE VOR/DME R-236 to ECEPO/PAE 9 DME and hold, continue climb-in-hold to 3000.

ATIS <b>128.65</b>	SEATTLE APP CON <b>128.5 306.9</b>	PAINE TOWER ★ <b>132.95 (CTAF) 0 256.7</b>	GND CON <b>121.8 339.8</b>	CLNC DEL <b>127.175</b>	UNICOM <b>122.95</b>
-----------------------	---------------------------------------	---	-------------------------------	----------------------------	-------------------------



ELEV 608	<b>D</b> TDZE 570
----------	-------------------



CATEGORY	A	B	C	D
S-ILS 16R	RA 116/12 100 DA 670			

## SA CATEGORY II ILS-SPECIAL AIRCREW & AIRCRAFT CERTIFICATION REQUIRED

TDZ/CL Rwy 16R  
 HIRL Rwy 16R-34L  
 REIL Rws 16L and 34R  
 MRL Rws 11-29 and 16L-34R

NW-1, 08 AUG 2024 to 05 SEP 2024

NW-1, 08 AUG 2024 to 05 SEP 2024