

# EL DORADO ONE DEPARTURE

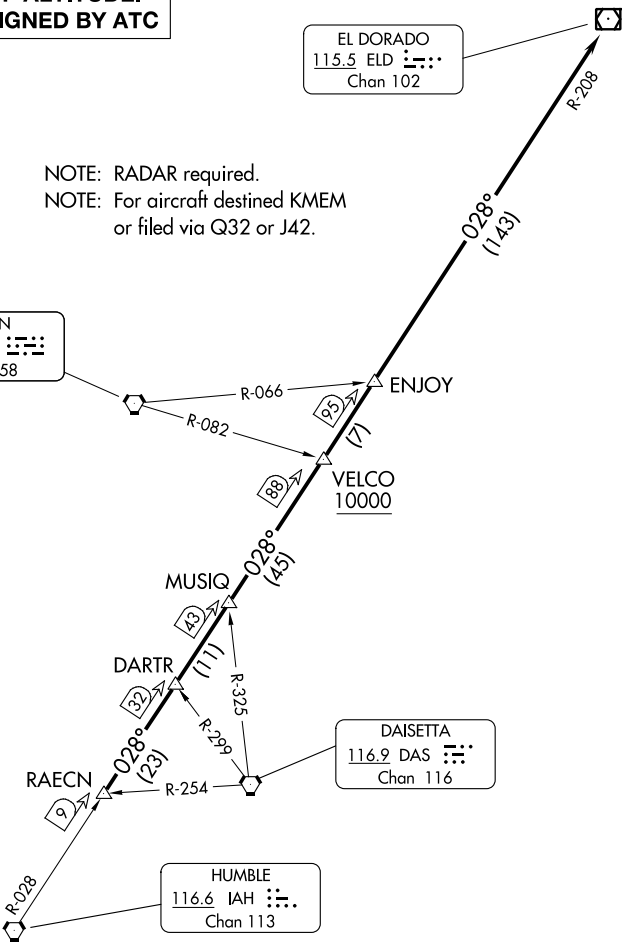
ATIS  
135.575 269.9  
GND CON  
121.6 275.8  
ELLINGTON TOWER  
126.05 253.5  
HOUSTON DEP CON  
134.45 284.0

**TOP ALTITUDE:  
ASSIGNED BY ATC**

EL DORADO  
115.5 ELD :--:--:  
Chan 102

NOTE: RADAR required.  
NOTE: For aircraft destined KMEM  
or filed via Q32 or J42.

LUFKIN  
112.1 LFK :--:--:  
Chan 58



DAISETTA  
116.9 DAS :--:--:  
Chan 116

HUMBLE  
116.6 IAH :--:--:  
Chan 113

### TAKEOFF MINIMUMS

Rwys 4, 17L/R, 35L/R: Standard.  
Rwy 22: 200-1¼ or standard with minimum  
climb of 214' per NM to 300 or alternatively with  
standard takeoff minimums and a normal 200' per  
NM climb gradient, takeoff must occur no later than  
1400' prior to DER.

NOTE: Chart not to scale.

(CONTINUED ON FOLLOWING PAGE)

SC-5, 08 AUG 2024 to 05 SEP 2024

SC-5, 08 AUG 2024 to 05 SEP 2024

# EL DORADO ONE DEPARTURE

(ELD1.ELD) 07OCT21

# EL DORADO ONE DEPARTURE



## DEPARTURE ROUTE DESCRIPTION

TAKEOFF ALL RUNWAYS: Climb on assigned heading for RADAR vectors to RAE CN INT. Maintain ATC assigned altitude. Expect filed altitude 10 minutes after departure, thence. . . .

. . . .on IAH R-028 and the ELD R-208 to ELD VOR/DME, cross VELCO INT at or above 10000.

SC-5, 08 AUG 2024 to 05 SEP 2024

SC-5, 08 AUG 2024 to 05 SEP 2024