

# HI-TACAN RWY 35L

TACAN EFD Chan <b>31</b>	APCH CRS <b>002°</b>	Rwy Idg THRE Arprt Elev <b>9001</b> <b>28</b> <b>33</b>	AL-197 [USAF]	ELLINGTON (KEFD)
-----------------------------	-------------------------	--	---------------	------------------

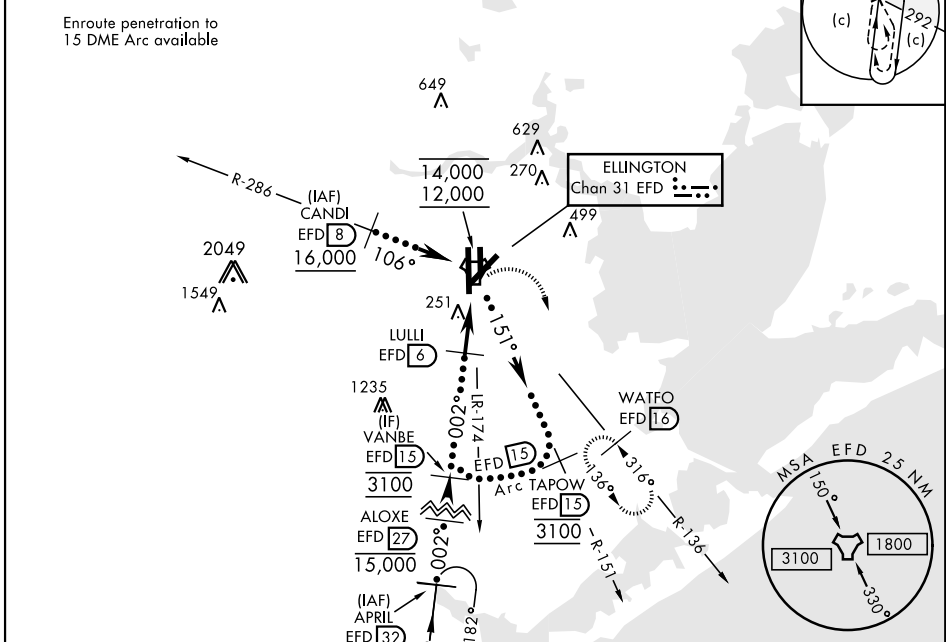
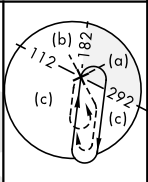
RADAR required for procedure entry

**MALS F** MISSED APPROACH: Climbing right turn to 3100 on EFD TACAN R-136 to WATFO/ EFD 16 DME and hold.

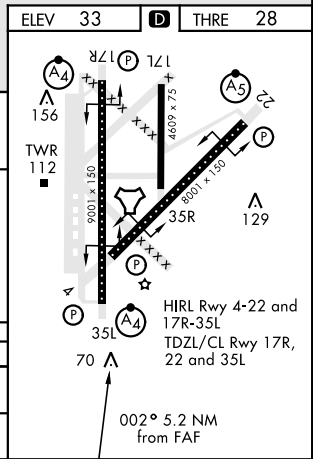
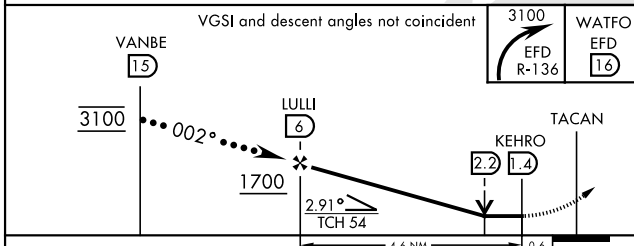
**A4** \* When ALS inop, increase CAT CDE vis to 1 1/2 miles.  
\*\* Circling not authorized W of Rwy 17R-35L.

ATIS <b>135.575 269.9</b>	HOUSTON APP CON <b>134.45 284.0</b>	TOWER <b>126.05 253.5</b>	GND CON <b>121.6 275.8</b>
------------------------------	--	------------------------------	-------------------------------

EFD TACAN	N29°36.36' W95°09.58'
CANDI	N29°39.24' W95°18.17'
APRIL	N29°04.53' W95°14.05'
WATFO	N29°23.90' W94°58.07'



ELEV 33	<b>D</b> THRE 28
---------	------------------



CATEGORY	C	D	E
S-35L *	520/60	492	(500-1 1/4)
<b>C</b> CIRCLING **	580-1 1/2 547 (600-1 1/2)	640-2 607 (700-2)	700-2 1/4 667 (700-2 1/4)

HOUSTON, TEXAS 29°36'N-95°10'W ELLINGTON (KEFD)

# HI-TACAN RWY 35L

SC-5, 08 AUG 2024 to 05 SEP 2024

SC-5, 08 AUG 2024 to 05 SEP 2024