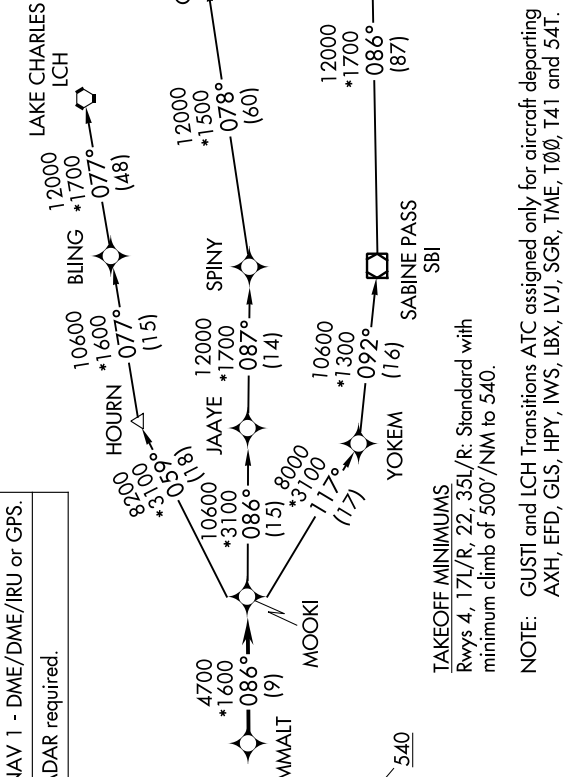
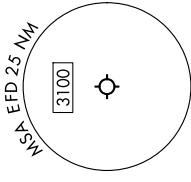


MMALT SEVEN DEPARTURE (RNAV)

SC-5, 08 AUG 2024 to 05 SEP 2024

RNAV 1 - DME/DME/IRU or GPS.
RADAR required.

HOUSTON DEP CON
134.45 284.0
ATIS
135.575 269.9
GND CON
121.6 275.8
ELLINGTON TOWER
126.05 253.5



TAKEOFF MINIMUMS
Rwys 4, 17L/R, 22, 35L/R: Standard with
minimum climb of 500'/NM to 540.

NOTE: GUSTI and LCH Transitions ATC assigned only for aircraft departing
AXH, EFD, GLS, HPY, IWS, LBX, LVJ, SGR, TME, T00, T41 and 541.

NOTE: Chart not to scale.

DEPARTURE ROUTE DESCRIPTION

TAKEOFF RUNWAY 4: Climb on heading 039° to 540, for RADAR vectors to MMALT, thence. . . .
TAKEOFF RUNWAYS 17L/R: Climb on heading 174° to 540, for RADAR vectors to MMALT, thence. . . .
TAKEOFF RUNWAY 22: Climb on heading 219° to 540, for RADAR vectors to MMALT, thence. . . .
TAKEOFF RUNWAYS 35L/R: Climb on heading 354° to 540, for RADAR vectors to MMALT, thence. . . .
...on track 086° to MOOKI, then on (transition). Maintain ATC assigned altitude.
Expect filed altitude 10 minutes after departure.

- GUSTI TRANSITION (MMALT7.GUSTI)
- LAKE CHARLES TRANSITION (MMALT7.LCH)
- WHITE LAKE TRANSITION (MMALT7.ILA)

MMALT SEVEN DEPARTURE (RNAV)

SC-5, 08 AUG 2024 to 05 SEP 2024