

CRIED ONE DEPARTURE

AL-198 (FAA)

WILLIAM P HOBBY (HOU)
HOUSTON, TEXAS

D-ATIS
124.6
CLNC DEL
125.45
CPDLC
GND CON
121.9
HOBBY TOWER
118.7 256.9
HOUSTON DEP CON
132.25 285.425

**TOP ALTITUDE:
16000**

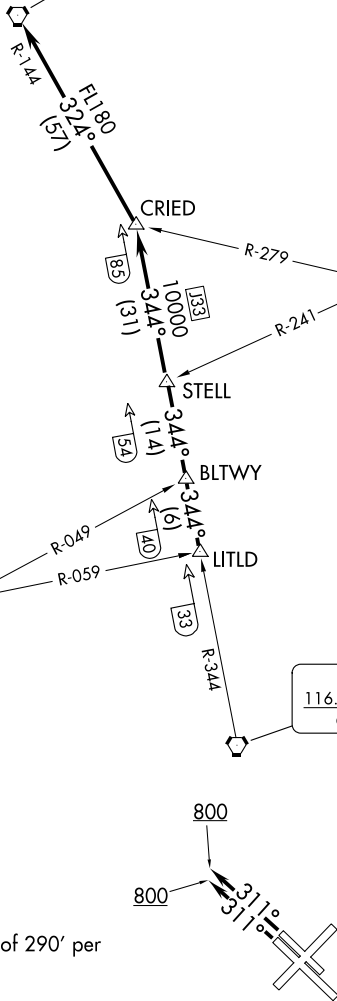
CEDAR CREEK
114.8 CQY
Chan 95

LUFKIN
112.1 LFK
Chan 58

NAVASOTA
115.9 TNV
Chan 106

HUMBLE
116.6 IAH
Chan 113

NOTE: RADAR required.



SC-5, 08 AUG 2024 to 05 SEP 2024

SC-5, 08 AUG 2024 to 05 SEP 2024

TAKEOFF MINIMUMS
Rwys 4, 13L/R, 31L/R: Standard.
Rwy 22: Standard with minimum climb of 290' per
NM to 1500.

(CONTINUED ON FOLLOWING PAGE)

NOTE: Chart not to scale.

CRIED ONE DEPARTURE

CRIED ONE DEPARTURE

AL-198 (FAA)



DEPARTURE ROUTE DESCRIPTION

TAKEOFF RUNWAYS 4, 13L/R, 22: Climb on assigned heading for RADAR vectors to LITLD INT, maintain 16000. Expect filed altitude 10 minutes after departure, thence

TAKEOFF RUNWAYS 31L/R: Climb on heading 311° to 800 before turning, then climb on assigned heading for RADAR vectors to LITLD INT, maintain 16000. Expect filed altitude 10 minutes after departure, thence

. . . . on IAH R-344 to STELL INT, then on IAH R-344 to CRIED INT, then left turn on CQY R-144 to CQY VORTAC.

SC-5, 08 AUG 2024 to 05 SEP 2024

SC-5, 08 AUG 2024 to 05 SEP 2024