

RETRYR EIGHT DEPARTURE (RNAV)  
(RETRYR8.RETYR) 03NOV22

RNAV 1 - DME/DME/IRU or GPS.  
RADAR required.

**TOP ALTITUDE:  
16000**

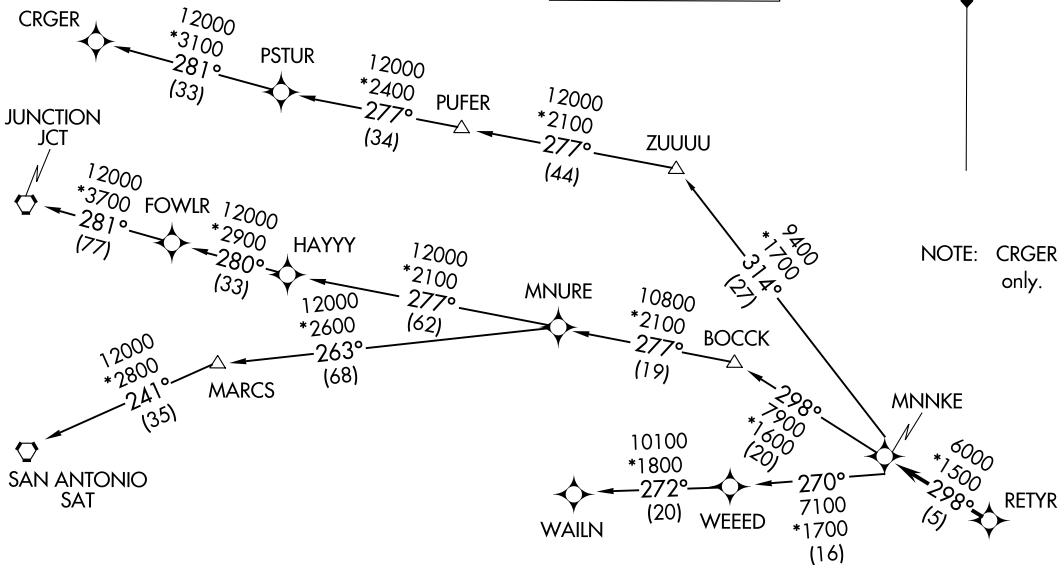


D-ATIS 124.6  
CLNC DEL 125.45  
CPDLC  
GND CON 121.9  
HOBBY TOWER 118.7 256.9  
HOUSTON DEP CON 126.675 339.8

(RETRYR8.RETYR) 22307  
RETRYR EIGHT DEPARTURE (RNAV)

AL-198 (FAA)

WILLIAM P HOBBY (HDT)  
HOUSTON, TEXAS



NOTE: CRGER Transition ATC assigned only.

**TAKEOFF MINIMUMS**

Rwys 4, 13L/R, 31L/R: Standard with minimum climb of 500' per NM to 560.  
Rwy 22: Standard with minimum climb of 500' per NM to 800.

NOTE: Chart not to scale.

(NARRATIVE ON FOLLOWING PAGE)

HOUSTON, TEXAS  
WILLIAM P HOBBY (HDT)

# RETYR EIGHT DEPARTURE (RNAV)



## DEPARTURE ROUTE DESCRIPTION

TAKEOFF RUNWAY 4: Climb on heading 041° to 560, expect RADAR vectors to RETYR, thence . . . .

TAKEOFF RUNWAYS 13L/R: Climb on heading 131° to 560, expect RADAR vectors to RETYR, thence . . . .

TAKEOFF RUNWAY 22: Climb on heading 221° to 560, expect RADAR vectors to RETYR, thence . . . .

TAKEOFF RUNWAYS 31L/R: Climb on heading 311° to 560, expect RADAR vectors to RETYR, thence . . . .

. . . . on track 298° to MNNKE, then on (transition). Maintain 16000, expect filed altitude 10 minutes after departure.

CRGR TRANSITION (RETYR8.CRGR)

JUNCTION TRANSITION (RETYR8.JCT)

MNURE TRANSITION (RETYR8.MNURE)

SAN ANTONIO TRANSITION (RETYR8.SAT)

WAILN TRANSITION (RETYR8.WAILN)

SC-5, 08 AUG 2024 to 05 SEP 2024

SC-5, 08 AUG 2024 to 05 SEP 2024