

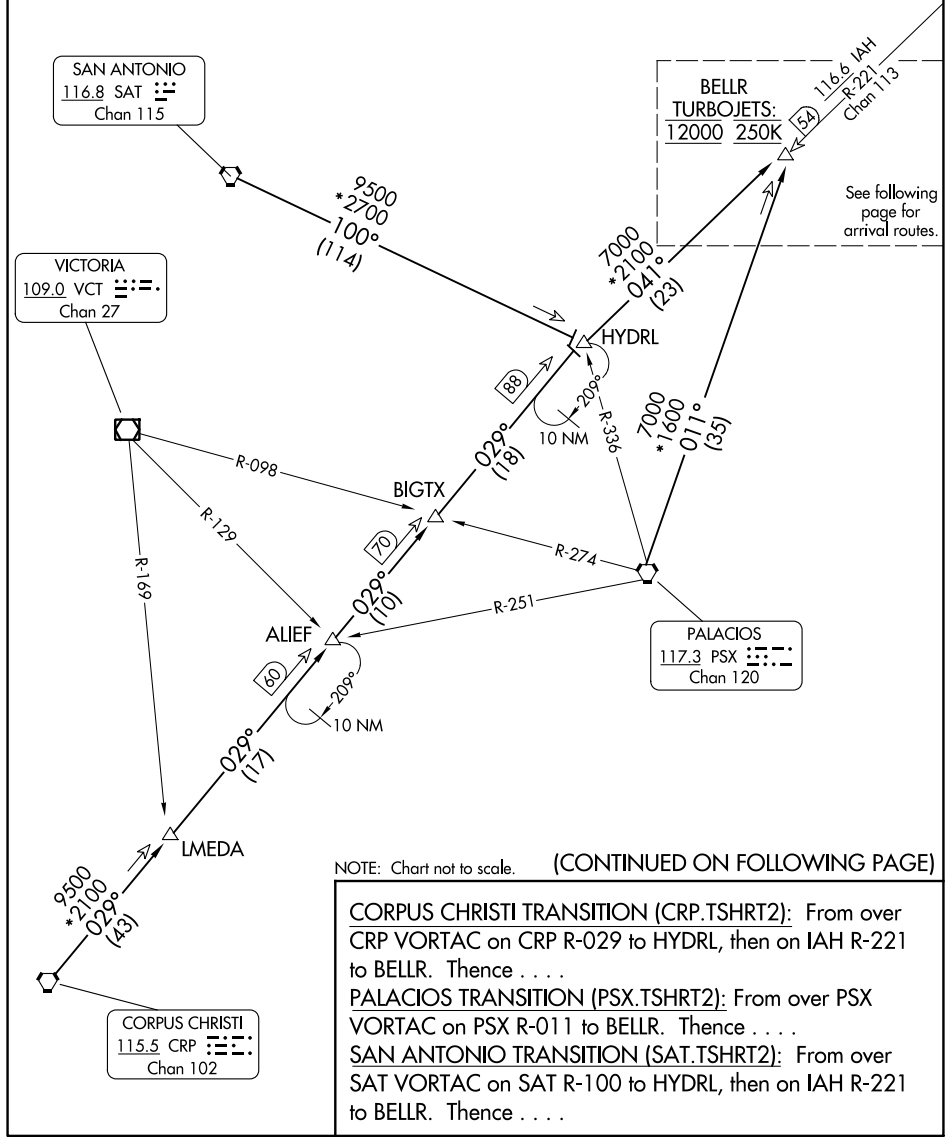
TSHRT TWO ARRIVAL

Transition Routes

HOUSTON, TEXAS

HOUSTON APP CON
 119.175 291.675
 EFD ATIS
 135.575 269.9
 HOU D-ATIS
 124.6
 SGR ATIS ★
 118.125
 TME ATIS
 119.525

NOTE: RADAR required.
 NOTE: DME/DME/IRU or GPS equipped turbojet and turboprop aircraft landing HOU must file the BELLR (RNAV) STAR.
 NOTE: DME required.
 NOTE: DME required for holding at HYDRL.



SC-5, 08 AUG 2024 to 05 SEP 2024

SC-5, 08 AUG 2024 to 05 SEP 2024

NOTE: Chart not to scale. (CONTINUED ON FOLLOWING PAGE)

CORPUS CHRISTI TRANSITION (CRP.TSHRT2): From over CRP VORTAC on CRP R-029 to HYDRL, then on IAH R-221 to BELLR. Thence

PALACIOS TRANSITION (PSX.TSHRT2): From over PSX VORTAC on PSX R-011 to BELLR. Thence

SAN ANTONIO TRANSITION (SAT.TSHRT2): From over SAT VORTAC on SAT R-100 to HYDRL, then on IAH R-221 to BELLR. Thence

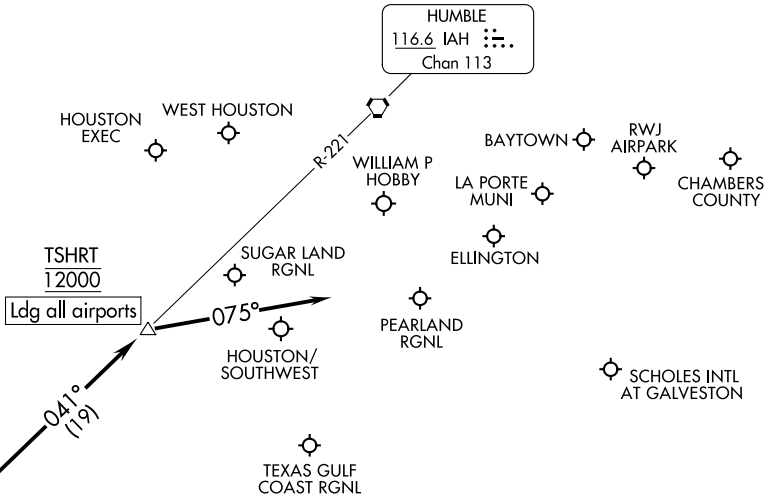
TSHRT TWO ARRIVAL

Transition Routes

HOUSTON, TEXAS

HOUSTON APP CON
119.175 291.675
EFD ATIS
135.575 269.9
HOU D-ATIS
124.6
SGR ATIS ★
118.125
TME ATIS
119.525

HUMBLE
116.6 IAH :::
Chan 113



TSHRT
12000
Ldg all airports

041°
(19)
075°

IAH
154

BELLR
TURBOJETS:
12000 250K

NOTE: RADAR required.
NOTE: DME/DME/IRU or GPS equipped turbojet and turboprop aircraft landing HOU must file the BELLR (RNAV) STAR.
NOTE: DME required.

NOTE: Chart not to scale.

ARRIVAL ROUTE DESCRIPTION

... from over BELLR on IAH R-221 to cross TSHRT at 12000. From TSHRT fly heading 075° for vectors to final approach course.

SC-5, 08 AUG 2024 to 05 SEP 2024

SC-5, 08 AUG 2024 to 05 SEP 2024