

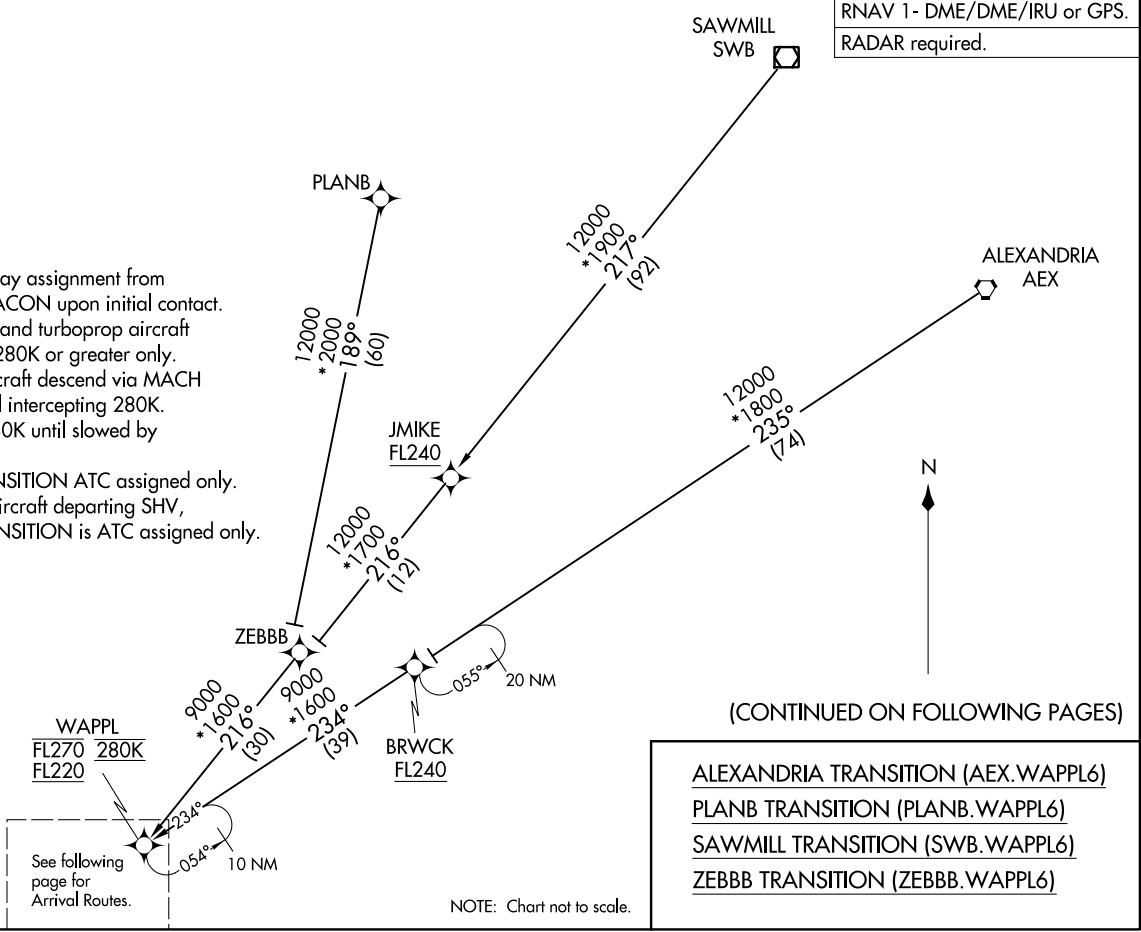
(WAPPL.WAPPL6) 070CT21

WAPPL SIX ARRIVAL (RNAV) Transition Routes

HOUSTON, TEXAS

HOUSTON APP CON
120.05 379.1
EFD ATIS
135.575 269.9
HOU D-ATIS
124.6
SGR ATIS ★
118.125
TME ATIS
119.525

- NOTE: Expect runway assignment from Houston TRACON upon initial contact.
- NOTE: For turbojet and turboprop aircraft capable of 280K or greater only.
- NOTE: Turbojet aircraft descend via MACH number until intercepting 280K. Maintain 280K until slowed by the STAR.
- NOTE: ZEBBB TRANSITION ATC assigned only.
- NOTE: Except for aircraft departing SHV, PLANB TRANSITION is ATC assigned only. Do not file.



RNAV 1 - DME/DME/IRU or GPS.
RADAR required.

(WAPPL.WAPPL6) 21280

AL-198 (FAA)

HOUSTON, TEXAS

WAPPL SIX ARRIVAL (RNAV) Arrival Routes
 (WAPPL, WAPPL6) 07OCT21

Arrival Routes

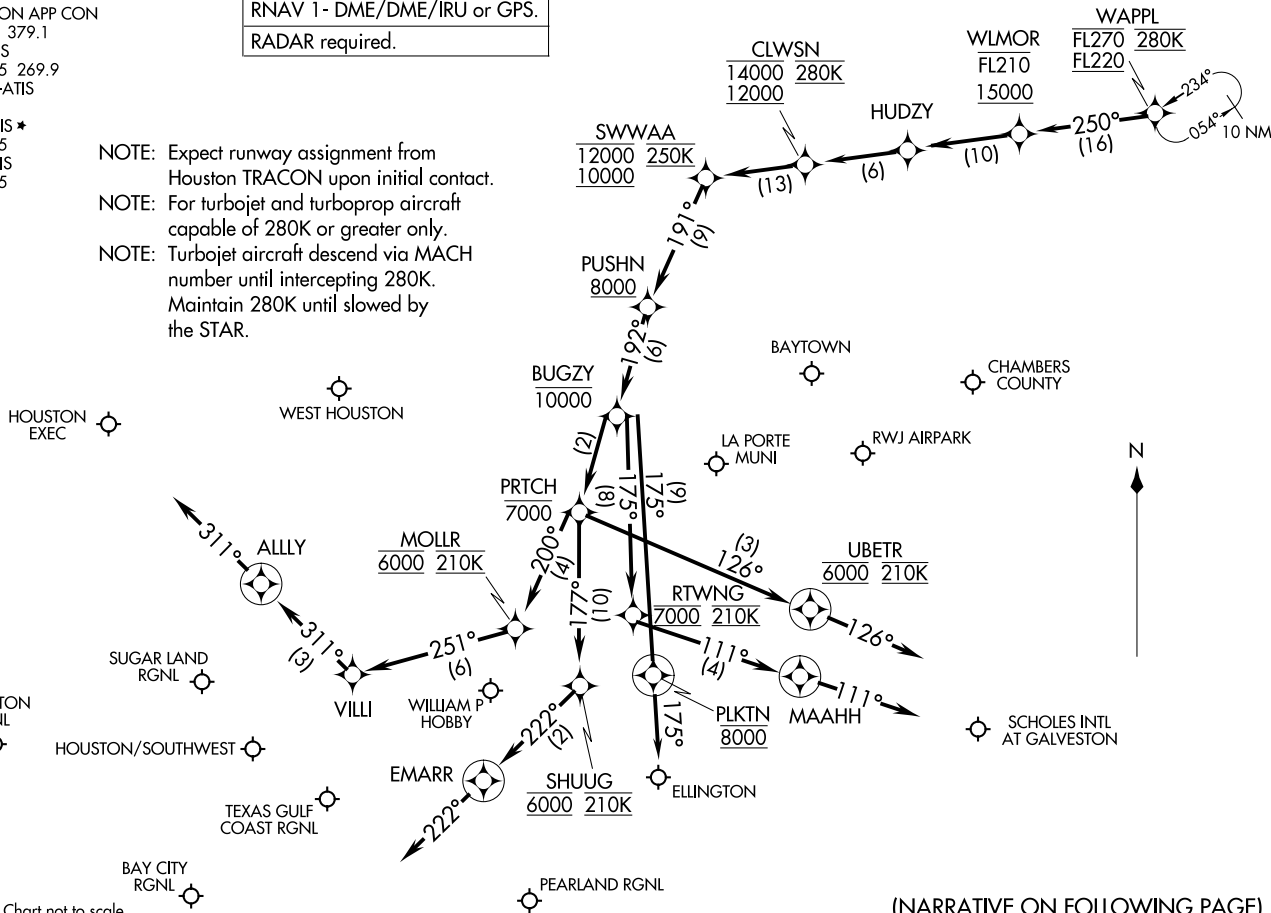
HOUSTON, TEXAS

HOUSTON APP CON
 120.05 379.1
 EFD ATIS
 135.575 269.9
 HOU D-ATIS
 124.6
 SGR ATIS *
 118.125
 TME ATIS
 119.525

RNAV 1 - DME/DME/IRU or GPS.
 RADAR required.

- NOTE: Expect runway assignment from Houston TRACON upon initial contact.
- NOTE: For turbojet and turboprop aircraft capable of 280K or greater only.
- NOTE: Turbojet aircraft descend via MACH number until intercepting 280K. Maintain 280K until slowed by the STAR.

NOTE: Chart not to scale.



(NARRATIVE ON FOLLOWING PAGE)

WAPPL SIX ARRIVAL (RNAV) Arrival Routes
 (WAPPL, WAPPL6) 23054

Arrival Routes

HOUSTON, TEXAS

AL-198 (FAA)

ARRIVAL ROUTE DESCRIPTION

From WAPPL on track 250° to cross WLMOR between 15000 and FL210, then on track 250° to HUDZY, then on track 250° to cross CLWSN between 12000 and 14000 and at 280K, then on track 250° to cross SWWAA between 10000 and 12000 and at 250K, then on track 191° to cross PUSHN at or above 8000.

LANDING HOU RUNWAY 4: From PUSHN on track 192° to cross BUGZY at or below 10000, then on track 192° to cross PRITCH at or below 7000, then on track 177° to cross SHUUG at 6000 and at 210K, then on track 222° to EMARR, then on track 222°. Expect RADAR vectors to final approach course.

LANDING HOU RUNWAYS 13L/R: From PUSHN on track 192° to cross BUGZY at or below 10000, then on track 192° to cross PRITCH at or below 7000, then on track 200° to cross MOLLR at 6000 and at 210K, then on track 251° to VILLI, then on track 311° to ALLY, then on track 311°. Expect RADAR vectors to final approach course.

LANDING HOU RUNWAY 22: From PUSHN on track 192° to cross BUGZY at or below 10000, then on track 175° to cross RTWNG at 7000 and at 210K, then on track 111° to MAAHH, then on track 111°. Expect RADAR vectors to final approach course.

LANDING HOU RUNWAYS 31L/R: From PUSHN on track 192° to cross BUGZY at or below 10000, then on track 192° to cross PRITCH at or below 7000, then on track 126° to cross UBETR at 6000 and at 210K, then on track 126°. Expect RADAR vectors to final approach course.

LANDING GLS, TME, AXH, HPY, T41, 54T, T00, SGR, ARM, BYY, LBX, LVJ, IWS, EFD: From WAPPL on track 250° to cross WLMOR between 15000 and FL210, then on track 250° to HUDZY, then on track 250° to cross CLWSN between 12000 and 14000 and at 280K, then on track 250° to cross SWWAA between 10000 and 12000 and at 250K, then on track 191° to cross PUSHN at or above 8000, then on track 192° to cross BUGZY at or below 10000, then on track 175° to cross PLKTN at 8000, then on track 175°. Expect RADAR vectors to final approach course.