

(BAINY.BAINY3) 17173

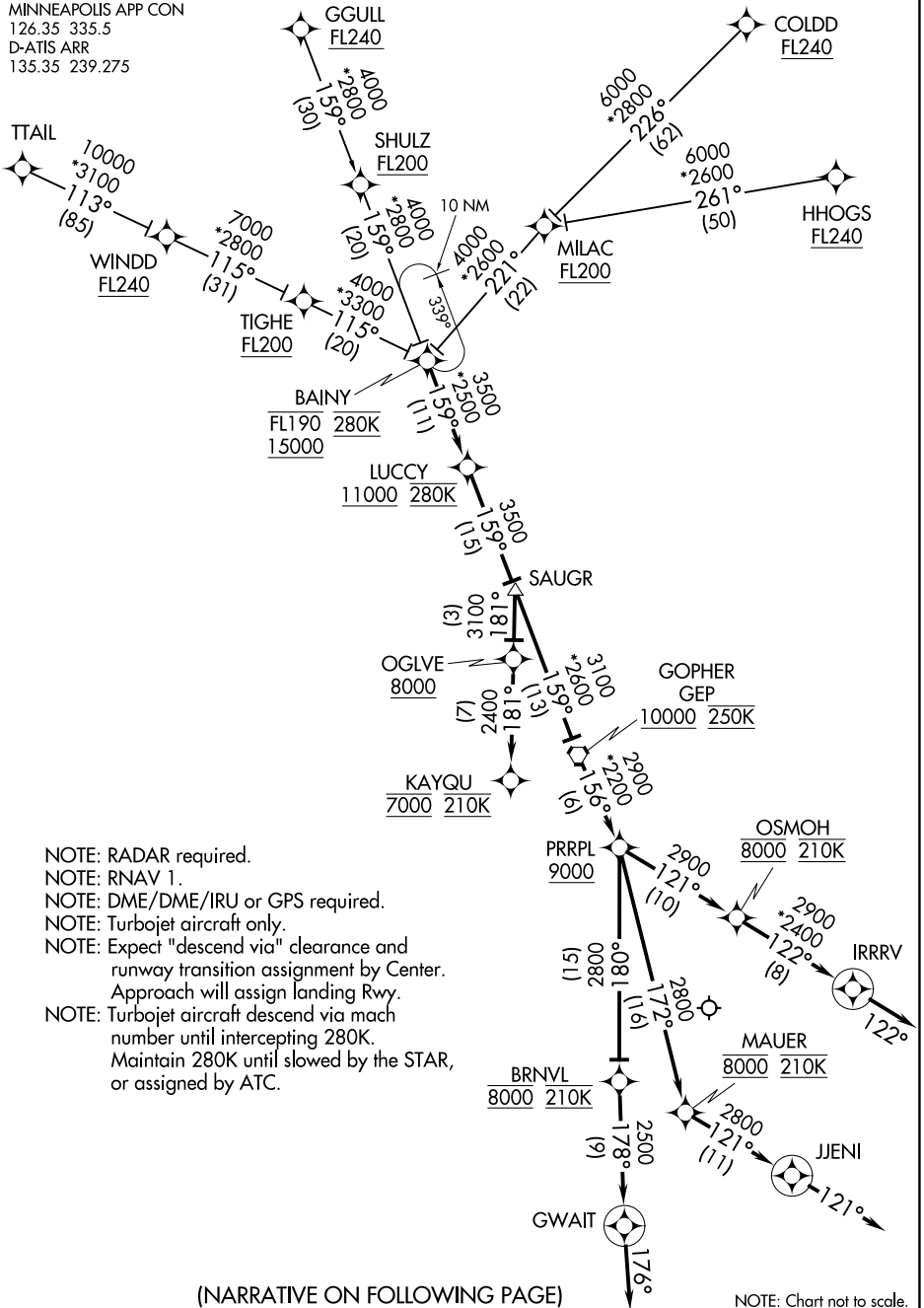
MINNEAPOLIS-ST PAUL INTL/WOLD-CHAMBERLAIN (MSP)

BAINY THREE ARRIVAL (RNAV)

AL-264 (FAA)

MINNEAPOLIS, MINNESOTA

MINNEAPOLIS APP CON
126.35 335.5
D-ATIS ARR
135.35 239.275



- NOTE: RADAR required.
- NOTE: RNAV 1.
- NOTE: DME/DME/IRU or GPS required.
- NOTE: Turbojet aircraft only.
- NOTE: Expect "descend via" clearance and runway transition assignment by Center. Approach will assign landing Rwy.
- NOTE: Turbojet aircraft descend via mach number until intercepting 280K. Maintain 280K until slowed by the STAR, or assigned by ATC.

(NARRATIVE ON FOLLOWING PAGE)

NOTE: Chart not to scale.

BAINY THREE ARRIVAL (RNAV)

MINNEAPOLIS, MINNESOTA

(BAINY.BAINY3) 05JAN17

MINNEAPOLIS-ST PAUL INTL/WOLD-CHAMBERLAIN (MSP)

NC-1, 08 AUG 2024 to 05 SEP 2024

NC-1, 08 AUG 2024 to 05 SEP 2024

ARRIVAL ROUTE DESCRIPTION

COLDD TRANSITION (COLDD.BAINY3)

GGULL TRANSITION (GGULL.BAINY3)

HHOGS TRANSITION (HHOGS.BAINY3)

MILAC TRANSITION (MILAC.BAINY3)

SHULZ TRANSITION (SHULZ.BAINY3)

TIGHE TRANSITION (TIGHE.BAINY3)

TTAIL TRANSITION (TTAIL.BAINY3)

WINDD TRANSITION (WINDD.BAINY3)

From BAINY on track 159° to cross LUCCY at or above 11000 and at 280K, then on track 159° to SAUGR.

LANDING RUNWAYS 4, 17, 22, 30R: From SAUGR on track 159° to cross GEP VORTAC at or above 10000 and at 250K, then on track 156° to cross PRRPL at or above 9000, then on track 121° to cross OSMOH at 8000 and at 210K, then on track 122° to IRRRV, then on track 122°. Expect RADAR vectors to final approach course.

LANDING RUNWAYS 12L/R: From SAUGR on track 181° to cross OGLVE at or above 8000, then on track 181° to cross KAYQU at 7000 and at 210K. Expect RNAV (RNP), RNAV (GPS), or ILS approach or RADAR vectors to final approach course.

LANDING RUNWAY 30L: From SAUGR on track 159° to cross GEP VORTAC at or above 10000 and at 250K, then on track 156° to cross PRRPL at or above 9000, then on track 172° to cross MAUER at 8000 and at 210K, then on track 121° to JJENI, then on track 121°. Expect RADAR vectors to final approach course.

LANDING RUNWAY 35: From SAUGR on track 159° to cross GEP VORTAC at or above 10000 and at 250K, then on track 156° to cross PRRPL at or above 9000, then on track 180° to cross BRNVL at 8000 and at 210K, then on track 178° to GWAIT, then on track 176°. Expect RADAR vectors to final approach course.

NC-1, 08 AUG 2024 to 05 SEP 2024

NC-1, 08 AUG 2024 to 05 SEP 2024