

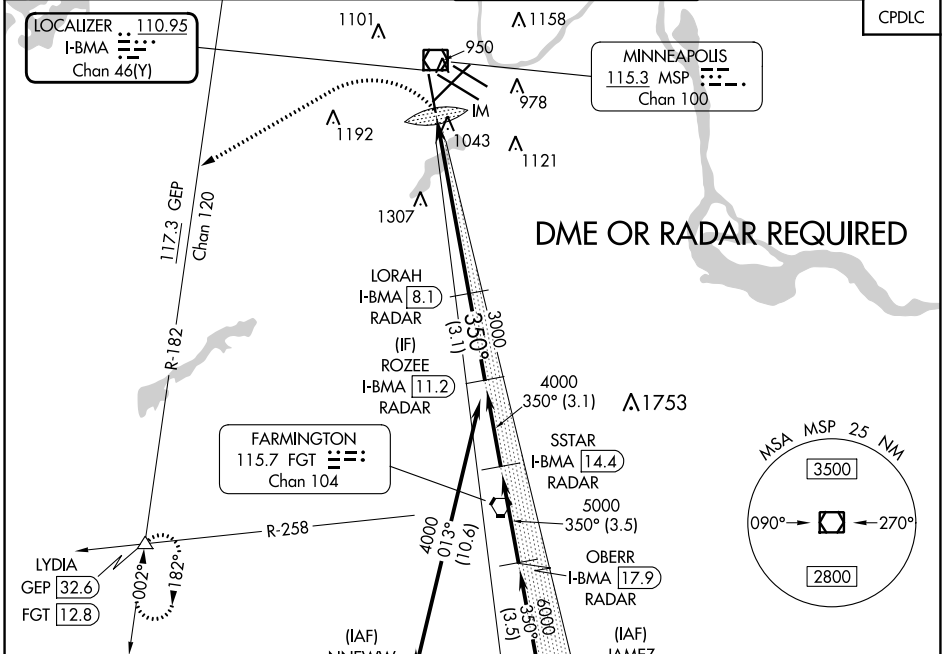
LOC/DME I-BMA 110.95 Chan 46 (Y)	APP CRS 350°	Rwy ldg TDZE Apt Elev	8000 834 842
--	------------------------	-----------------------------	---

ILS V RWY 35 (CONVERGING)

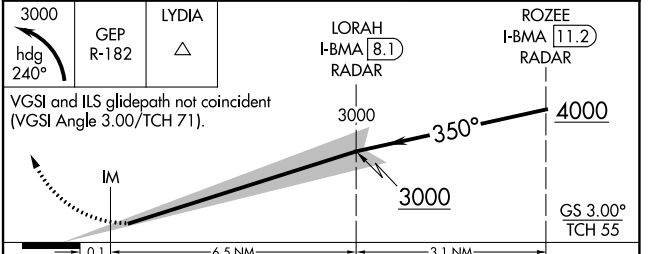
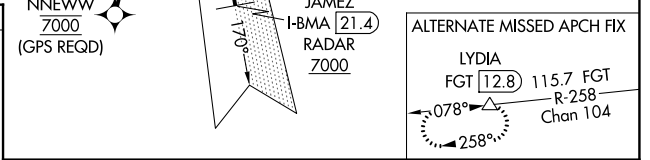
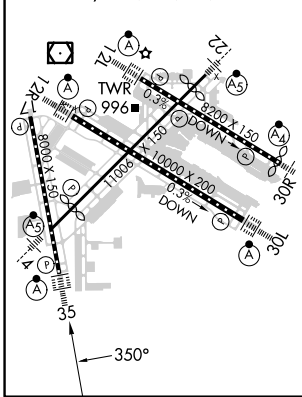
MINNEAPOLIS-ST PAUL INTL/WOLD-CHAMBERLAIN (MSP)

<p>▽ Inop table does not apply. △NA No autoland on ILS V RWY 35 (CONVERGING). Simultaneous approach authorized.</p>	<p>ALSF-2 A</p>	<p>MISSED APPROACH: Climbing left turn to 3000 on heading 240° and on GEP VORTAC R-182 to LYDIA INT/GEOP 32.6 DME and hold.</p>
---	----------------------------	---

D-ATIS ARR 135.35 239.275 DEP 120.8	MINNEAPOLIS APP CON 118.725 335.65 (Rwy 35) 119.3 335.65 (12L-30R, 4-22, 17) 126.95 335.65 (12R-30L)	MINNEAPOLIS TOWER 123.675 273.55 (17-35) 123.95 273.55 (12L-30R) 126.7 273.55 (12R-30L, 4-22)	GND CON N 121.8 348.6 S 121.9 348.6 W 127.925 348.6	CLNC DEL 133.2
---	--	---	---	--------------------------



ELEV 842	D	TDZE 834
HIRL all Rwys REL Rwy 17 TDZ/CL Rwys 12L, 12R, 30L, and 35		



CATEGORY	A	B	C	D	E
S-ILS 35	1684-3 850 (900-3)				

NC-1, 08 AUG 2024 to 05 SEP 2024

NC-1, 08 AUG 2024 to 05 SEP 2024