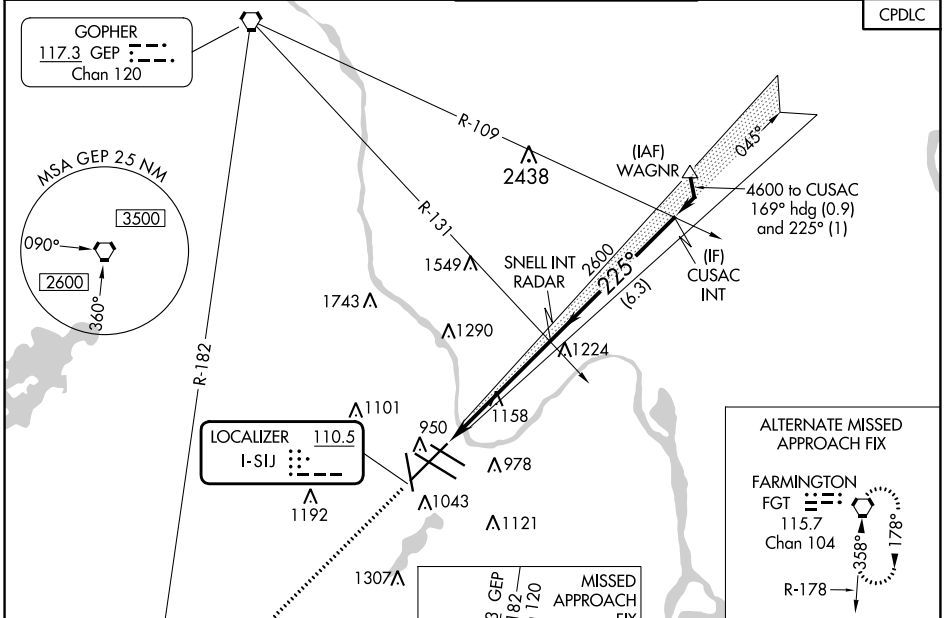


LOC I-SIJ <b>110.5</b>	APP CRS <b>225°</b>	Rwy ldg <b>10006</b> TDZE <b>828</b> Apt Elev <b>842</b>
---------------------------	------------------------	--

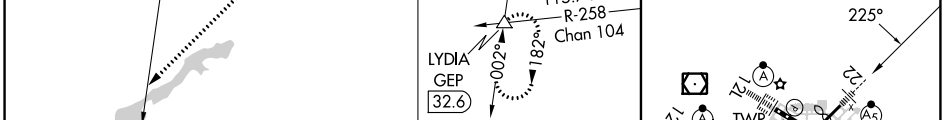
# LOC RWY 22

MINNEAPOLIS-ST PAUL INTL/WOLD-CHAMBERLAIN (MSP)

	Rwy 22 helicopter visibility reduction below RVR 4000 NA. For inop ALS, increase S-22 Cat A and B visibility to RVR 5500, and Cat E visibility to 1 3/4 SM.	MALS R 	MISSED APPROACH: Climb to 3000 on heading 225° and GEP VORTAC R-182 to LYDIA INT/GEP 32.6 DME and hold.	CLNC DEL <b>133.2</b>  CPDLC
	D-ATIS ARR <b>135.35 239.275</b> DEP <b>120.8</b>	MINNEAPOLIS APP CON <b>118.725 335.65</b> (Rwy 35) <b>119.3 335.65</b> (12L-30R, 4-22, 17) <b>126.95 335.65</b> (12R-30L)	MINNEAPOLIS TOWER <b>123.675 273.55</b> (17-35) <b>123.95 273.55</b> (12L-30R) <b>126.7 273.55</b> (12R-30L, 4-22)	



ELEV 842	<b>D</b> TDZE 828
----------	-------------------



3000	GEP R-182	LYDIA					
			SNELL INT RADAR	CUSAC INT			
			4600	2600			
			5.4 NM	6.3 NM			
CATEGORY	A	B	C	D	E		
S-22	1420/40	592 (600-3/4)	1420-1 1/4		592 (600-1 1/4)		
<b>C</b> CIRCLING	1420-1	578 (600-1)	1460-1 3/4	1620-2 1/2	1800-3		
			618 (700-1 3/4)	778 (800-2 1/2)	958 (1000-3)		
			Knots			60	90
			Min:Sec			5:24	3:36
						2:42	2:10
						1:48	
			FAF to MAP 5.4 NM				
			HIREL all Rwys REIL Rwy 17 TDZ/CL Rwys 12L, 12R, 30L, and 35				

# LOC RWY 22

NC-1, 08 AUG 2024 to 05 SEP 2024

NC-1, 08 AUG 2024 to 05 SEP 2024