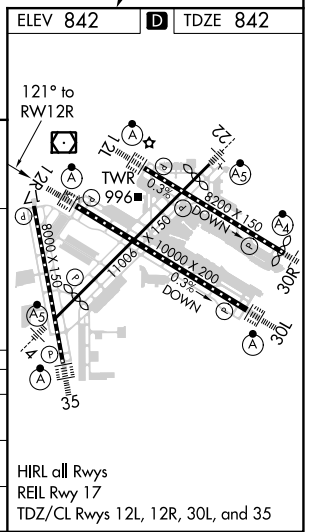
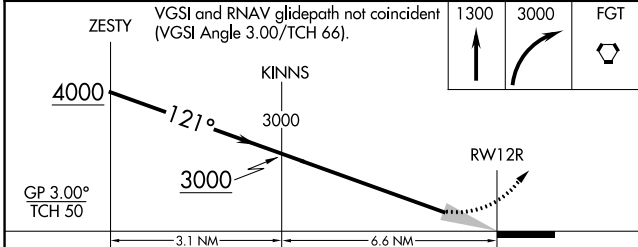
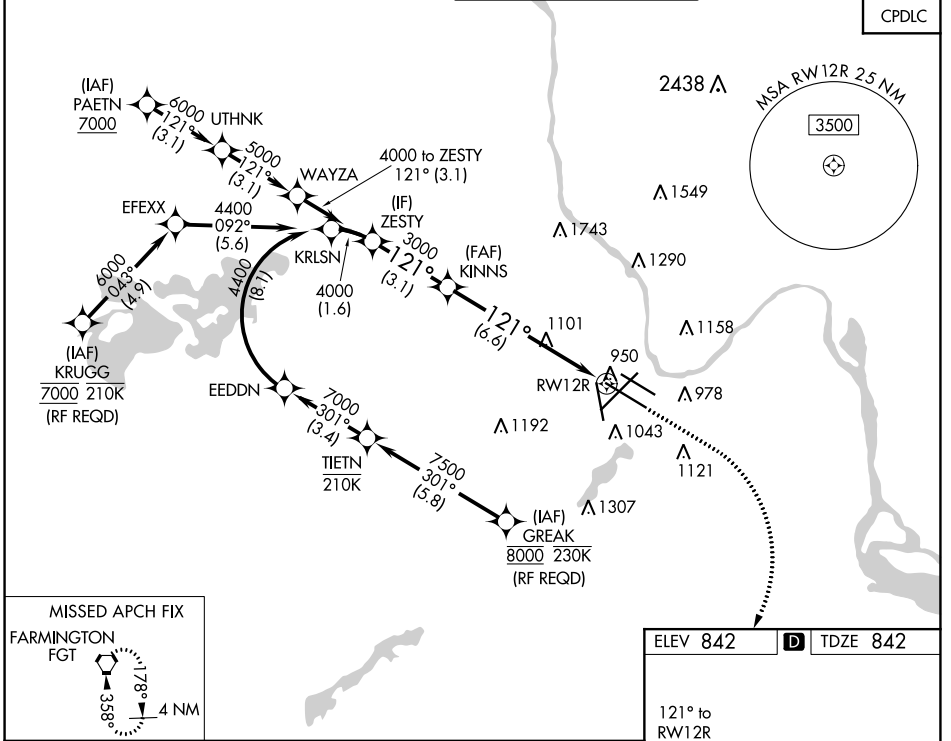


APP CRS	Rwy Idg	10000
121°	TDZE	842
	Apt Elev	842

RNAV (RNP) Y RWY 12R

MINNEAPOLIS-ST PAUL INTL/WOLD-CHAMBERLAIN (MSP)

▼ For uncompensated Baro-VNAV systems, procedure NA below -20°C (-4°F) or above 54°C (130°F). Simultaneous approach authorized with Rwy 12L. GPS required. For inop ALS, increase RNP 0.15 all Cats visibility to RVR 6000.	ALSF-2		MISSED APPROACH: Climb to 1300 then climbing right turn to 3000 direct FGT VORTAC and hold.	
	D-ATIS ARR 135.35 239.275 DEP 120.8	MINNEAPOLIS APP CON 118.725 335.65 (Rwy 35) 119.3 335.65 (12L-30R, 4-22, 17) 126.95 335.65 (12R-30L)	MINNEAPOLIS TOWER 123.675 273.55 (17-35) 123.95 273.55 (12L-30R) 126.7 273.55 (12R-30L, 4-22)	GND CON N 121.8 348.6 S 121.9 348.6 W 127.925 348.6



CATEGORY	A	B	C	D
RNP 0.15 DA		1191/40	349 (400-¾)	
RNP 0.30 DA		1251/45	409 (500-7/8)	

AUTHORIZATION REQUIRED

NC-1, 08 AUG 2024 to 05 SEP 2024

NC-1, 08 AUG 2024 to 05 SEP 2024