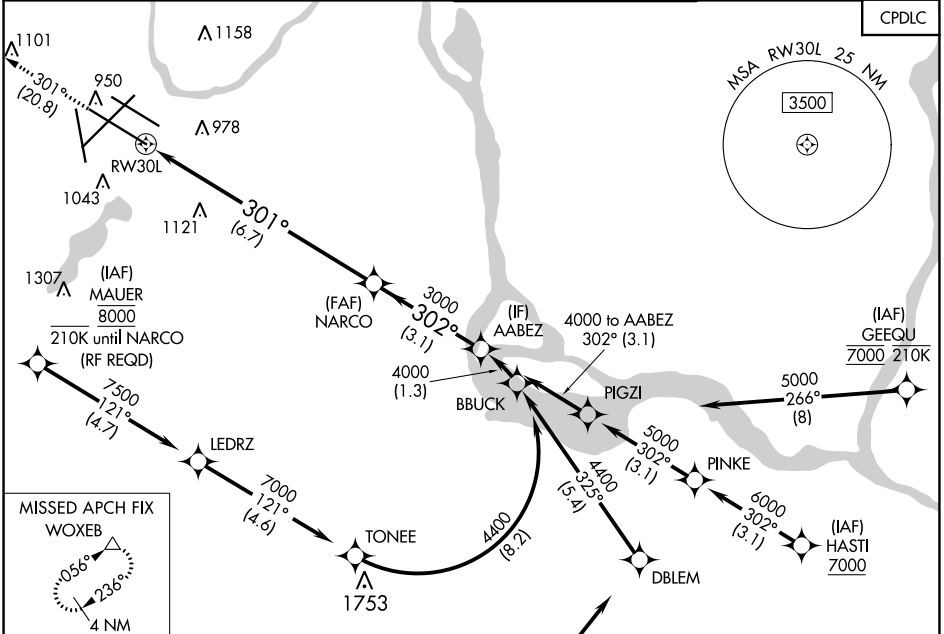


APP CRS 301°	Rwy Idg 10000 TDZE 823 Apt Elev 842
------------------------	--

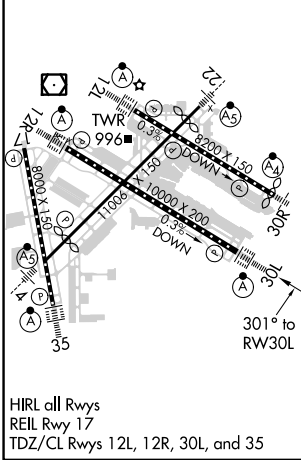
RNAV (RNP) Y RWY 30L

MINNEAPOLIS-ST PAUL INTL/WOLD-CHAMBERLAIN (MSP)

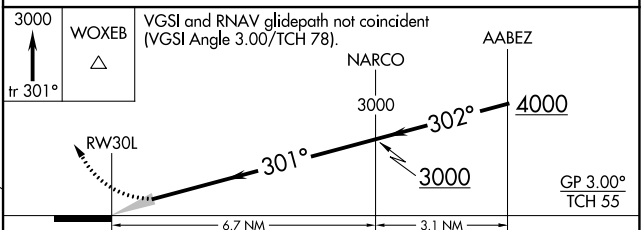
▼ For uncompensated Baro-VNAV systems, procedure NA below -19°C (-2°F) or above 54°C (130°F). GPS required. Simultaneous approaches authorized with Rwy 30R and ILS V RWY 35 (CONVERGING).	ALSF-2 	MISSED APPROACH: Climb to 3000 on track 301° to WOXEB and hold.	
		D-ATIS ARR 135.35 239.275 DEP 120.8	MINNEAPOLIS APP CON 118.725 335.65 (Rwy 35) 119.3 335.65 (12L-30R, 4-22, 17) 126.95 335.65 (12R-30L)
			CLNC DEL 133.2



ELEV 842	D	TDZE 823
----------	----------	----------



HIRL all Rwys
 REIL Rwy 17
 TDZ/CL Rwys 12L, 12R, 30L, and 35



CATEGORY	A	B	C	D
RNP 0.30 DA	1150/30 327 (400-%)			

AUTHORIZATION REQUIRED

NC-1, 08 AUG 2024 to 05 SEP 2024

NC-1, 08 AUG 2024 to 05 SEP 2024