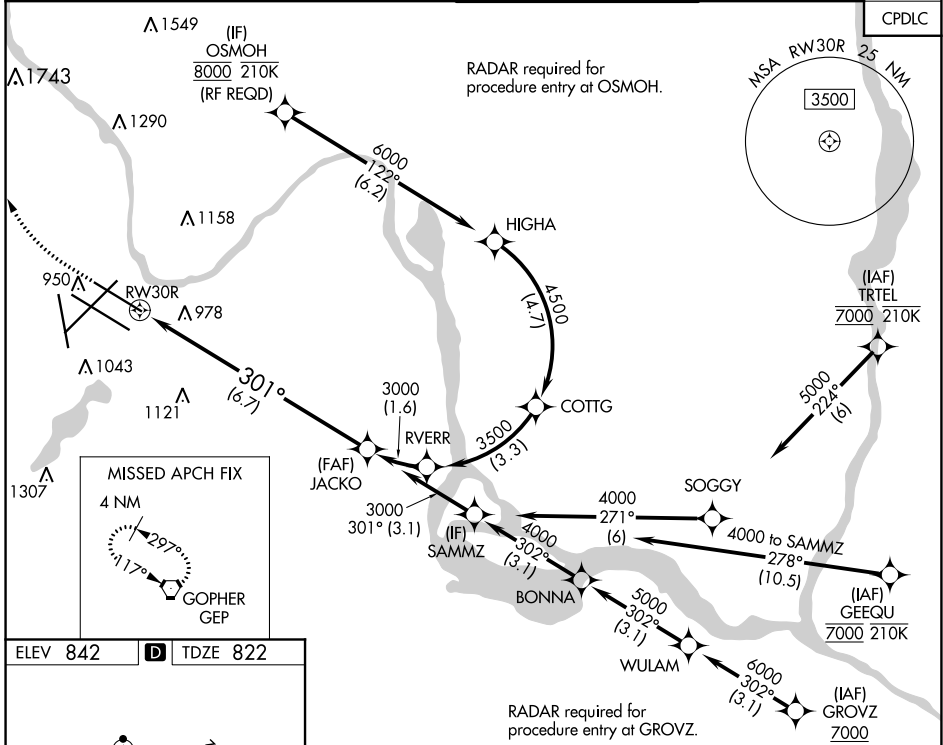


APP CRS	Rwy Idg	8000
301°	TDZE	822
	Apt Elev	842

RNAV (RNP) Y RWY 30R

MINNEAPOLIS-ST PAUL INTL/WOLD-CHAMBERLAIN (MSP)

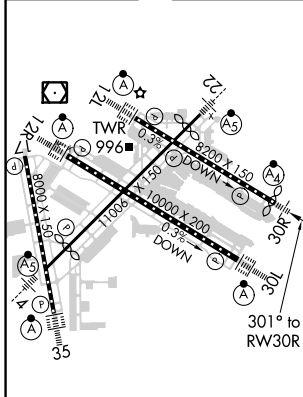
<p>▼ For uncompensated Baro-VNAV systems, procedure NA below -1°C (-2°F) or above 54°C (130°F). Simultaneous approach authorized with Rwy 30L and ILS V RWY 35 (CONVERGING). GPS required. For inop ALS, increase RNP 0.15 all Cats visibility to RVR 4500 and RNP 0.30 Cat D visibility to 1½ SM.</p>	<p>MALSF</p>	<p>MISSED APPROACH: Climb to 1300 then climbing right turn to 3000 direct GEP VORTAC and hold.</p>	
		<p>D-ATIS</p> <p>ARR 135.35 239.275</p> <p>DEP 120.8</p>	<p>MINNEAPOLIS APP CON</p> <p>118.725 335.65 (Rwy 35)</p> <p>119.3 335.65 (12L-30R, 4-22, 17)</p> <p>126.95 335.65 (12R-30L)</p>



NC-1, 08 AUG 2024 to 05 SEP 2024

NC-1, 08 AUG 2024 to 05 SEP 2024

ELEV 842	D	TDZE 822
----------	----------	----------



1300	3000	GEP	VGSI and RNAV glidepath not coincident (VGSI Angle 3.00/TCH 71). See planview for multiple IF locations.	JACKO	3000
					GP 3.00° TCH 55

HIRL all Rwys
REIL Rwy 17
TDZ/CL Rwys 12L, 12R, 30L, and 35

AUTHORIZATION REQUIRED