

# SKETR FIVE ARRIVAL

MINNEAPOLIS APP CON  
126.95 335.5  
D-ATIS ARR  
135.35 239.275

MINNEAPOLIS  
115.3 MSP  
Chan 100

NOTE: RADAR required.  
NOTE: DME required.  
NOTE: Chart not to scale.

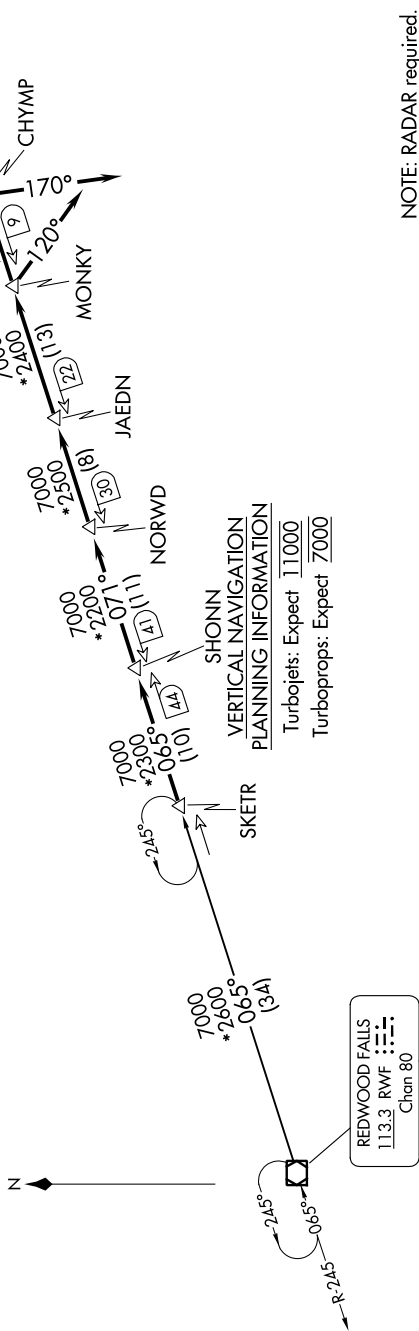
## ARRIVAL ROUTE DESCRIPTION

**REDWOOD FALLS TRANSITION (RWF.SKETR5):** From over RWF VOR/DME on RWF R-065 to SKETR/34 DME. Thence . . . .

. . . . From over SKETR/RWF 34 DME via RWF R-065 to SHONN/RWF 44 DME, then via MSP R-251 to NORWD/MSP 30 DME, then via MSP R-251 to JAEDN/MSP 22 DME, then via MSP R-251 to MONKY/MSP 9 DME, thence . . . .

**LANDING MSP RUNWAY 30L/R:** . . . . depart MONKY/MSP 9 DME heading 120° for RADAR vectors to final approach course.

**LANDING MSP RUNWAY 35:** . . . . depart MONKY/MSP 9 DME via MSP R-251 to CHYMP/MSP 8 DME, then via heading 170° for RADAR vectors to final approach course.  
**ALL OTHER RUNWAYS:** . . . . via RADAR vectors to final approach course.



VERTICAL NAVIGATION  
PLANNING INFORMATION  
Turbojets: Expect 11000  
Turboprops: Expect 7000

NC-1, 08 AUG 2024 to 05 SEP 2024

NC-1, 08 AUG 2024 to 05 SEP 2024

# SKETR FIVE ARRIVAL

(SKETR.SKETR5) 10JAN13