

BLYTHE FIVE ARRIVAL

AL-322 (FAA)

PHOENIX, ARIZONA

SW-4, 08 AUG 2024 to 05 SEP 2024

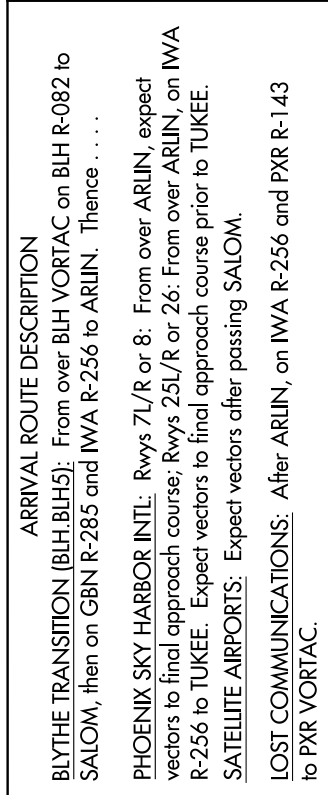
ARRIVAL ROUTE DESCRIPTION

BLYTHE TRANSITION (BLH.BLH5): From over BLH VORTAC on BLH R-082 to SALOM, then on GBN R-285 and IWA R-256 to ARLIN. Thence

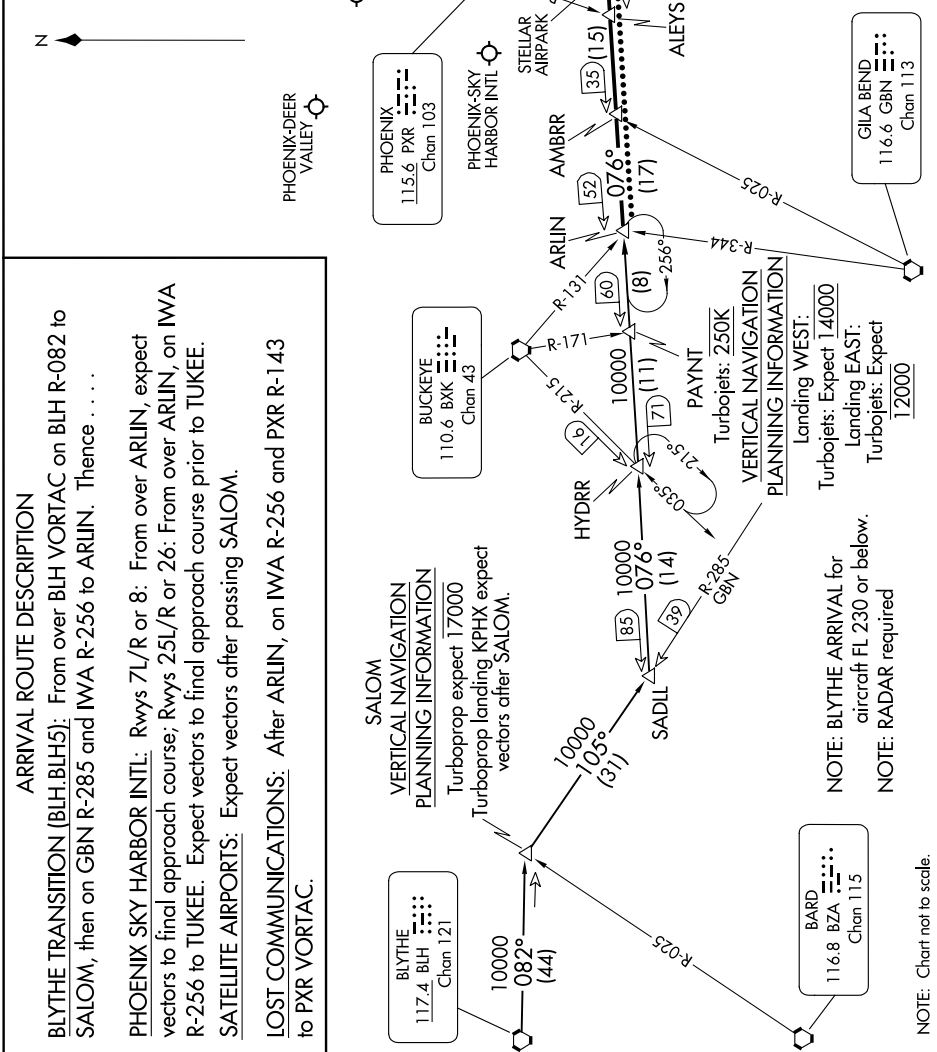
PHOENIX SKY HARBOR INTL: Rwy 7L/R or 8: From over ARLIN, expect vectors to final approach course; Rwy 25L/R or 26: From over ARLIN, on IWA R-256 to TUKEE. Expect vectors to final approach course prior to TUKEE.

SATELLITE AIRPORTS: Expect vectors after passing SALOM.

LOST COMMUNICATIONS: After ARLIN, on IWA R-256 and PXR R-143 to PXR VORTAC.



- PHOENIX APP CON 124.1 256.9
- PHOENIX TOWER 118.7 278.8 (Rwy 8-26)
- 120.9 254.3 (Rwy 7L-25R, 7R-25L)
- PHOENIX GND CON 119.75 269.2
- CHD ATIS 128.325
- FFZ ATIS 118.25
- DVT ATIS 126.5
- IWA ATIS * 133.5 270.275
- PHX D-ATIS 127.575
- SDL ATIS * 118.6



SALOM
VERTICAL NAVIGATION
PLANNING INFORMATION
Turbojet expect 17000
Turbojet landing KPHX expect vectors after SALOM.

**VERTICAL NAVIGATION
PLANNING INFORMATION**
Landing WEST:
Turbojets: Expect 14000
Landing EAST:
Turbojets: Expect 12000

NOTE: BLYTHE ARRIVAL for aircraft FL 230 or below.
NOTE: RADAR required

NOTE: Chart not to scale.

BLYTHE FIVE ARRIVAL

PHOENIX, ARIZONA

SW-4, 08 AUG 2024 to 05 SEP 2024