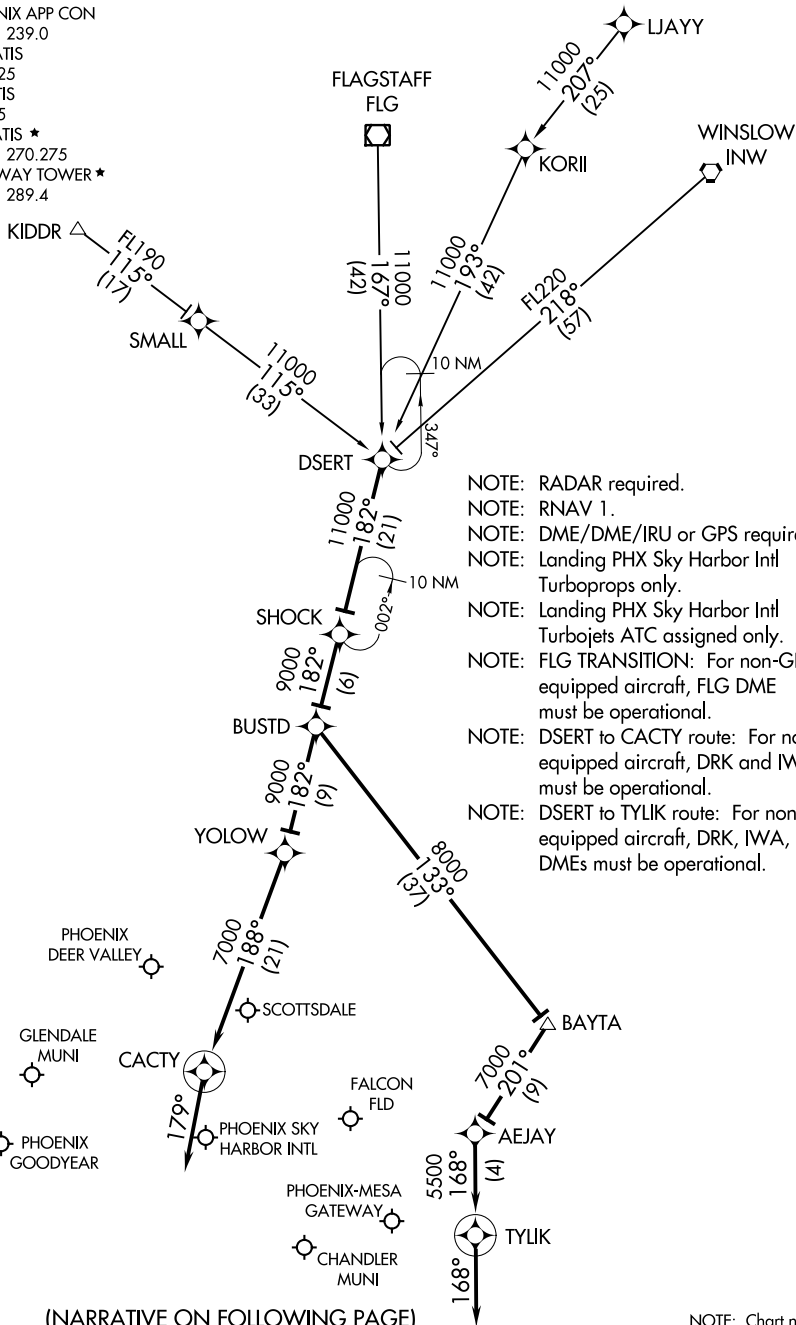


PHOENIX APP CON
 120.7 239.0
 CHD ATIS
 128.325
 FFZ ATIS
 118.25
 IWA ATIS *
 133.5 270.275
 GATEWAY TOWER *
 120.6 289.4



- NOTE: RADAR required.
- NOTE: RNAV 1.
- NOTE: DME/DME/IRU or GPS required.
- NOTE: Landing PHX Sky Harbor Intl Turboprops only.
- NOTE: Landing PHX Sky Harbor Intl Turbojets ATC assigned only.
- NOTE: FLG TRANSITION: For non-GPS equipped aircraft, FLG DME must be operational.
- NOTE: DSERT to CACTY route: For non-GPS equipped aircraft, DRK and IWA DMEs must be operational.
- NOTE: DSERT to TYLIK route: For non-GPS equipped aircraft, DRK, IWA, and PXR DMEs must be operational.

(NARRATIVE ON FOLLOWING PAGE)

NOTE: Chart not to scale.

ARRIVAL ROUTE DESCRIPTION

FLAGSTAFF TRANSITION (FLG.DSERT2)

KIDDR TRANSITION (KIDDR.DSERT2)

LJAYY TRANSITION (LJAYY.DSERT2)

WINSLOW TRANSITION (INW.DSERT2)

From DSERT on track 182° to SHOCK, then on track 182° to BUSTD.

LANDING AT KDVT/KSDL/KGEU/KFFZ/KCHD/KGYR/KPHX:

From BUSTD on track 182° to YOLOW, then on track 188° to CACTY then on track 179°. Expect RADAR vectors.

LANDING AT KIWA: From BUSTD on track 133° to BAYTA, then on track 201° to AEJAY, then on track 168° to TYLIK, then on track 168°. Expect RADAR vectors.

SW-4, 08 AUG 2024 to 05 SEP 2024

SW-4, 08 AUG 2024 to 05 SEP 2024