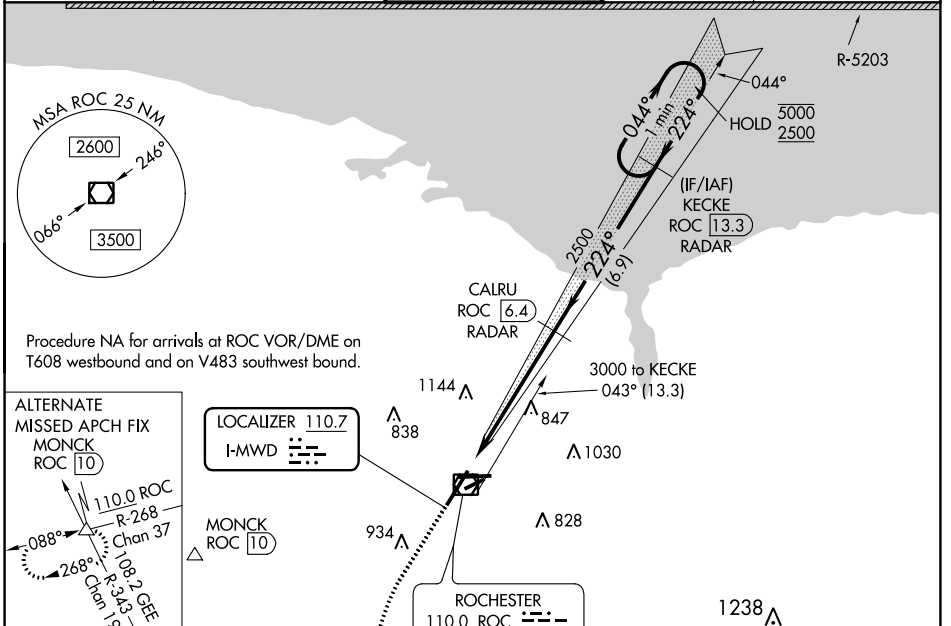


| | | |
|---------------------------|------------------------|------------------------|
| LOC I-MWD 110.7 | APP CRS 224° | Rwy Idg 8001 |
| | | TDZE 559 |
| | | Apt Elev 559 |

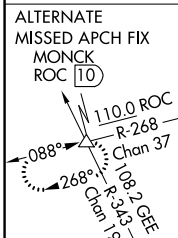
ILS or LOC RWY 22

FREDERICK DOUGLASS/GREATER ROCHESTER INTL (ROC)

| | | | | | | |
|--|--|------------------------|--|---|-------------------------|---------------------------------|
| DME or RADAR required. | | MALSR | | MISSED APPROACH: Climb to 1000 then climbing left turn to 4000 direct GEE VOR/DME and hold. | | |
| ▼ When R-5203 active hold in lieu NA. DME from ROC VOR/DME. ▲ DME use requires simultaneous reception of I-MWD and ROC DME. * RVR 1800 authorized with use of FD or AP or HUD to DA. | | ATIS 124.825 | ROCHESTER APP CON 119.55 269.6 | ROCHESTER TOWER 118.3 254.3 | GND CON 121.7 | CLNC DEL 118.8 343.65 |

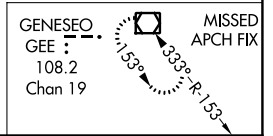


Procedure NA for arrivals at ROC VOR/DME on T608 westbound and on V483 southwest bound.

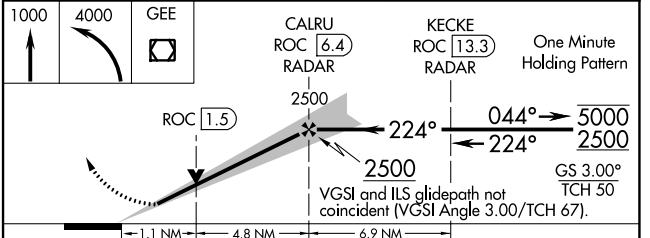


LOCALIZER 110.7 I-MWD

MONCK ROC 10



| | | | | | |
|---|----------|----------|------|------|------|
| ELEV 559 | D | TDZE 559 | | | |
| 224° | | | | | |
| TDZ/CL Rwy 4 REIL Rws 7, 10 and 25 MIRL Rwy 7-25 HIRL Rws 4-22 and 10-28 | | | | | |
| FAF to MAP 5.9 NM | | | | | |
| Knots | 60 | 90 | 120 | 150 | 180 |
| Min:Sec | 5:54 | 3:56 | 2:57 | 2:22 | 1:58 |



| | | | | |
|------------|----------------------|---------------|--------------------------------|------------------------|
| CATEGORY | A | B | C | D |
| S-ILS 22 * | 759/24 200 (200-1/2) | | | |
| S-LOC 22 | 980/24 | 421 (500-1/2) | 980/40 | 421 (500-3/4) |
| CIRCLING | 1060-1 | 501 (600-1) | 1460-2 3/4 901 (1000-2 3/4) | 1460-3 901 (1000-3) |

NE-2, 08 AUG 2024 to 05 SEP 2024

NE-2, 08 AUG 2024 to 05 SEP 2024