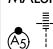


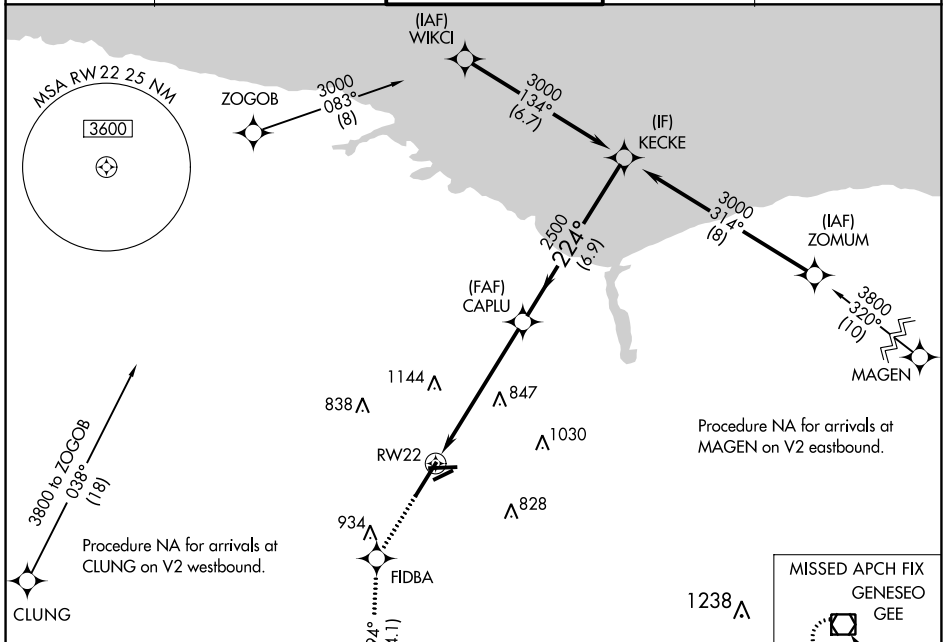
WAAS CH 73016 W22A	APP CRS 224°	Rwy Idg TDZE 559 Apt Elev 559
--	------------------------	---

RNAV (GPS) RWY 22

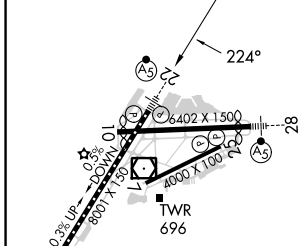
FREDERICK DOUGLASS/GREATER ROCHESTER INTL (ROC)

<p>▼ For uncompensated Baro-VNAV systems, LNAV/VNAV NA below -18°C (0°F) or above 54°C (130°F), DME/DME RNP-0,3 NA. **RVR 1800 authorized with use of FD or AP or HUD to DA.</p>	<p>MALSR </p>	<p>MISSED APPROACH: Climb to 4000 direct FIDBA and on track 194° to GEE VOR/DME and hold.</p>
--	---	---

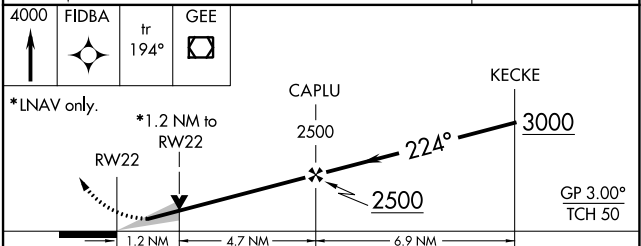
ATIS 124.825	ROCHESTER APP CON 119.55 269.6	ROCHESTER TOWER 118.3 254.3	GND CON 121.7	CLNC DEL 118.8 343.65
------------------------	--	---------------------------------------	-------------------------	---------------------------------



ELEV 559	D	TDZE 559
----------	----------	----------



<p>TDZ/CL Rwy 4 REIL Rwys 7, 10 and 25 MIRL Rwy 7-25 HIRL Rwys 10-28 and 4-22</p>



CATEGORY	A	B	C	D
LPV DA	**759/24		200 (200-½)	
LNAV/VNAV DA	859/25		300 (300-½)	
LNAV MDA	980/24	421 (500-½)	980/40	421 (500-¾)
C CIRCLING	1060-1	501 (600-1)	1500-2¾ 941 (1000-2¾)	1500-3 941 (1000-3)

NE-2, 08 AUG 2024 to 05 SEP 2024

NE-2, 08 AUG 2024 to 05 SEP 2024