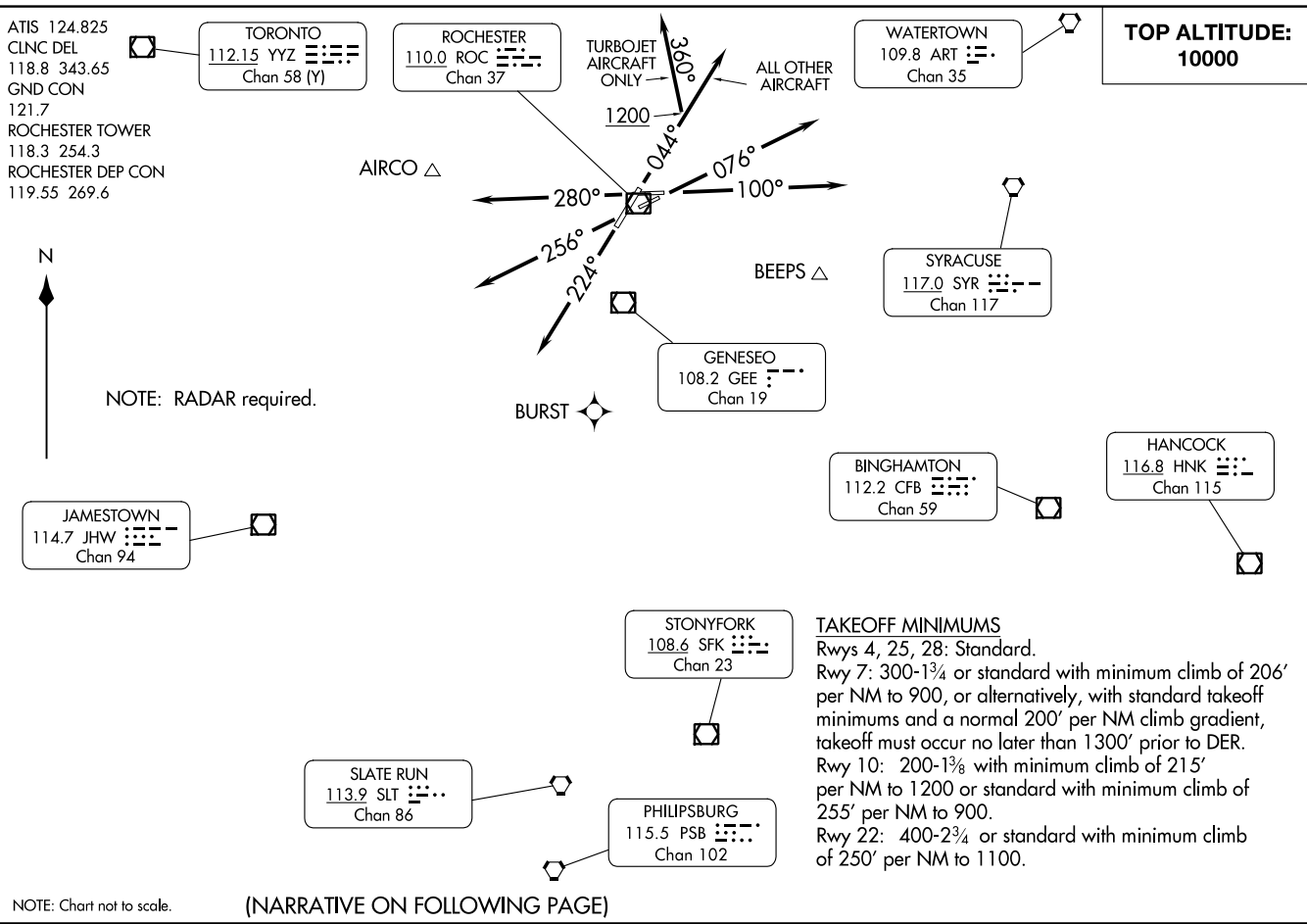


XEROX SEVEN DEPARTURE
(XEROX7.XEROX) 02DEC21

FREDERICK DOUGLASS/GREATER ROCHESTER INTL (ROC)
ROCHESTER, NEW YORK



(NARRATIVE ON FOLLOWING PAGE)

(XEROX7.XEROX) 23334
XEROX SEVEN DEPARTURE

FREDERICK DOUGLASS/GREATER ROCHESTER INTL (ROC)
AL-351 (FAA)
ROCHESTER, NEW YORK



DEPARTURE ROUTE DESCRIPTION

TAKEOFF RUNWAY 4: Turbojet aircraft only climb on heading 044° to 1200, then heading 360°, thence . . .

All other aircraft climb on heading 044°, thence . . .

TAKEOFF RUNWAY 7: Climb on heading 076°, thence . . .

TAKEOFF RUNWAY 10: Climb on heading 100°, thence . . .

TAKEOFF RUNWAY 22: Climb on heading 224°, thence . . .

TAKEOFF RUNWAY 25: Climb on heading 256°, thence . . .

TAKEOFF RUNWAY 28: Climb on heading 280°, thence . . .

. . . expect RADAR vectors to intercept filed/assigned route or enroute fix or navaid. Maintain 10000 or assigned lower altitude. Expect further clearance to requested altitude/flight level ten minutes after departure.

NE-2, 08 AUG 2024 to 05 SEP 2024

NE-2, 08 AUG 2024 to 05 SEP 2024