

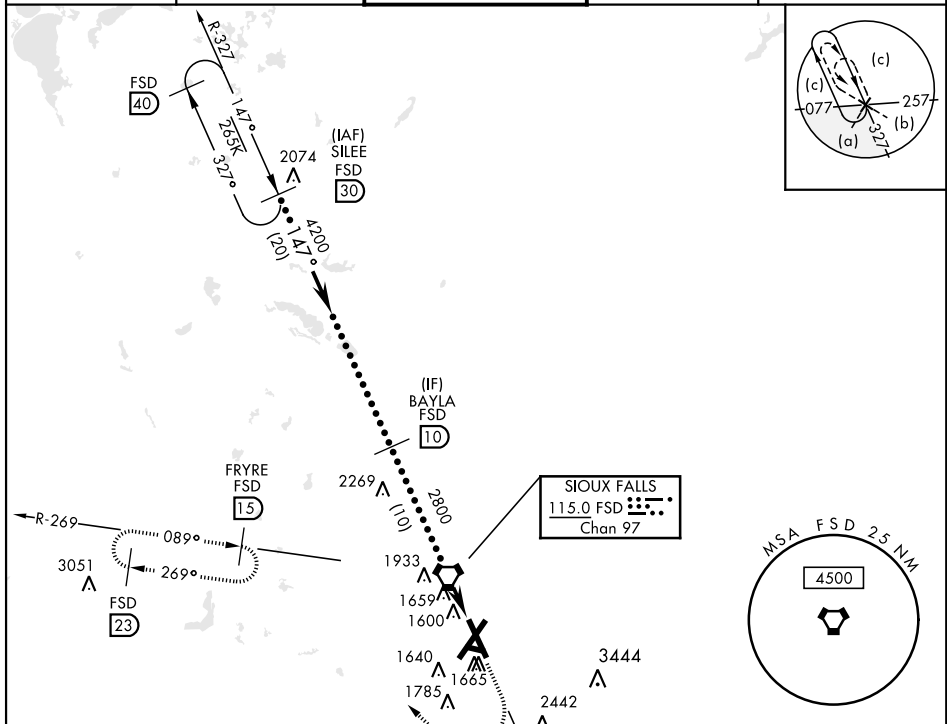
SIoux FALLS, SOUTH DAKOTA

HI-TACAN RWY 15

VORTAC FSD 115.0 Chan 97	APCH CRS 147°	Rwy Idg 8000 TDZE 1429 Arprt Elev 1430	AL-396 [USAF]	JOE FOSS FLD (KFSD)
--	-------------------------	---	---------------	---------------------

MISSED APPROACH: Climb to 5000 then right turn on heading 320° and FSD R-269 to FRYRE 15 DME and hold.

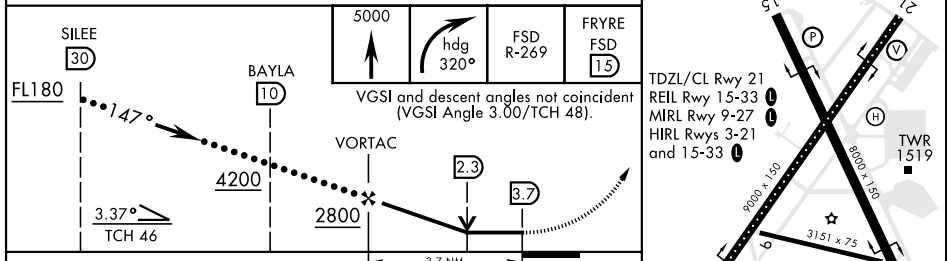
ATIS 126.6	SIoux FALLS APP CON 125.8 306.2	SIoux FALLS TOWER ★ 118.3(CTAF) 257.8	GND CON 121.9 348.6	ASR
----------------------	---	---	-------------------------------	-----



NC-1, 08 AUG 2024 to 05 SEP 2024

NC-1, 08 AUG 2024 to 05 SEP 2024

ELEV 1430	TDZE 1429
------------------	------------------



EMERG SAFE ALT 100 NM 4600	SILEE (30) BAYLA (10) VORTAC		
FL180	5000	4200	2800
1.47°	3.37° TCH 46	2.3	3.7
3.7 NM	VGSi and descent angles not coincident (VGSi Angle 3.00/TCH 48).		
TDZL/CL Rwy 21	REIL Rwy 15-33	MIRL Rwy 9-27	HIRL Rwys 3-21 and 15-33
8000 x 150	3151 x 75	8000 x 150	TWR 1519
1470	1470	1470	1470

SIoux FALLS, SOUTH DAKOTA 43° 35'N-96° 45'W JOE FOSS FLD (KFSD)

HI-TACAN RWY 15

Amtd 8C 04NOV21