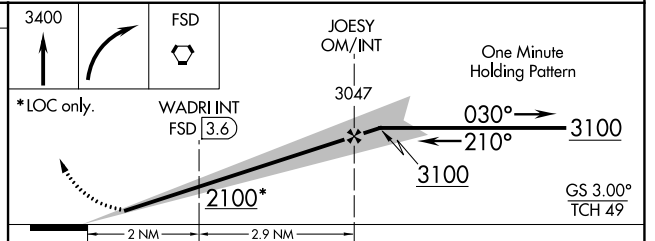
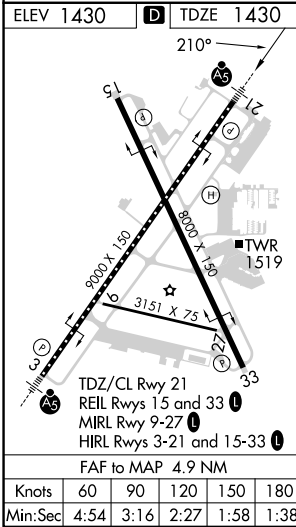
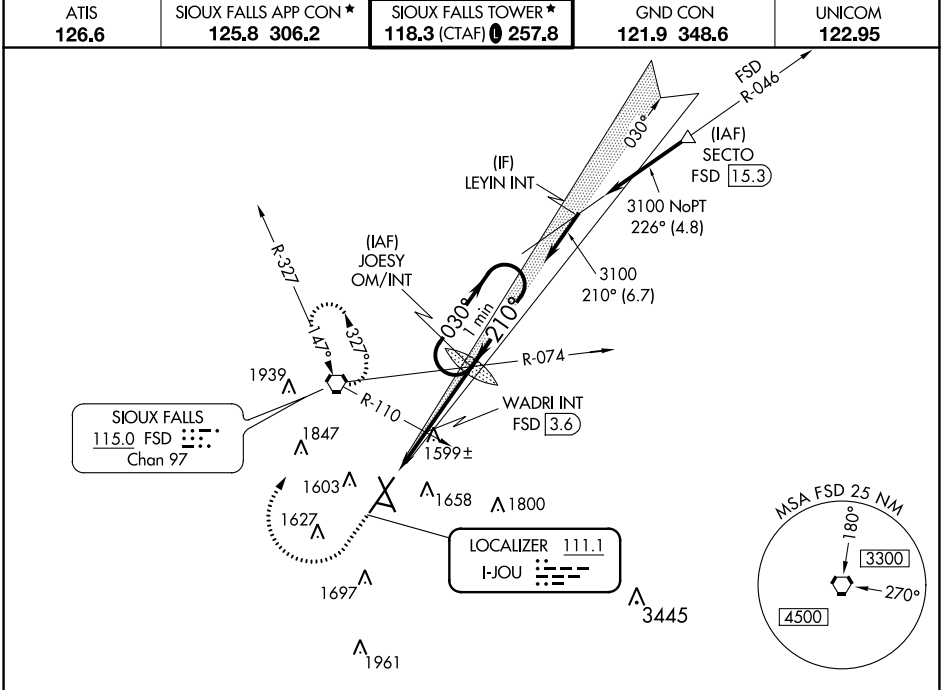


| | | | |
|---------------------------|------------------------|-----------------------------|---|
| LOC I-JOU 111.1 | APP CRS 210° | Rwy Idg TDZE Apt Elev | 8999 1430 1430 |
|---------------------------|------------------------|-----------------------------|---|

ILS or LOC RWY 21

JOE FOSS FLD (FSD)

| | | |
|----------|---|--|
| | For inoperative MALSRR increase S-ILS all Cats visibility to 3/4 mile, increase S-LOC 21 Cat C/D visibility to 1 1/8 mile. When using WADRI FIX minimums, increase S-LOC 21 Cat C/D visibility to 1 mile. | MISSED APPROACH: Climb to 3400 then right turn direct FSD VORTAC and hold. |
| | ATIS: 126.6 SIOUX FALLS APP CON: 125.8 306.2 SIOUX FALLS TOWER: 118.3 (CTAF) 0 257.8 GND CON: 121.9 348.6 UNICOM: 122.95 | |



| CATEGORY | A | B | C | D |
|--------------------|-----------------------|---------------|-----------------|-----------------|
| S-ILS 21 | 1630/18 200 (200-1/2) | | | |
| S-LOC 21 | 2100/24 | 670 (700-1/2) | 2100-1 1/2 | 670 (700-1 1/2) |
| C CIRCLING | 2100-1 | 670 (700-1) | 2100-1 3/4 | 2200-2 1/2 |
| WADRI FIX MINIMUMS | | | | |
| S-LOC 21 | 1800/24 | 370 (400-1/2) | 1800/35 | 370 (400-3/8) |
| C CIRCLING | 1960-1 | 1980-1 | 2060-1 3/4 | 2200-2 1/2 |
| | 530 (600-1) | 550 (600-1) | 630 (700-1 3/4) | 770 (800-2 1/2) |

NC-1, 08 AUG 2024 to 05 SEP 2024

NC-1, 08 AUG 2024 to 05 SEP 2024