

RNAV (GPS) RWY 9

JOE FOSS FLD (FSD)

APP CRS 098°	Rwy Idg TDZE 1424 Apt Elev 1430
------------------------	-----------------------------------------------------

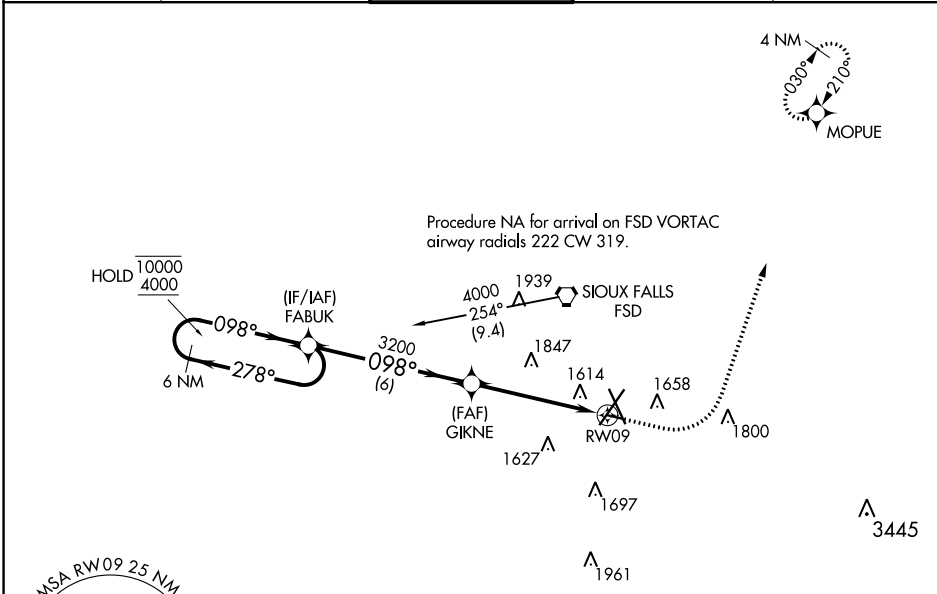
RNP APCH - GPS.

ASR Rwy 9 helicopter visibility reduction below 3/4 SM NA.

ASR -31°C

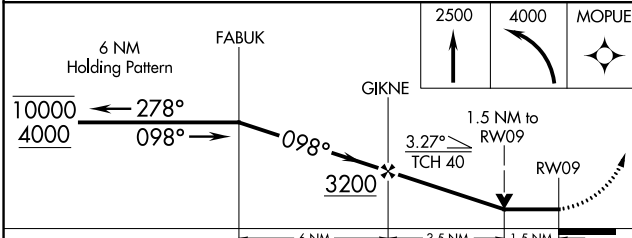
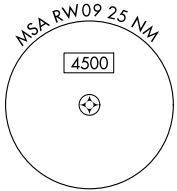
MISSED APPROACH: Climb to 2500 then climbing left turn to 4000 direct MOPUE and hold.

ATIS 126.6	SIoux FALLS APP CON* 125.8 306.2	SIoux FALLS TOWER* 118.3 (CTAF) 257.8	GND CON 121.9 348.6	UNICOM 122.95
----------------------	--------------------------------------------	-------------------------------------------------	-------------------------------	-------------------------

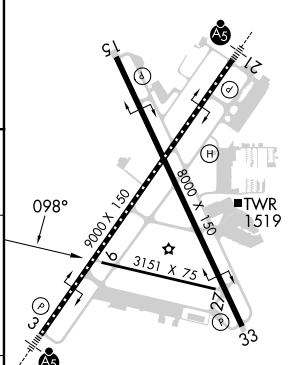


NC-1, 08 AUG 2024 to 05 SEP 2024

NC-1, 08 AUG 2024 to 05 SEP 2024



ELEV 1430	TDZE 1424
-----------	-----------



CATEGORY	A	B	C	D
LNAV MDA	2000-1	576 (600-1)		NA
CIRCLING	2000-1	570 (600-1)		NA

TDZ/CL Rwy 21

MRL Rwy 9-27

REIL Rws 15 and 33

HIRL Rws 3-21 and 15-33