

WENDOVER, UTAH

AL-445 (FAA)

24025

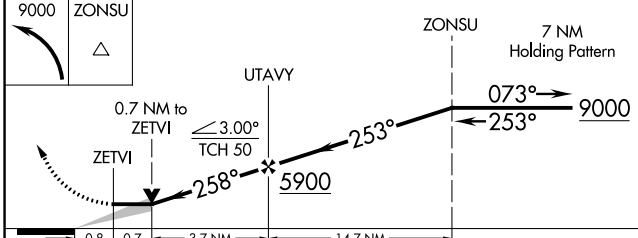
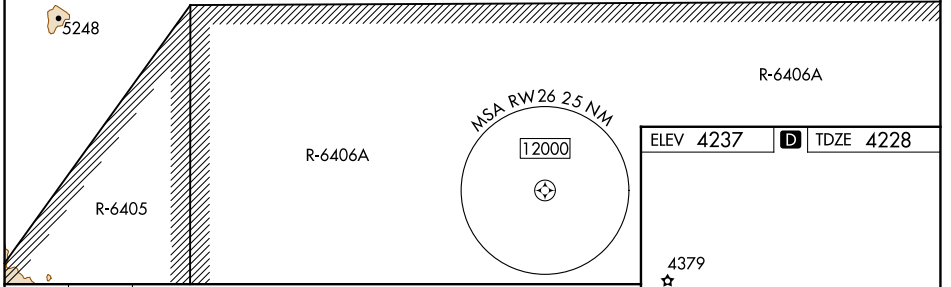
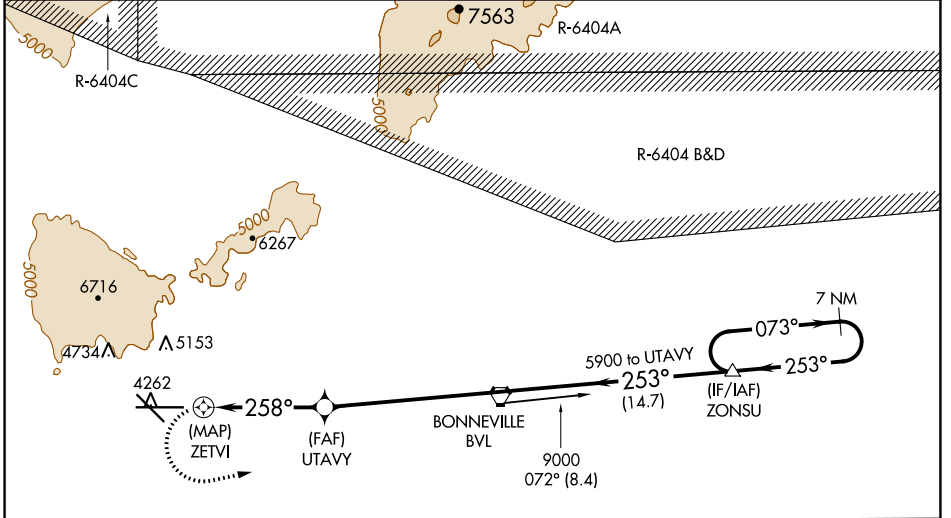
APP CRS	Rwy Idg	10002
258°	TDZE	4228
	Apt Elev	4237

RNAV (GPS) RWY 26

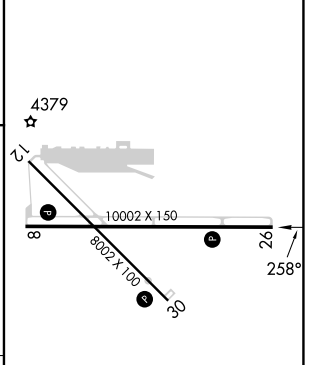
WENDOVER (ENV)

NA MISSED APPROACH: Climbing left turn to 9000 direct ZONSU and hold, continue climb-in-hold to 9000.	Circling NA north of Rwy 8-26. DME/DME RNP-0.3 NA.
--	---

AWOS-3PT 120.55	SALT LAKE CENTER 128.55 269.175	UNICOM 122.8 (CTAF)
---------------------------	---	-------------------------------



ELEV 4237	D TDZE 4228
-----------	--------------------



CATEGORY	A	B	C	D	E
LNVA MDA	4740-1	512 (600-1)	4740-1 ³ / ₈	512 (600-1 ¹ / ₈)	
C CIRCLING	4740-1 ¹ / ₄	503 (600-1 ¹ / ₄)	4860-1 ³ / ₄ 623 (700-1 ³ / ₄)	5080-2 ³ / ₄ 843 (900-2 ³ / ₄)	5700-3 1463 (1500-3)

REIL Rwy 8, 12, 26 and 30 **1**
 MIRL Rwy 8-26 and 12-30 **1**

SW-4, 08 AUG 2024 to 05 SEP 2024

SW-4, 08 AUG 2024 to 05 SEP 2024

WENDOVER, UTAH
Amdt 1A 02JAN20

40°43'N-114°02'W

WENDOVER (ENV)

RNAV (GPS) RWY 26