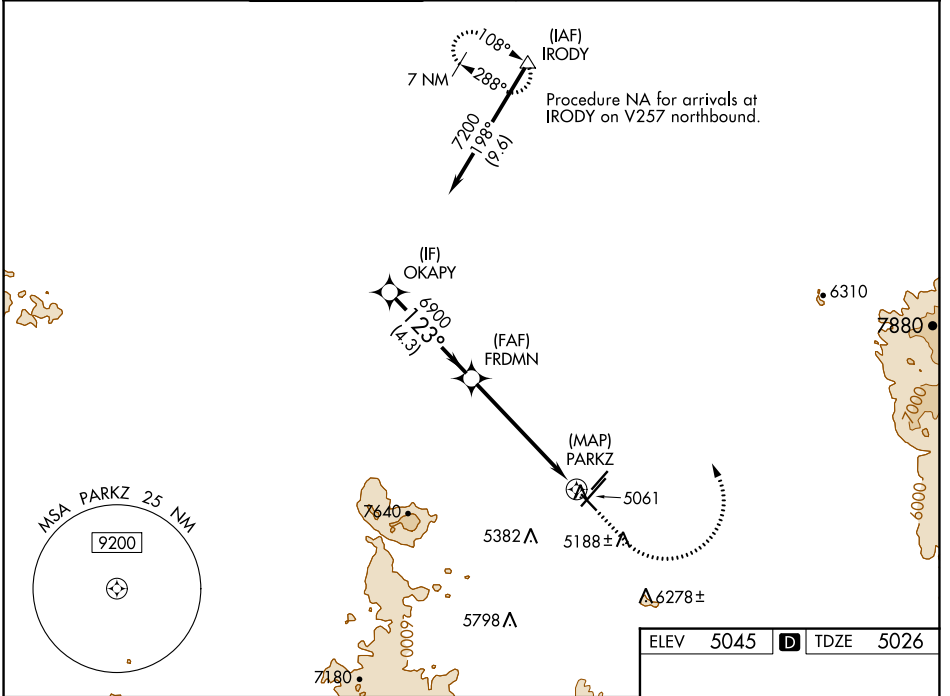


WAAS CH <b>49235</b> <b>W12A</b>	APP CRS <b>123°</b>	Rwy Idg TDZE Apt Elev	<b>4258</b> <b>5026</b> <b>5045</b>
--	------------------------	-----------------------------	---

# RNAV (GPS) RWY 12

PRESCOTT RGNL-ERNEST A LOVE FLD (PRC)

RNP APCH.				MISSED APPROACH: Climb to 5500 then climbing left turn to 9000 direct IRODY and hold, continue climb-in-hold to 9000.		
<p>▼ For uncompensated Baro-VNAV systems, LNAV/VNAV NA below -11°C or above 49°C. Rwy 12 helicopter visibility reduction below 1 SM NA. Straight-in Rwy 12 NA at night, Circling Rwy 12, 3L, 30 NA at night.</p>						
ATIS <b>127.2</b>	PHOENIX APP CON <b>133.575 281.55</b>	PRESCOTT TOWER * <b>125.3 (CTAF) 257.9</b>	GND CON <b>121.7</b>	CLNC DEL <b>119.25</b>	<b>128.75</b> (12-30) <b>125.3 (CTAF)</b> (3R-21L)	UNICOM <b>122.95</b>

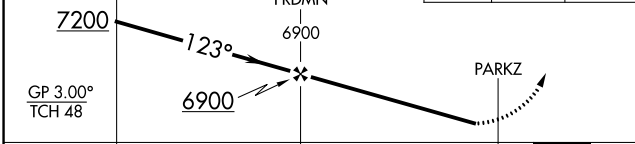


SW-4, 08 AUG 2024 to 05 SEP 2024

SW-4, 08 AUG 2024 to 05 SEP 2024

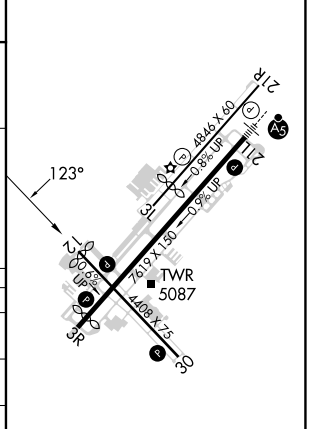
VGSI and RNAV glidepath not coincident (VGSI Angle 4.24/TCH 52).

OKAPY	FRDMN	IRODY
7200	6900	5500 / 9000



ELEV 5045	TDZE 5026
-----------	-----------

CATEGORY	A	B	C	D
LPV DA	5276-1		250 (300-1)	
LNAV/VNAV DA	5432-1 3/8		406 (400-1 3/8)	
LNAV MDA	5520-1	494 (500-1)	5520-1 3/8	494 (500-1 3/8)
CIRCLING	5520-1 475 (500-1)	5760-1 715 (800-1)	6080-3 1035 (1100-3)	6680-3 1635 (1700-3)



MIRL Rwy 3L-21R and 3R-21L  
MIRL Rwy 12-30  
REIL Rwy 3R, 12, and 30