

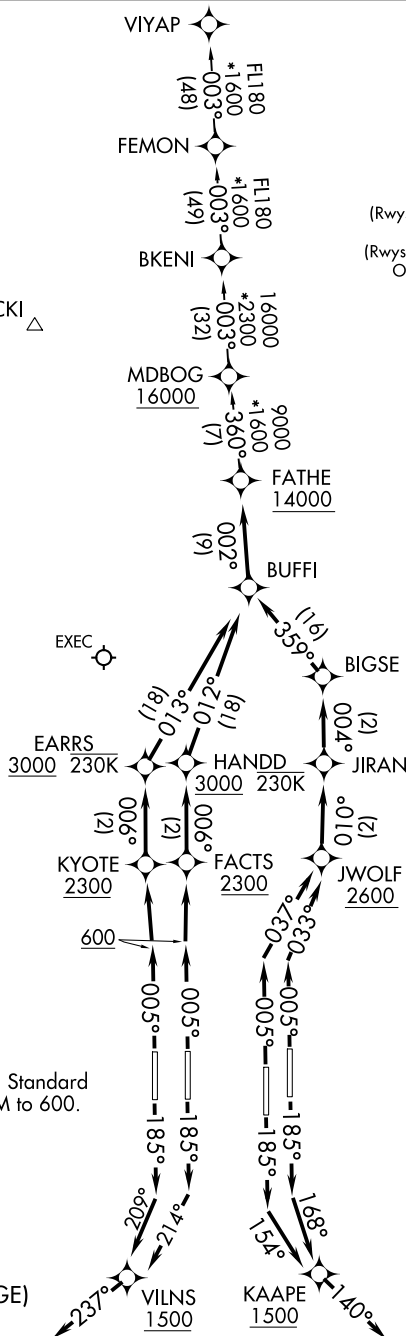
FATHE THREE DEPARTURE (RNAV)

TOP ALTITUDE: Rwys 17L/R, 18L/R: 7000 Rwys 35L/R, 36L/R: 16000
RNAV 1 - DME/DME/IRU or GPS.
RADAR required.

- D-ATIS DEP 120.525
- CLNC DEL 134.7 341.7
- CPDLC
- GND CON 126.4 (East)
- 121.8 (West)
- ORLANDO TOWER 118.45 253.5
- (Rwys 17L-35R, 17R-35L) 124.3 253.5
- (Rwys 18L-36R, 18R-36L) 124.8 307.0
- ORLANDO DEP CON 124.8 307.0

MICKI Δ

NOTE: Jet aircraft only.



TAKEOFF MINIMUMS

Rwys 17L/R, 18L/R, 35L/R, 36L/R: Standard with minimum climb of 500' per NM to 600.

(NARRATIVE ON FOLLOWING PAGE)

NOTE: Chart not to scale.

FATHE THREE DEPARTURE (RNAV)

SE-3, 08 AUG 2024 to 05 SEP 2024

SE-3, 08 AUG 2024 to 05 SEP 2024

FATHE THREE DEPARTURE (RNAV)



DEPARTURE ROUTE DESCRIPTION SEE ADDITIONAL REQUIREMENTS ON AAUP

TAKEOFF RUNWAY 17L: Climb on heading 185° to intercept course 168° to cross KAAPE at or above 1500, then on track 140°, for vectors to BUFFI, thence

TAKEOFF RUNWAY 17R: Climb on heading 185° to intercept course 154° to cross KAAPE at or above 1500, then on track 140°, for vectors to BUFFI, thence

TAKEOFF RUNWAY 18L: Climb on heading 185° to intercept course 214° to cross VILNS at or above 1500, then on track 237°, for vectors to BUFFI, thence

TAKEOFF RUNWAY 18R: Climb on heading 185° to intercept course 209° to cross VILNS at or above 1500, then on track 237°, for vectors to BUFFI, thence

TAKEOFF RUNWAY 35L: Climb on heading 005° to intercept course 037° to cross JWOLF at or above 2600, then on track 010° to JIRAN, then on track 004° to BIGSE, then on track 359° to BUFFI, thence

TAKEOFF RUNWAY 35R: Climb on heading 005° to intercept course 033° to cross JWOLF at or above 2600, then on track 010° to JIRAN at or above 3000, then on track 004° to BIGSE, then on track 359° to BUFFI, thence

TAKEOFF RUNWAY 36L: Climb on heading 005° to 600, then direct KYOTE at or above 2300, then on track 006° to cross EARRS at or above 3000 and at or below 230K, then on track 013° to BUFFI, thence

TAKEOFF RUNWAY 36R: Climb on heading 005° to 600, then direct FACTS at or above 2300, then on track 006° to cross HANDD at or above 3000 and at or below 230K, then on track 012° to BUFFI, thence

. . . . on track 002° to cross FATHE at or above 14000, then on assigned transition, RUNWAY 17L/17R, 18L/18R maintain 7000, RUNWAY 35L/35R, 36L/36R maintain 16000, expect filed altitude 10 minutes after departure.

ALL AIRCRAFT: ATC climb gradients: If unable to accept climb rates advise ATC prior to taxi. RUNWAY 35R: 566 FT/NM to 2300, RUNWAY 36L: 637 FT/NM to 2300, RUNWAY 36R: 621 FT/NM to 2300.

VIYAP TRANSITION (FATHE3.VIYAP)

SE-3: 08 AUG 2024 to 05 SEP 2024

SE-3: 08 AUG 2024 to 05 SEP 2024