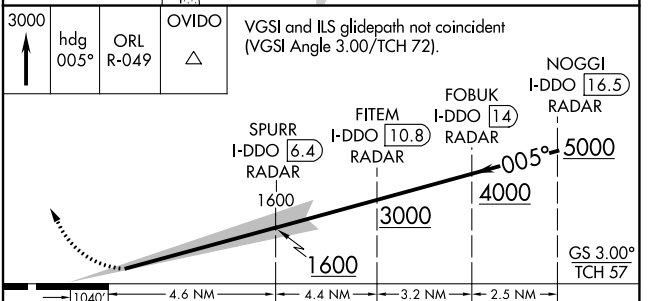
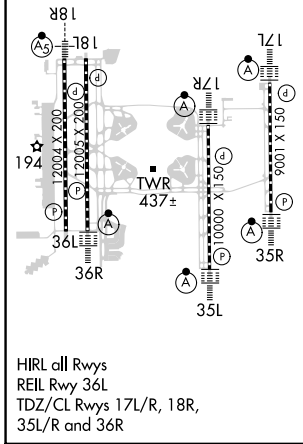
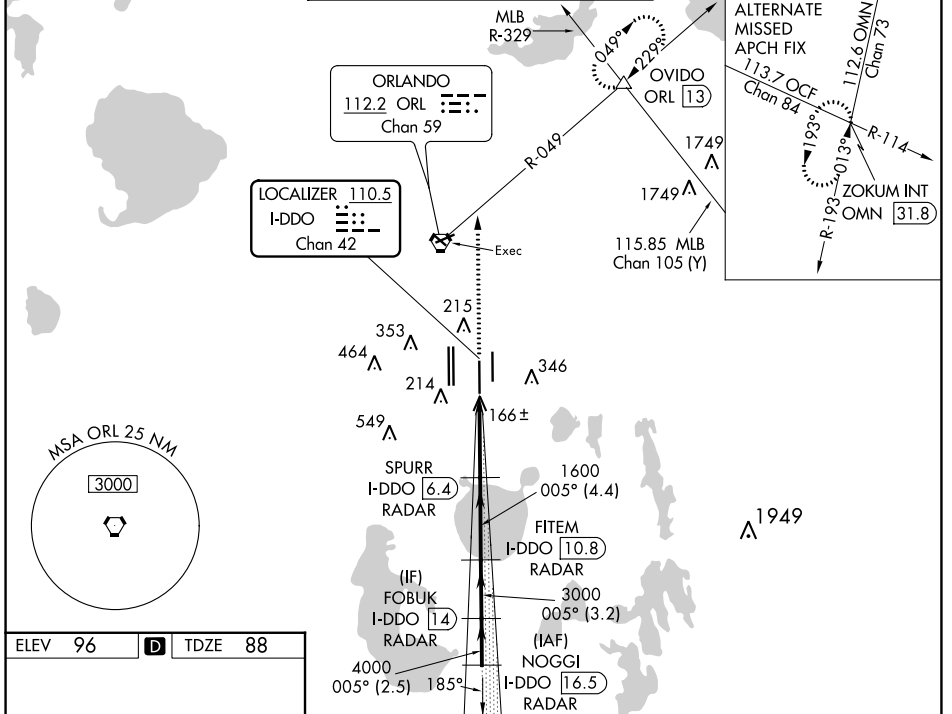


LOC/DME I- <b>DDO</b> <b>110.5</b> Chan <b>42</b>	APP CRS <b>005°</b>	Rwy Idg TDZE <b>88</b> Apt Elev <b>96</b>	<b>10000</b>
---	------------------------	---	--------------

# ILS RWY 35L (CAT II & III)

ORLANDO INTL (MCO)

RADAR required for procedure entry. DME or RADAR required.		ALSF-2 	MISSED APPROACH: Climb to 3000 on heading 005° and ORL VORTAC R-049 to OVIDO INT/ORL 13 DME and hold.			
<p><b>▲</b> Bright lights on highway midway between Rwy 35L and Rwy 35R may be mistaken for runway lights. Simultaneous approach authorized. When using alternate missed approach, simultaneous approach NA.</p>						
D-ATIS ARR <b>121.25</b> DEP <b>120.525</b>	ORLANDO APP CON <b>124.8 307.0</b>	ORLANDO TOWER <b>118.45 253.5</b> (Rwys 17L-35R, 17R-35L) <b>124.3 253.5</b> (Rwys 18L-36R, 18R-36L)		GND CON (East) <b>126.4</b> (West) <b>121.8</b>	CLNC DEL <b>134.7</b> <b>341.7</b>	CPDLC



3000	hdg 005°	ORL R-049	OVIDO	△	VGSI and ILS glidepath not coincident (VGSI Angle 3.00/TCH 72).
		SPURR I-DDO [6.4] RADAR	FITEM I-DDO [10.8] RADAR	FOBUK I-DDO [14] RADAR	NOGGI I-DDO [16.5] RADAR
		1600	3000	4000	5000
		4.6 NM	4.4 NM	3.2 NM	2.5 NM
CATEGORY	A	B	C	D	
S-ILS 35L	CAT II RA 106/12 100 DA 188				
S-ILS 35L	CAT III RVR 06				

**CATEGORY II & III ILS - SPECIAL AIRCREW & AIRCRAFT CERTIFICATION REQUIRED**

SE-3, 08 AUG 2024 to 05 SEP 2024

SE-3, 08 AUG 2024 to 05 SEP 2024