

LOC/DME I-OJP <b>110.7</b> Chan <b>44</b>	APP CRS <b>005°</b>	Rwy Idg <b>11601</b> TDZE <b>92</b> Apt Elev <b>96</b>
---	------------------------	--

# ILS RWY 36R (SA CAT I)

ORLANDO INTL (MCO)

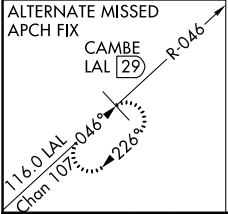
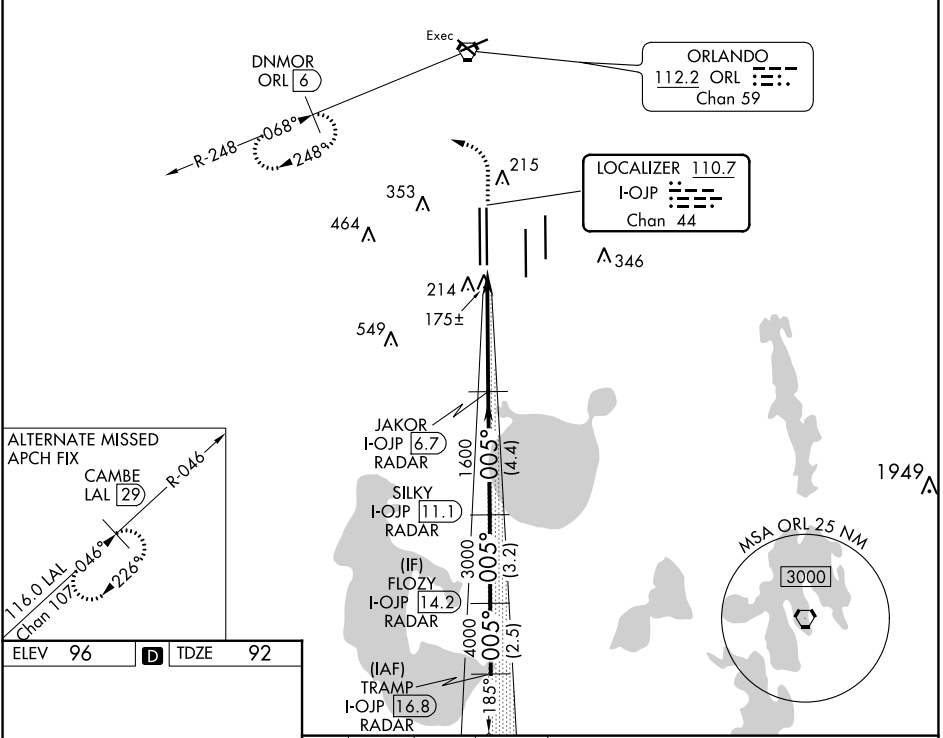
RADAR required for procedure entry. DME or RADAR required.

Simultaneous approach authorized. Requires specific OPSPEC, MSPEC or LOA approval.

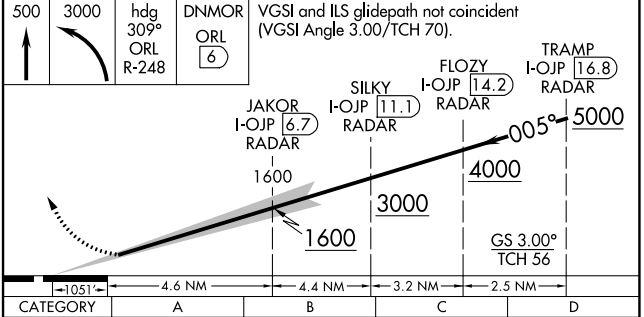
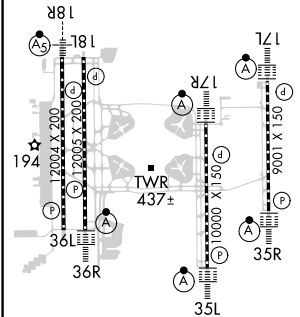
ALSF-2

MISSED APPROACH: Climb to 500 then climbing left turn to 3000 on heading 309° and ORL R-248 to DNMOR/ORL 6 DME and hold, continue climb-in-hold to 3000.

D-ATIS ARR <b>121.25</b> DEP <b>120.525</b>	ORLANDO APP CON <b>124.8 307.0</b>	ORLANDO TOWER <b>118.45 253.5</b> (Rwys 17L-35R, 17R-35L) <b>124.3 253.5</b> (Rwys 18L-36R, 18R-36L)	GND CON <b>126.4</b> (East) <b>121.8</b> (West)	CLNC DEL <b>134.7</b> <b>341.7</b>	CPDLC
---	---------------------------------------	--	---	--	-------



ELEV 96	<b>D</b>	TDZE 92
---------	----------	---------



CATEGORY	A	B	C	D
S-ILS 36R	RA 158/14 150 DA 242			

**SA CATEGORY I ILS - SPECIAL AIRCREW & AIRCRAFT CERTIFICATION REQUIRED**

HIRL all Rwys  
REIL Rwy 36L  
TDZ/CL Rwys 17L/R,  
18R, 35L/R, and 36R

SE-3, 08 AUG 2024 to 05 SEP 2024

SE-3, 08 AUG 2024 to 05 SEP 2024