

ORLANDO APP CON  
134.05 339.8  
ISM ATIS  
128.775  
LEE ATIS  
134.325  
MCO D-ATIS ARR  
121.25  
ORL ATIS  
127.25  
SFB ATIS  
125.975  
TIX ATIS  
120.625

OCALA  
113.7 OCF  
Chan 84

ORLANDO  
112.2 ORL  
Chan 59

ORLANDO SANFORD INTL  
EXEC  
SPACE COAST RGNL  
ORLANDO INTL  
MERRITT ISLAND

**ANDRO  
TURBOJET VERTICAL  
NAVIGATION  
PLANNING INFORMATION**

Orlando Intl Landing South: Expect clearance to cross at 13,000'.  
Orlando Intl Landing North: Expect clearance to cross at 13,000' and 250 KTS.

**MOANS  
TURBOJET VERTICAL  
NAVIGATION  
PLANNING INFORMATION**

Orlando Intl Landing South: Expect clearance to cross at 13,000'.  
Orlando Intl Landing North: Expect clearance to cross at 10,000' and 250 KTS.

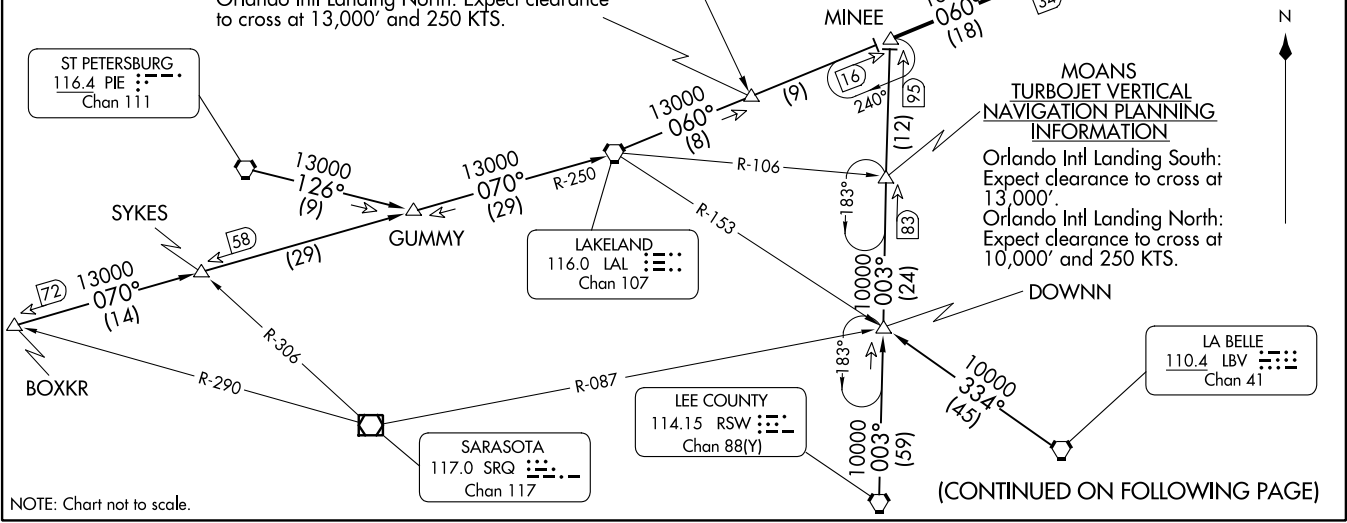
ST PETERSBURG  
116.4 PIE  
Chan 111

LAKELAND  
116.0 LAL  
Chan 107

LA BELLE  
110.4 LBV  
Chan 41

SARASOTA  
117.0 SRQ  
Chan 117

LEE COUNTY  
114.15 RSW  
Chan 88(Y)



NOTE: Chart not to scale.

(CONTINUED ON FOLLOWING PAGE)

# MINEE FIVE ARRIVAL (MINEE.MINEE5)

ORLANDO, FLORIDA

## ARRIVAL ROUTE DESCRIPTION

BOXKR TRANSITION (BOXKR.MINEE5): From over BOXKR INT via LAL R-250 to LAL VORTAC, then via LAL R-060 to MINEE INT. Thence. . . .

LA BELLE TRANSITION (LBV.MINEE5): From over LBV VORTAC via LBV R-334 to DOWNN INT, then via RSW R-003 to MINEE INT. Thence. . . .

LEE COUNTY TRANSITION (RSW.MINEE5): From over RSW VORTAC via RSW R-003 to MINEE INT. Thence. . . .

ST. PETERSBURG TRANSITION (PIE.MINEE5): From over PIE VORTAC via PIE R-126 to GUMMY INT, then via LAL R-250 to LAL VORTAC, then via LAL R-060 to MINEE INT. Thence. . . .

. . . . From over MINEE INT via LAL R-060 to UNITY INT, then via ORL R-200 to ORL VORTAC.

LEESBURG INTL: Expect radar vectors to airport after UNITY INT.

ALL OTHER AIRPORTS: Expect radar vectors to final approach course after UNITY INT.

SE-3, 08 AUG 2024 to 05 SEP 2024

SE-3, 08 AUG 2024 to 05 SEP 2024