

(PRIC3.PRIC3) 03NOV22

PRIC3 THREE ARRIVAL (RNAV) Transition Routes

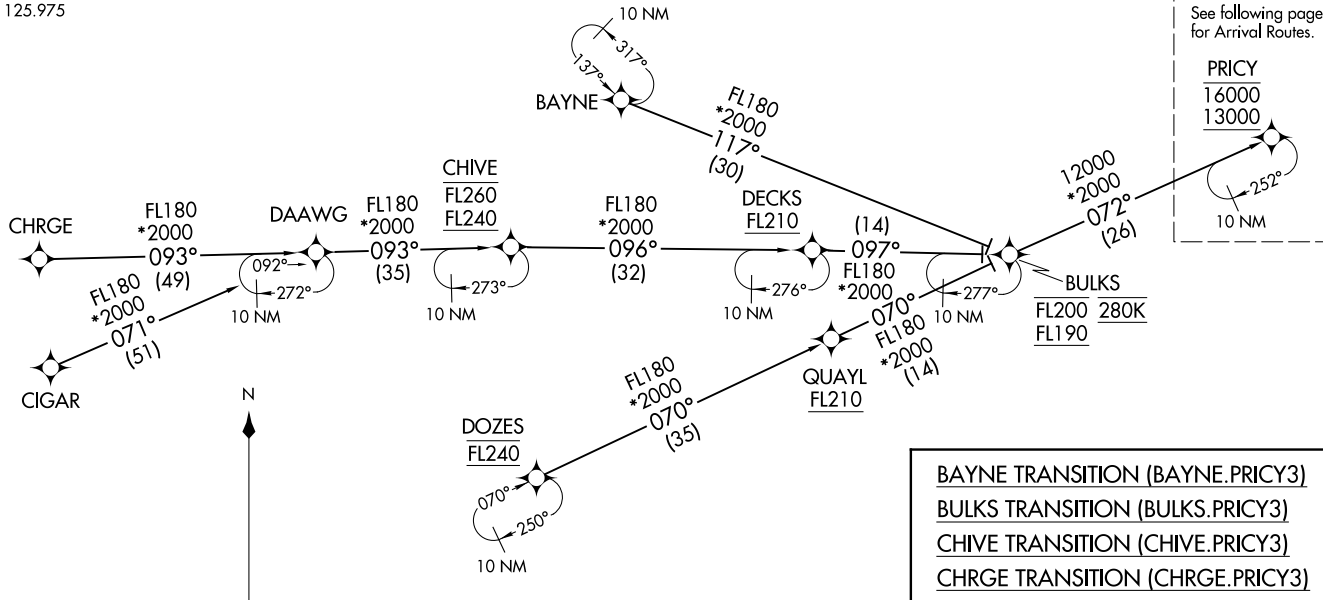
ORLANDO, FLORIDA

ORLANDO APP CON
134.05 339.8
ISM ATIS
128.775
LEE ATIS
134.325
MCO D-ATIS ARR
121.25
MLB ATIS
132.55
ORL ATIS
127.25
SFB ATIS
125.975

NOTE: Jet aircraft only.
NOTE: Do not file BULKS, CHIVE or DOZES Transitions - to be assigned by ATC.
NOTE: For vertical navigation planning, landing south, select Rwy 18R, landing north, select Rwy 36L.

RNAV 1 - DME/DME/IRU or GPS.
CHRG Transition, RNAV 1-GPS.
CIGAR Transition, RNAV 1-GPS.

RADAR required.



NOTE: Chart not to scale.

(CONTINUED ON FOLLOWING PAGE)

- BAYNE TRANSITION (BAYNE.PRIC3)
- BULKS TRANSITION (BULKS.PRIC3)
- CHIVE TRANSITION (CHIVE.PRIC3)
- CHRG TRANSITION (CHRG.PRIC3)
- CIGAR TRANSITION (CIGAR.PRIC3)
- DOZES TRANSITION (DOZES.PRIC3)

(PRIC3.PRIC3) 22307

AL-571 (FAA)
PRIC3 THREE ARRIVAL (RNAV) Transition Routes

ORLANDO, FLORIDA

PRICY THREE ARRIVAL (RNAV) Arrival Routes

ORLANDO, FLORIDA

ORLANDO APP CON
 134.05 339.8
 ISM ATIS
 128.775
 LEE ATIS
 134.325
 MCO D-ATIS ARR
 121.25
 MLB ATIS
 132.55
 ORL ATIS
 127.25
 SFB ATIS
 125.975

LEESBURG INTL

LYENS
5000 210K

Ldg KMCO Rwy 17L/R, 18L/R

ORLANDO SANFORD INTL

HAMMY

EXEC

DVOLA

RNAV 1 - DME/DME/IRU or GPS.

RADAR required.

GIRAF
8000 220K

ORLANDO INTL

NOTE: Jet aircraft only.

NOTE: For vertical navigation planning, landing south, select Rwy 18R, landing north, select Rwy 36L.

ARHIP

KISSIMMEE GATEWAY

OTKEE
11000 250K

Ldg KLEE/KSFB/KISM/KORL/KMLB

TAYYE
12000 250K
10000

EXBAN

MELBOURNE ORLANDO INTL

PRICY
16000
13000

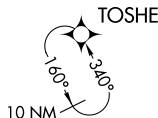
BOCCCE

JUMBA

AMADS
9000

LORRA
7000 210K

Ldg KMCO Rwy 35L/R, 36L/R



NOTE: Chart not to scale.

(NARRATIVE ON FOLLOWING PAGE)

SE-3, 08 AUG 2024 to 05 SEP 2024

SE-3, 08 AUG 2024 to 05 SEP 2024

PRICY THREE ARRIVAL (RNAV) Arrival Routes

ORLANDO, FLORIDA

ARRIVAL ROUTE DESCRIPTION

KMCO: From PRICY on track 071° to BOCCE, then on track 068° to JUMBA.

LANDING KMCO RUNWAYS 17L/R, 18L/R: From JUMBA on track 068° to cross TAYYE between 10000 and 12000 and at 250K, then on track 060° to ARHIP, then on track 006° to cross GIRAF at or above 8000 and at 220K, then on track 006° to DVOLA, then on track 006° to cross LYENS at 5000 and at 210K, then on track 006°. Expect RADAR vectors to final approach course.

LANDING KMCO RUNWAYS 35L/R, 36L/R: From JUMBA on track 104° to cross AMADS at or below 9000, then on track 104° to cross LORRA at 7000 and at 210K, then on heading 096°. Expect RADAR vectors to final approach course.

LANDING KLEE/KSFB/KISM/KMLB/KORL: From PRICY on track 071° to BOCCE, then on track 056° to cross OTKEE at 11000 and at 250K, then on track 056°. Expect RADAR vectors to final approach course.

SE-3, 08 AUG 2024 to 05 SEP 2024

SE-3, 08 AUG 2024 to 05 SEP 2024